

**LMX1A Antibody (C-Terminus)**  
**Rabbit Polyclonal Antibody**  
**Catalog # ALS15674****Specification**

---

**LMX1A Antibody (C-Terminus) - Product Information**

Application	IHC, IF, WB
Primary Accession	<a href="#">Q8TE12</a>
Reactivity	Human
Host	Rabbit
Clonality	Polyclonal
Calculated MW	43kDa KDa

**LMX1A Antibody (C-Terminus) - Additional Information****Gene ID** 4009**Other Names**

LIM homeobox transcription factor 1-alpha, LIM/homeobox protein 1.1, LMX-1.1, LIM/homeobox protein LMX1A, LMX1A

**Target/Specificity**

Human LMX1A. At least two isoforms are known to exist. This antibody is predicted to not cross-react with LMX1B.

**Reconstitution & Storage**

Long term: -20°C; Short term: +4°C. Avoid repeat freeze-thaw cycles.

**Precautions**

LMX1A Antibody (C-Terminus) is for research use only and not for use in diagnostic or therapeutic procedures.

**LMX1A Antibody (C-Terminus) - Protein Information****Name** LMX1A**Function**

Acts as a transcriptional activator by binding to an A/T-rich sequence, the FLAT element, in the insulin gene promoter. Required for development of the roof plate and, in turn, for specification of dorsal cell fates in the CNS and developing vertebrae (By similarity).

**Cellular Location**

Nucleus {ECO:0000255|PROSITE-ProRule:PRU00108}.

**Tissue Location**

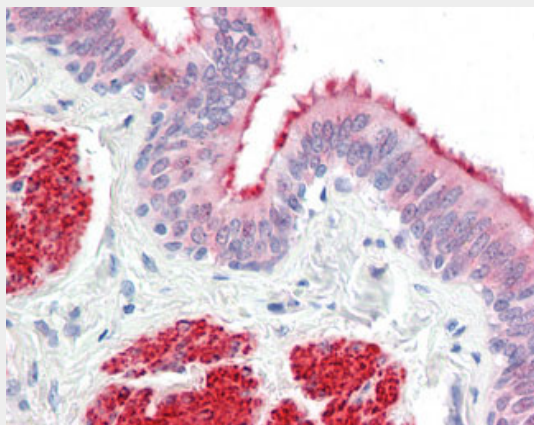
Isoform 1 is expressed in many tissues. Not found in heart, liver, spleen and testis. Relatively highly expressed in fetal brain. Isoform LMX1A-4AB is expressed in testis

## **LMX1A Antibody (C-Terminus) - Protocols**

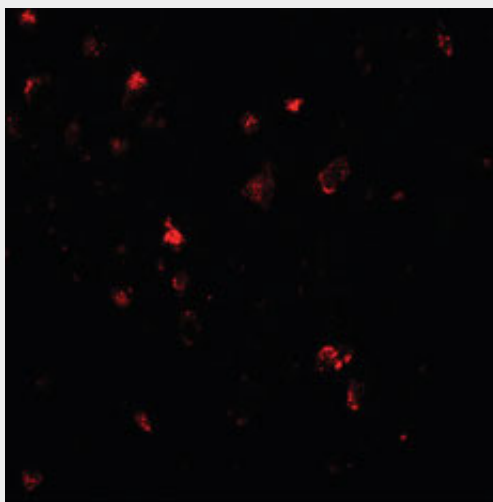
Provided below are standard protocols that you may find useful for product applications.

- [Western Blot](#)
- [Blocking Peptides](#)
- [Dot Blot](#)
- [Immunohistochemistry](#)
- [Immunofluorescence](#)
- [Immunoprecipitation](#)
- [Flow Cytometry](#)
- [Cell Culture](#)

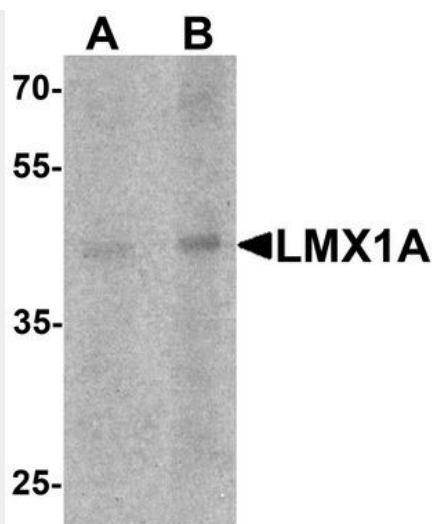
## **LMX1A Antibody (C-Terminus) - Images**



Anti-LMX1A antibody IHC staining of human lung, bronchiole.



Immunofluorescence of LMX1A in human brain tissue with LMX1A antibody at 20 ug/ml.



Western blot analysis of LMX1A in rat brain tissue lysate with LMX1A antibody at (A) 1 and (B) 2...

#### **LMX1A Antibody (C-Terminus) - Background**

Acts as a transcriptional activator by binding to an A/T-rich sequence, the FLAT element, in the insulin gene promoter. Required for development of the roof plate and, in turn, for specification of dorsal cell fates in the CNS and developing vertebrae (By similarity).

#### **LMX1A Antibody (C-Terminus) - References**

- Thameem F.,et al.Gene 290:217-225(2002).
- Ota T.,et al.Nat. Genet. 36:40-45(2004).
- Gregory S.G.,et al.Nature 441:315-321(2006).
- Mural R.J.,et al.Submitted (JUL-2005) to the EMBL/GenBank/DDBJ databases.