

DCX / Doublecortin Antibody (clone 2G5)
Mouse Monoclonal Antibody
Catalog # ALS15721**Specification**

DCX / Doublecortin Antibody (clone 2G5) - Product Information

Application	IHC, IF
Primary Accession	O43602
Reactivity	Human
Host	Mouse
Clonality	Monoclonal
Calculated MW	49kDa KDa

DCX / Doublecortin Antibody (clone 2G5) - Additional Information**Gene ID** 1641**Other Names**

Neuronal migration protein doublecortin, Dublin, Lissencephalin-X, Lis-X, DCX, DBCN, LISX

Target/Specificity

Human DCX / Doublecortin

Reconstitution & Storage

Long term: -20°C; Short term: +4°C; Avoid freeze-thaw cycles.

Precautions

DCX / Doublecortin Antibody (clone 2G5) is for research use only and not for use in diagnostic or therapeutic procedures.

DCX / Doublecortin Antibody (clone 2G5) - Protein Information**Name** DCX**Synonyms** DBCN, LISX**Function**

Microtubule-associated protein required for initial steps of neuronal dispersion and cortex lamination during cerebral cortex development. May act by competing with the putative neuronal protein kinase DCLK1 in binding to a target protein. May in that way participate in a signaling pathway that is crucial for neuronal interaction before and during migration, possibly as part of a calcium ion-dependent signal transduction pathway. May be part with PFAH1B1/LIS-1 of overlapping, but distinct, signaling pathways that promote neuronal migration.

Cellular Location

Cytoplasm. Cell projection, neuron projection {ECO:0000250|UniProtKB:Q9ESI7}. Note=Localizes at neurite tips. {ECO:0000250|UniProtKB:Q9ESI7}

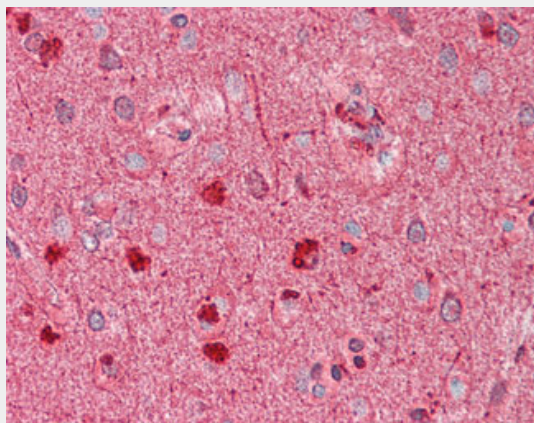
Tissue Location

Highly expressed in neuronal cells of fetal brain (in the majority of cells of the cortical plate, intermediate zone and ventricular zone), but not expressed in other fetal tissues. In the adult, highly expressed in the brain frontal lobe, but very low expression in other regions of brain, and not detected in heart, placenta, lung, liver, skeletal muscles, kidney and pancreas

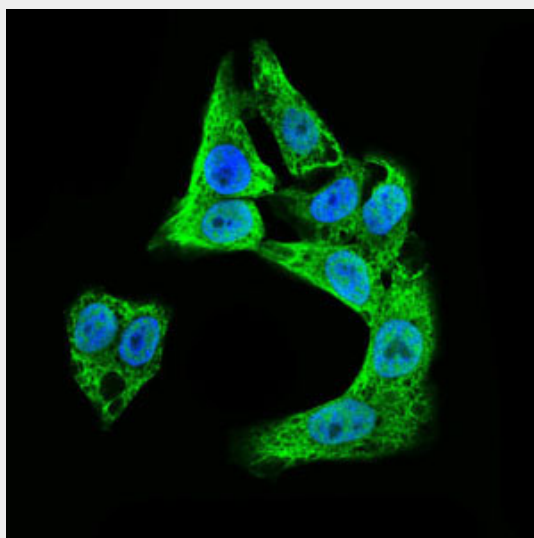
DCX / Doublecortin Antibody (clone 2G5) - Protocols

Provided below are standard protocols that you may find useful for product applications.

- [Western Blot](#)
- [Blocking Peptides](#)
- [Dot Blot](#)
- [Immunohistochemistry](#)
- [Immunofluorescence](#)
- [Immunoprecipitation](#)
- [Flow Cytometry](#)
- [Cell Culture](#)

DCX / Doublecortin Antibody (clone 2G5) - Images

Anti-DCX / Doublecortin antibody IHC staining of human brain, cortex.



Immunofluorescence of HepG2 cells using DCX mouse monoclonal antibody (green).

DCX / Doublecortin Antibody (clone 2G5) - Background

Microtubule-associated protein required for initial steps of neuronal dispersion and cortex lamination during cerebral cortex development. May act by competing with the putative neuronal protein kinase DCLK1 in binding to a target protein. May in that way participate in a signaling pathway that is crucial for neuronal interaction before and during migration, possibly as part of a calcium ion-dependent signal transduction pathway. May be part with PAFAH1B1/LIS-1 of overlapping, but distinct, signaling pathways that promote neuronal migration.

DCX / Doublecortin Antibody (clone 2G5) - References

Des Portes V., et al. Cell 92:51-61(1998).
Gleeson J.G., et al. Cell 92:63-72(1998).
Sossey-Alaoui K., et al. Submitted (JAN-1998) to the EMBL/GenBank/DDBJ databases.
Ross M.T., et al. Nature 434:325-337(2005).
Mural R.J., et al. Submitted (SEP-2005) to the EMBL/GenBank/DDBJ databases.