

**APOA1 / Apolipoprotein A 1 Antibody (clone AT1E12)**  
**Mouse Monoclonal Antibody**  
**Catalog # ALS15727****Specification**

---

**APOA1 / Apolipoprotein A 1 Antibody (clone AT1E12) - Product Information**

Application	WB
Primary Accession	<a href="#">P02647</a>
Reactivity	Human
Host	Mouse
Clonality	Monoclonal
Calculated MW	31kDa KDa

**APOA1 / Apolipoprotein A 1 Antibody (clone AT1E12) - Additional Information****Gene ID** 335**Other Names**

Apolipoprotein A-I, Apo-AI, ApoA-I, Apolipoprotein A1, Proapolipoprotein A-I, ProapoA-I, Truncated apolipoprotein A-I, Apolipoprotein A-I(1-242), APOA1

**Target/Specificity**

Human Apolipoprotein A1 / APOA1

**Reconstitution & Storage**

Can be stored at 4°C. For long term storage, aliquot and store at -20°C. Avoid repeated freezing and thawing cycles.

**Precautions**

APOA1 / Apolipoprotein A 1 Antibody (clone AT1E12) is for research use only and not for use in diagnostic or therapeutic procedures.

**APOA1 / Apolipoprotein A 1 Antibody (clone AT1E12) - Protein Information****Name** APOA1 ([HGNC:600](#))**Function**

Participates in the reverse transport of cholesterol from tissues to the liver for excretion by promoting cholesterol efflux from tissues and by acting as a cofactor for the lecithin cholesterol acyltransferase (LCAT). As part of the SPAP complex, activates spermatozoa motility.

**Cellular Location**

Secreted.

**Tissue Location**

Major protein of plasma HDL, also found in chylomicrons. Synthesized in the liver and small intestine. The oxidized form at Met-110 and Met-136 is increased in individuals with increased risk for coronary artery disease, such as in carrier of the eNOSa/b genotype and exposure to cigarette

smoking. It is also present in increased levels in aortic lesions relative to native ApoA-I and increased levels are seen with increasing severity of disease

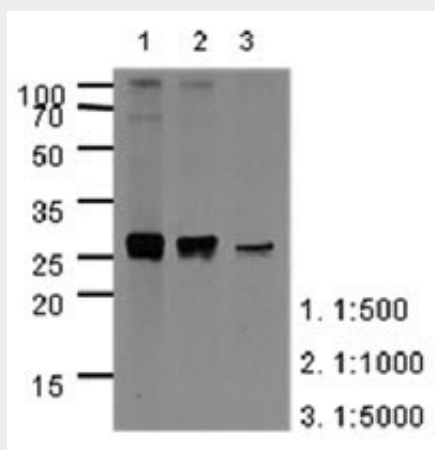
**Volume**  
50 µl

### **APOA1 / Apolipoprotein A 1 Antibody (clone AT1E12) - Protocols**

Provided below are standard protocols that you may find useful for product applications.

- [Western Blot](#)
- [Blocking Peptides](#)
- [Dot Blot](#)
- [Immunohistochemistry](#)
- [Immunofluorescence](#)
- [Immunoprecipitation](#)
- [Flow Cytometry](#)
- [Cell Culture](#)

### **APOA1 / Apolipoprotein A 1 Antibody (clone AT1E12) - Images**



Western Blot: The extracts of HepG2 (40 ug) were resolved by SDS-PAGE, transferred to PVDF...

### **APOA1 / Apolipoprotein A 1 Antibody (clone AT1E12) - Background**

Participates in the reverse transport of cholesterol from tissues to the liver for excretion by promoting cholesterol efflux from tissues and by acting as a cofactor for the lecithin cholesterol acyltransferase (LCAT). As part of the SPAP complex, activates spermatozoa motility.

### **APOA1 / Apolipoprotein A 1 Antibody (clone AT1E12) - References**

Shoulders C.C.,et al.Nucleic Acids Res. 11:2827-2837(1983).  
Cheung P.,et al.Nucleic Acids Res. 11:3703-3715(1983).  
Karathanasis S.K.,et al.Proc. Natl. Acad. Sci. U.S.A. 80:6147-6151(1983).  
Seilhamer J.J.,et al.DNA 3:309-317(1984).  
Sharpe C.R.,et al.Nucleic Acids Res. 12:3917-3932(1984).