

**MB / Myoglobin Antibody (clone AT6E10)**  
**Mouse Monoclonal Antibody**  
**Catalog # ALS15728****Specification**

---

**MB / Myoglobin Antibody (clone AT6E10) - Product Information**

Application	WB, IHC
Primary Accession	<a href="#">P02144</a>
Reactivity	Human, Mouse
Host	Mouse
Clonality	Monoclonal
Calculated MW	17kDa KDa

**MB / Myoglobin Antibody (clone AT6E10) - Additional Information****Gene ID** 4151**Other Names**  
Myoglobin, MB**Target/Specificity**  
Human Myoglobin**Reconstitution & Storage**

Can be stored at 4°C. For long term storage, aliquot and store at -20°C. Avoid repeated freezing and thawing cycles.

**Precautions**

MB / Myoglobin Antibody (clone AT6E10) is for research use only and not for use in diagnostic or therapeutic procedures.

**MB / Myoglobin Antibody (clone AT6E10) - Protein Information****Name** MB ([HGNC:6915](#))**Function**

Monomeric heme protein which primary function is to store oxygen and facilitate its diffusion within muscle tissues. Reversibly binds oxygen through a pentacoordinated heme iron and enables its timely and efficient release as needed during periods of heightened demand (PubMed:<a href="http://www.uniprot.org/citations/30918256" target="\_blank">30918256</a>, PubMed:<a href="http://www.uniprot.org/citations/34679218" target="\_blank">34679218</a>). Depending on the oxidative conditions of tissues and cells, and in addition to its ability to bind oxygen, it also has a nitrite reductase activity whereby it regulates the production of bioactive nitric oxide (PubMed:<a href="http://www.uniprot.org/citations/32891753" target="\_blank">32891753</a>). Under stress conditions, like hypoxia and anoxia, it also protects cells against reactive oxygen species thanks to its pseudoperoxidase activity (PubMed:<a href="http://www.uniprot.org/citations/34679218" target="\_blank">34679218</a>).

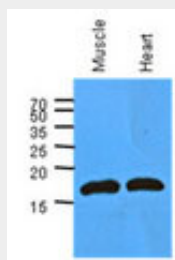
**Cellular Location**

Cytoplasm, sarcoplasm

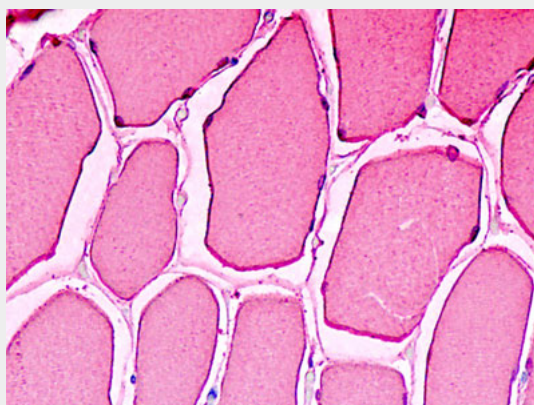
**Volume**50  $\mu$ l**MB / Myoglobin Antibody (clone AT6E10) - Protocols**

Provided below are standard protocols that you may find useful for product applications.

- [Western Blot](#)
- [Blocking Peptides](#)
- [Dot Blot](#)
- [Immunohistochemistry](#)
- [Immunofluorescence](#)
- [Immunoprecipitation](#)
- [Flow Cytometry](#)
- [Cell Culture](#)

**MB / Myoglobin Antibody (clone AT6E10) - Images**

Western Blot: The extracts of mouse muscle and heart (40 ug) were resolved by SDS-PAGE,...



Anti-MB / Myoglobin antibody IHC staining of human skeletal muscle.

**MB / Myoglobin Antibody (clone AT6E10) - Background**

Serves as a reserve supply of oxygen and facilitates the movement of oxygen within muscles.

**MB / Myoglobin Antibody (clone AT6E10) - References**

Weller P., et al. EMBO J. 3:439-446(1984).  
Akaboshi E., et al. Gene 33:241-249(1985).

Collins J.E.,et al.Genome Biol. 5:R84.1-R84.11(2004).  
Ebert L.,et al.Submitted (JUN-2004) to the EMBL/GenBank/DDBJ databases.  
Dunham I.,et al.Nature 402:489-495(1999).