

MOB1B / MOBKL1A Antibody (aa101-150)
Rabbit Polyclonal Antibody
Catalog # ALS15761**Specification**

MOB1B / MOBKL1A Antibody (aa101-150) - Product Information

Application	IHC, WB
Primary Accession	O7L9L4
Reactivity	Human, Mouse
Host	Rabbit
Clonality	Polyclonal
Calculated MW	25kDa KDa

MOB1B / MOBKL1A Antibody (aa101-150) - Additional Information**Gene ID** 92597**Other Names**

MOB kinase activator 1B, Mob1 homolog 1A, Mob1A, Mob1B, Mps one binder kinase activator-like 1A, MOB1B, MOB4A, MOBKL1A

Target/Specificity

MOL1A Antibody detects endogenous levels of total MOL1A protein.

Reconstitution & Storage

Store at -20°C for up to one year.

Precautions

MOB1B / MOBKL1A Antibody (aa101-150) is for research use only and not for use in diagnostic or therapeutic procedures.

MOB1B / MOBKL1A Antibody (aa101-150) - Protein Information**Name** MOB1B**Synonyms** MOB4A, MOBKL1A**Function**

Activator of LATS1/2 in the Hippo signaling pathway which plays a pivotal role in organ size control and tumor suppression by restricting proliferation and promoting apoptosis. The core of this pathway is composed of a kinase cascade wherein STK3/MST2 and STK4/MST1, in complex with its regulatory protein SAV1, phosphorylates and activates LATS1/2 in complex with its regulatory protein MOB1, which in turn phosphorylates and inactivates YAP1 oncoprotein and WWTR1/TAZ. Phosphorylation of YAP1 by LATS1/2 inhibits its translocation into the nucleus to regulate cellular genes important for cell proliferation, cell death, and cell migration. Stimulates the kinase activity of STK38L.

Cellular Location

Cytoplasm. Nucleus

Tissue Location

Adrenal gland, bone marrow, brain, lung, placenta, prostate, salivary gland, skeletal muscle, testis, thymus, thyroid gland, uterus, colon with mucosa, fetal brain and fetal liver

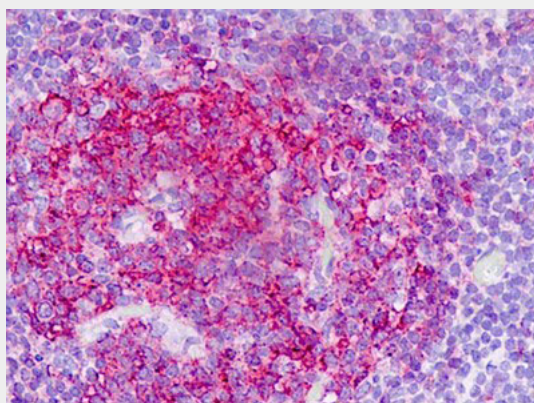
Volume

50 μ l

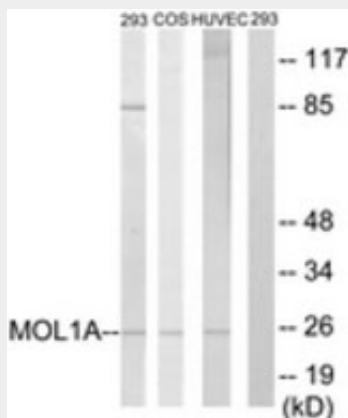
MOB1B / MOBKL1A Antibody (aa101-150) - Protocols

Provided below are standard protocols that you may find useful for product applications.

- [Western Blot](#)
- [Blocking Peptides](#)
- [Dot Blot](#)
- [Immunohistochemistry](#)
- [Immunofluorescence](#)
- [Immunoprecipitation](#)
- [Flow Cytometry](#)
- [Cell Culture](#)

MOB1B / MOBKL1A Antibody (aa101-150) - Images

Human, Tonsil: Formalin-Fixed Paraffin-Embedded (FFPE)



Western blot of extracts from 293/COS7/HUVEC cells, treated with IFN 2500U/ml 30', using MOB1A...

MOB1B / MOBKL1A Antibody (aa101-150) - Background

Activator of LATS1/2 in the Hippo signaling pathway which plays a pivotal role in organ size control and tumor suppression by restricting proliferation and promoting apoptosis. The core of this pathway is composed of a kinase cascade wherein STK3/MST2 and STK4/MST1, in complex with its regulatory protein SAV1, phosphorylates and activates LATS1/2 in complex with its regulatory protein MOB1, which in turn phosphorylates and inactivates YAP1 oncoprotein and WWTR1/TAZ. Phosphorylation of YAP1 by LATS1/2 inhibits its translocation into the nucleus to regulate cellular genes important for cell proliferation, cell death, and cell migration. Stimulates the kinase activity of STK38L.

MOB1B / MOBKL1A Antibody (aa101-150) - References

Florindo C.S.,et al.Submitted (JUL-2003) to the EMBL/GenBank/DDBJ databases.
Ota T.,et al.Nat. Genet. 36:40-45(2004).
Mural R.J.,et al.Submitted (JUL-2005) to the EMBL/GenBank/DDBJ databases.
Devroe E.,et al.J. Biol. Chem. 279:24444-24451(2004).
Praskova M.,et al.Curr. Biol. 18:311-321(2008).