

**ANP32B / APRIL Antibody (C-Terminus)**  
**Goat Polyclonal Antibody**  
**Catalog # ALS15773****Specification**

---

**ANP32B / APRIL Antibody (C-Terminus) - Product Information**

Application	IHC
Primary Accession	<a href="#">Q92688</a>
Reactivity	Human, Mouse, Rat, Pig, Horse, Bovine, Dog
Host	Goat
Clonality	Polyclonal
Calculated MW	29kDa KDa

**ANP32B / APRIL Antibody (C-Terminus) - Additional Information****Gene ID** 10541**Other Names**

Acidic leucine-rich nuclear phosphoprotein 32 family member B, Acidic protein rich in leucines, Putative HLA-DR-associated protein I-2, PHAPI2, Silver-stainable protein SSP29, ANP32B, APRIL, PHAPI2

**Target/Specificity**

Human ANP32B / APRIL. This antibody does NOT recognize the TNF family member also known as APRIL - Gene ID number 8741.

**Reconstitution & Storage**

Store at -20°C. Minimize freezing and thawing.

**Precautions**

ANP32B / APRIL Antibody (C-Terminus) is for research use only and not for use in diagnostic or therapeutic procedures.

**ANP32B / APRIL Antibody (C-Terminus) - Protein Information****Name** ANP32B**Synonyms** APRIL, PHAPI2**Function**

Multifunctional protein that is involved in the regulation of many processes including cell proliferation, apoptosis, cell cycle progression or transcription (PubMed:<a href="http://www.uniprot.org/citations/20015864" target="\_blank">20015864</a>, PubMed:<a href="http://www.uniprot.org/citations/18039846" target="\_blank">18039846</a>). Regulates the proliferation of neuronal stem cells, differentiation of leukemic cells and progression from G1 to S phase of the cell cycle. As negative regulator of caspase-3-dependent apoptosis, may act as an antagonist of ANP32A in regulating tissue homeostasis (PubMed:<a

[20015864](http://www.uniprot.org/citations/20015864)). Exhibits histone chaperone properties, able to recruit histones to certain promoters, thus regulating the transcription of specific genes (PubMed: [20538007](http://www.uniprot.org/citations/20538007), PubMed: [18039846](http://www.uniprot.org/citations/18039846)). Also plays an essential role in the nucleocytoplasmic transport of specific mRNAs via the uncommon nuclear mRNA export receptor XPO1/CRM1 (PubMed: [17178712](http://www.uniprot.org/citations/17178712)). Participates in the regulation of adequate adaptive immune responses by acting on mRNA expression and cell proliferation (By similarity).

#### **Cellular Location**

[Isoform 1]: Nucleus. Cytoplasm Note=Accumulates in the nuclei at the S phase.

#### **Tissue Location**

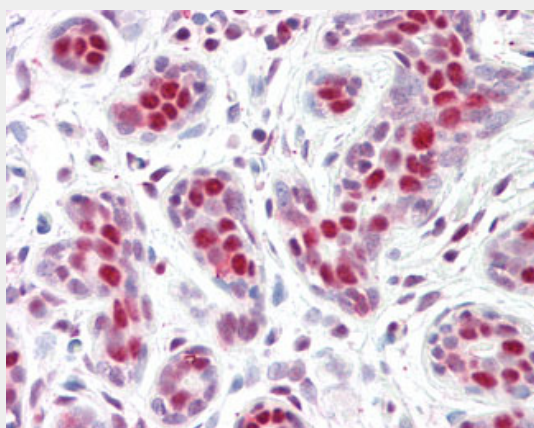
Expressed in heart, lung, pancreas, prostate and in spleen, thymus and placenta.

### **ANP32B / APRIL Antibody (C-Terminus) - Protocols**

Provided below are standard protocols that you may find useful for product applications.

- [Western Blot](#)
- [Blocking Peptides](#)
- [Dot Blot](#)
- [Immunohistochemistry](#)
- [Immunofluorescence](#)
- [Immunoprecipitation](#)
- [Flow Cytometry](#)
- [Cell Culture](#)

### **ANP32B / APRIL Antibody (C-Terminus) - Images**



Anti-ANP32B / APRIL antibody IHC staining of human breast.

### **ANP32B / APRIL Antibody (C-Terminus) - Background**

Multifunctional protein working as a cell cycle progression factor as well as a cell survival factor. Required for the progression from the G1 to the S phase. Anti-apoptotic protein which functions as a caspase-3 inhibitor. Has no phosphatase 2A (PP2A) inhibitor activity (By similarity). Exhibits histone chaperone properties, stimulating core histones to assemble into a nucleosome.

### **ANP32B / APRIL Antibody (C-Terminus) - References**

Vaesen M.,et al.Submitted (AUG-1996) to the EMBL/GenBank/DDBJ databases.

Zhu L.,et al.Submitted (DEC-1996) to the EMBL/GenBank/DDBJ databases.

Mencinger M.,et al.Biochim. Biophys. Acta 1395:176-180(1998).

Ota T.,et al.Nat. Genet. 36:40-45(2004).

Humphray S.J.,et al.Nature 429:369-374(2004).