

CFL2 / Cofilin 2 Antibody (C-Terminus)
Goat Polyclonal Antibody
Catalog # ALS15776**Specification**

CFL2 / Cofilin 2 Antibody (C-Terminus) - Product Information

Application	WB, IHC-P, E
Primary Accession	Q9Y281
Reactivity	Human, Mouse, Rat, Hamster, Monkey, Pig, Chicken, Horse, Bovine, Dog
Host	Goat
Clonality	Polyclonal
Calculated MW	19kDa KDa
Dilution	WB~~1:1000 IHC-P~~N/A E~~N/A

CFL2 / Cofilin 2 Antibody (C-Terminus) - Additional Information**Gene ID** 1073**Other Names**

Cofilin-2, Cofilin, muscle isoform, CFL2

Target/Specificity

Human CFL2. This antibody is expected to recognise both reported isoforms (NP_068733 and NP_619579)

Reconstitution & Storage

Store at -20°C. Minimize freezing and thawing.

Precautions

CFL2 / Cofilin 2 Antibody (C-Terminus) is for research use only and not for use in diagnostic or therapeutic procedures.

CFL2 / Cofilin 2 Antibody (C-Terminus) - Protein Information**Name** CFL2**Function**

Controls reversibly actin polymerization and depolymerization in a pH-sensitive manner. Its F-actin depolymerization activity is regulated by association with CSPR3 (PubMed:19752190). It has the ability to bind G- and F-actin in a 1:1 ratio of cofilin to actin. It is the major component of intranuclear and cytoplasmic actin rods. Required for muscle maintenance. May play a role during the exchange of alpha-actin forms during the early postnatal remodeling of the sarcomere (By similarity).

Cellular Location

Nucleus matrix. Cytoplasm, cytoskeleton. Note=Colocalizes with CSPR3 in the Z line of sarcomeres.

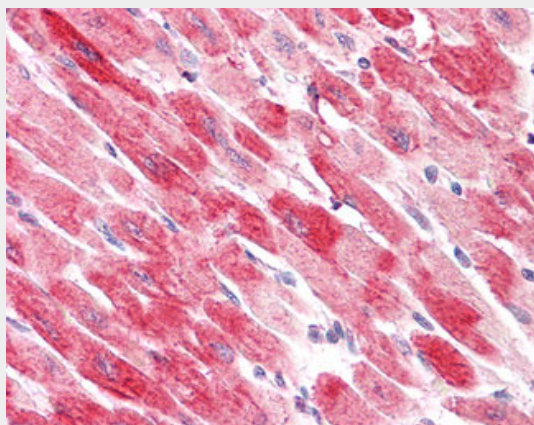
Tissue Location

Isoform CFL2b is expressed predominantly in skeletal muscle and heart. Isoform CFL2a is expressed in various tissues

CFL2 / Cofilin 2 Antibody (C-Terminus) - Protocols

Provided below are standard protocols that you may find useful for product applications.

- [Western Blot](#)
- [Blocking Peptides](#)
- [Dot Blot](#)
- [Immunohistochemistry](#)
- [Immunofluorescence](#)
- [Immunoprecipitation](#)
- [Flow Cytometry](#)
- [Cell Culture](#)

CFL2 / Cofilin 2 Antibody (C-Terminus) - Images

Anti-CFL2 / Cofilin 2 antibody IHC staining of human heart.



(0.003 ug/ml) Staining of Human Muscle lysate (35 ug protein in RIPA buffer).

CFL2 / Cofilin 2 Antibody (C-Terminus) - Background

Controls reversibly actin polymerization and depolymerization in a pH-sensitive manner. It has the

ability to bind G- and F-actin in a 1:1 ratio of cofilin to actin. It is the major component of intranuclear and cytoplasmic actin rods (By similarity).

CFL2 / Cofilin 2 Antibody (C-Terminus) - References

Jin J.,et al.Submitted (MAR-1999) to the EMBL/GenBank/DDBJ databases.

Thirion C.,et al.Eur. J. Biochem. 268:3473-3482(2001).

Heilig R.,et al.Nature 421:601-607(2003).

Mural R.J.,et al.Submitted (SEP-2005) to the EMBL/GenBank/DDBJ databases.

Bienvenut W.V.,et al.Submitted (MAR-2008) to UniProtKB.