

PRKCDBP / CAVIN3 Antibody (Internal)
Goat Polyclonal Antibody
Catalog # ALS15783**Specification**

PRKCDBP / CAVIN3 Antibody (Internal) - Product Information

Application	WB, IHC-P, E
Primary Accession	Q969G5
Reactivity	Human, Hamster, Monkey, Pig, Horse, Dog
Host	Goat
Clonality	Polyclonal
Calculated MW	28kDa KDa
Dilution	WB~~1:1000 IHC-P~~N/A E~~N/A

PRKCDBP / CAVIN3 Antibody (Internal) - Additional Information**Gene ID** 112464**Other Names**

Protein kinase C delta-binding protein, Cavin-3, Serum deprivation response factor-related gene product that binds to C-kinase, hSRBC, PRKCDBP, SRBC

Target/Specificity

Human PRKCDBP.

Reconstitution & Storage

Store at -20°C. Minimize freezing and thawing.

Precautions

PRKCDBP / CAVIN3 Antibody (Internal) is for research use only and not for use in diagnostic or therapeutic procedures.

PRKCDBP / CAVIN3 Antibody (Internal) - Protein Information**Name** CAVIN3 ([HGNC:9400](#))**Synonyms** PRKCDBP, SRBC**Function**

Regulates the traffic and/or budding of caveolae (PubMed:19262564). Plays a role in caveola formation in a tissue- specific manner. Required for the formation of caveolae in smooth muscle but not in the lung and heart endothelial cells. Regulates the equilibrium between cell surface-associated and cell surface- dissociated caveolae by promoting the rapid release of caveolae from the cell surface. Plays a role in the regulation of the circadian clock. Modulates the period length and phase of circadian gene expression and also regulates expression and

interaction of the core clock components PER1/2 and CRY1/2 (By similarity).

Cellular Location

Cytoplasm {ECO:0000250|UniProtKB:Q91VJ2}. Membrane, caveola. Cytoplasm, cytosol {ECO:0000250|UniProtKB:Q91VJ2}. Note=Localizes in the caveolae in a caveolin-dependent manner.

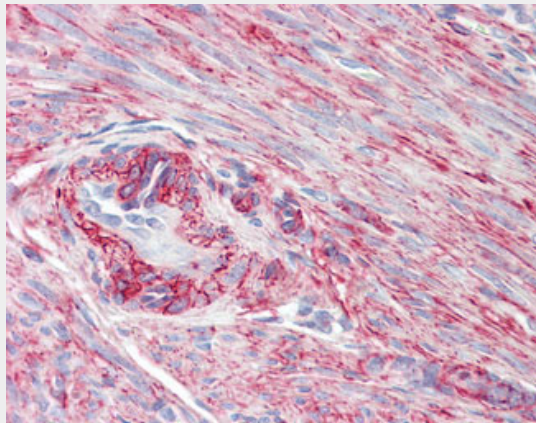
Tissue Location

Skeletal muscle, liver, stomach, lung, kidney and heart (at protein level). Strongly expressed in mammary and epithelial cells.

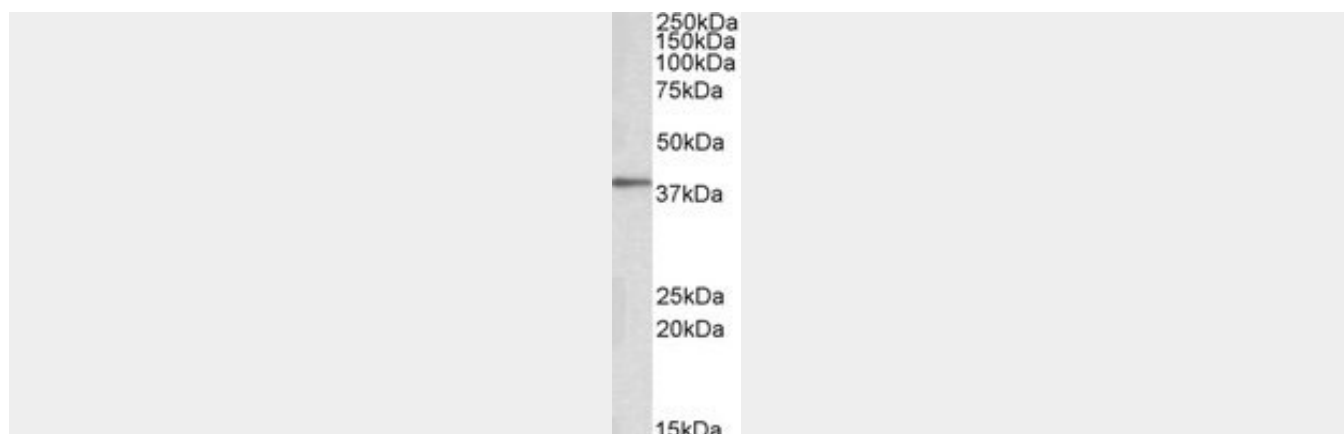
PRKCDBP / CAVIN3 Antibody (Internal) - Protocols

Provided below are standard protocols that you may find useful for product applications.

- [Western Blot](#)
- [Blocking Peptides](#)
- [Dot Blot](#)
- [Immunohistochemistry](#)
- [Immunofluorescence](#)
- [Immunoprecipitation](#)
- [Flow Cytometry](#)
- [Cell Culture](#)

PRKCDBP / CAVIN3 Antibody (Internal) - Images

Anti-PRKCDBP / CAVIN3 antibody IHC staining of human uterus, myometrium.



PRKCDBP antibody (0.1 ug/ml) staining of Human Adipose cell lysate (35 ug protein/ml in RIPA buffer).

PRKCDBP / CAVIN3 Antibody (Internal) - Background

Plays a role in the regulation of the circadian clock. Modulates the period length and phase of circadian gene expression and also regulates expression and interaction of the core clock components PER1/2 and CRY1/2. Seems to have an immune potentiation function.

PRKCDBP / CAVIN3 Antibody (Internal) - References

Xu X.L.,et al.Cancer Res. 61:7943-7949(2001).
Taylor T.D.,et al.Nature 440:497-500(2006).
Mural R.J.,et al.Submitted (SEP-2005) to the EMBL/GenBank/DDBJ databases.
Olsen J.V.,et al.Cell 127:635-648(2006).
Cantin G.T.,et al.J. Proteome Res. 7:1346-1351(2008).