

ZEB1 / AREB6 Antibody
Rabbit Polyclonal Antibody
Catalog # ALS15824**Specification**

ZEB1 / AREB6 Antibody - Product Information

Application	IHC
Primary Accession	P37275
Reactivity	Human
Host	Rabbit
Clonality	Polyclonal
Calculated MW	124kDa KDa

ZEB1 / AREB6 Antibody - Additional Information**Gene ID** 6935**Other Names**

Zinc finger E-box-binding homeobox 1, NIL-2-A zinc finger protein, Negative regulator of IL2, Transcription factor 8, TCF-8, ZEB1, AREB6, TCF8

Target/Specificity

AREB6 antibody detects endogenous levels of AREB6 protein. Not tested with other proteins.

Reconstitution & Storage

Store at -20°C for up to one year.

Precautions

ZEB1 / AREB6 Antibody is for research use only and not for use in diagnostic or therapeutic procedures.

ZEB1 / AREB6 Antibody - Protein Information**Name** ZEB1 ([HGNC:11642](#))**Function**

Acts as a transcriptional repressor. Inhibits interleukin-2 (IL-2) gene expression. Enhances or represses the promoter activity of the ATP1A1 gene depending on the quantity of cDNA and on the cell type. Represses E-cadherin promoter and induces an epithelial-mesenchymal transition (EMT) by recruiting SMARCA4/BRG1. Represses BCL6 transcription in the presence of the corepressor CTBP1. Positively regulates neuronal differentiation. Represses RCOR1 transcription activation during neurogenesis. Represses transcription by binding to the E box (5'-CANNTG-3'). In the absence of TGFB1, acts as a repressor of COL1A2 transcription via binding to the E-box in the upstream enhancer region (By similarity).

Cellular Location

Nucleus

Tissue Location

Colocalizes with SMARCA4/BRG1 in E-cadherin- negative cells from established lines, and stroma of normal colon as well as in de-differentiated epithelial cells at the invasion front of colorectal carcinomas (at protein level). Expressed in heart and skeletal muscle, but not in liver, spleen, or pancreas

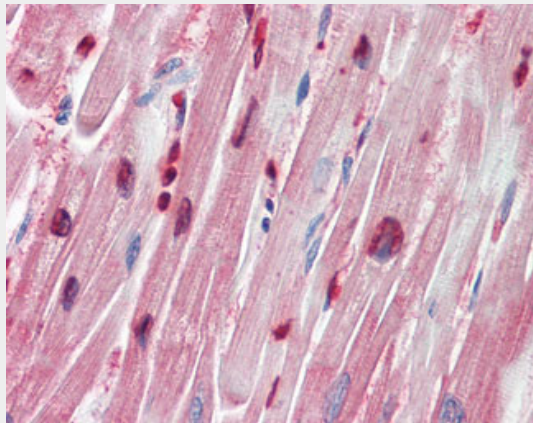
Volume

50 µl

ZEB1 / AREB6 Antibody - Protocols

Provided below are standard protocols that you may find useful for product applications.

- [Western Blot](#)
- [Blocking Peptides](#)
- [Dot Blot](#)
- [Immunohistochemistry](#)
- [Immunofluorescence](#)
- [Immunoprecipitation](#)
- [Flow Cytometry](#)
- [Cell Culture](#)

ZEB1 / AREB6 Antibody - Images

Human Heart: Formalin-Fixed, Paraffin-Embedded (FFPE)

ZEB1 / AREB6 Antibody - Background

Acts as a transcriptional repressor. Inhibits interleukin-2 (IL-2) gene expression. Enhances or represses the promoter activity of the ATP1A1 gene depending on the quantity of cDNA and on the cell type. Represses E-cadherin promoter and induces an epithelial-mesenchymal transition (EMT) by recruiting SMARCA4/BRG1. Represses BCL6 transcription in the presence of the corepressor CTBP1. Positively regulates neuronal differentiation. Represses RCOR1 transcription activation during neurogenesis. Represses transcription by binding to the E box (5'-CANNTG-3'). Promotes tumorigenicity by repressing stemness-inhibiting microRNAs.

ZEB1 / AREB6 Antibody - References

Watanabe Y., et al. J. Biochem. 114:849-855(1993).
Bachman N.J., et al. Submitted (JUL-1994) to the EMBL/GenBank/DDBJ databases.
Ota T., et al. Nat. Genet. 36:40-45(2004).

Deloukas P.,et al.Nature 429:375-381(2004).

Mural R.J.,et al.Submitted (SEP-2005) to the EMBL/GenBank/DDBJ databases.