

NRBP1 / NRBP Antibody (clone 2C8)
Mouse Monoclonal Antibody
Catalog # ALS15827**Specification**

NRBP1 / NRBP Antibody (clone 2C8) - Product Information

Application	WB
Primary Accession	Q9UHY1
Reactivity	Human
Host	Mouse
Clonality	Monoclonal
Calculated MW	60kDa KDa

NRBP1 / NRBP Antibody (clone 2C8) - Additional Information**Gene ID** 29959**Other Names**

Nuclear receptor-binding protein, NRBP1, BCON3 {ECO:0000312|EMBL:AAF21967.1}, NRBP

Target/Specificity

Human NRBP1 / MADM

Reconstitution & Storage

Store at -20°C. Minimize freezing and thawing.

Precautions

NRBP1 / NRBP Antibody (clone 2C8) is for research use only and not for use in diagnostic or therapeutic procedures.

NRBP1 / NRBP Antibody (clone 2C8) - Protein Information**Name** NRBP1**Synonyms** BCON3 {ECO:0000312|EMBL:AAF21967.1}, NRB**Function**

Required for embryonic development (By similarity). Plays a role in intestinal epithelial cell fate and proliferation, thereby involved in the architectural development of the intestine potentially via the regulation of Wnt-responsive genes (By similarity). May play a role in subcellular trafficking between the endoplasmic reticulum and Golgi apparatus through interactions with the Rho-type GTPases (PubMed:<<http://www.uniprot.org/citations/11956649>>11956649). Binding to the NS3 protein of dengue virus type 2 appears to subvert this activity into the alteration of the intracellular membrane structure associated with flaviviral replication (PubMed:<<http://www.uniprot.org/citations/15084397>>15084397).

Cellular Location

Cytoplasm, cell cortex. Endomembrane system. Cell projection, lamellipodium. Note=Colocalizes with activated RAC3 to endomembranes and at the cell periphery in lamellipodia

Tissue Location

Ubiquitously expressed in all tissues examined with high levels in the testis.

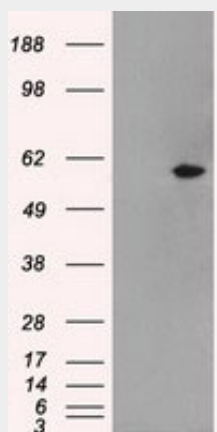
Volume

50 µl

NRBP1 / NRBP Antibody (clone 2C8) - Protocols

Provided below are standard protocols that you may find useful for product applications.

- [Western Blot](#)
- [Blocking Peptides](#)
- [Dot Blot](#)
- [Immunohistochemistry](#)
- [Immunofluorescence](#)
- [Immunoprecipitation](#)
- [Flow Cytometry](#)
- [Cell Culture](#)

NRBP1 / NRBP Antibody (clone 2C8) - Images

HEK293T cells were transfected with the pCMV6-ENTRY control (Left lane) or pCMV6-ENTRY NRBP1...

NRBP1 / NRBP Antibody (clone 2C8) - Background

May play a role in subcellular trafficking between the endoplasmic reticulum and Golgi apparatus through interactions with the Rho-type GTPases. Binding to the NS3 protein of dengue virus type 2 appears to subvert this activity into the alteration of the intracellular membrane structure associated with flaviviral replication.

NRBP1 / NRBP Antibody (clone 2C8) - References

Hooper J.D., et al. Genomics 66:113-118(2000).
Ota T., et al. Nat. Genet. 36:40-45(2004).
Wiemann S., et al. Genome Res. 11:422-435(2001).
Suzuki Y., et al. Submitted (APR-2005) to the EMBL/GenBank/DDBJ databases.

Hillier L.W.,et al.Nature 434:724-731(2005).