

**LGALS3 / Galectin 3 Antibody (Internal)**  
**Goat Polyclonal Antibody**  
**Catalog # ALS15835****Specification**

---

**LGALS3 / Galectin 3 Antibody (Internal) - Product Information**

Application	WB, IHC-P, E
Primary Accession	<a href="#">P17931</a>
Reactivity	Human, Mouse
Host	Goat
Clonality	Polyclonal
Calculated MW	26kDa KDa
Dilution	WB~~1:1000 IHC-P~~N/A E~~N/A

**LGALS3 / Galectin 3 Antibody (Internal) - Additional Information****Gene ID** 3958**Other Names**

Galectin-3, Gal-3, 35 kDa lectin, Carbohydrate-binding protein 35, CBP 35, Galactose-specific lectin 3, Galactoside-binding protein, GALBP, IgE-binding protein, L-31, Laminin-binding protein, Lectin L-29, Mac-2 antigen, LGALS3, MAC2

**Target/Specificity**

Mouse LGALS3 / Galectin-3. Reported variants represent identical protein: NP\_001139425.1, NP\_034835.1

**Reconstitution & Storage**

Store at -20°C. Minimize freezing and thawing.

**Precautions**

LGALS3 / Galectin 3 Antibody (Internal) is for research use only and not for use in diagnostic or therapeutic procedures.

**LGALS3 / Galectin 3 Antibody (Internal) - Protein Information****Name** LGALS3 ([HGNC:6563](#))**Synonyms** MAC2**Function**

Galactose-specific lectin which binds IgE. May mediate with the alpha-3, beta-1 integrin the stimulation by CSPG4 of endothelial cells migration. Together with DMBT1, required for terminal differentiation of columnar epithelial cells during early embryogenesis (By similarity). In the nucleus: acts as a pre-mRNA splicing factor. Involved in acute inflammatory responses including neutrophil activation and adhesion, chemoattraction of monocytes macrophages, opsonization of

apoptotic neutrophils, and activation of mast cells. Together with TRIM16, coordinates the recognition of membrane damage with mobilization of the core autophagy regulators ATG16L1 and BECN1 in response to damaged endomembranes.

#### **Cellular Location**

Cytoplasm. Nucleus. Secreted. Note=Secreted by a non- classical secretory pathway and associates with the cell surface. Can be secreted; the secretion is dependent on protein unfolding and facilitated by the cargo receptor TMED10; it results in protein translocation from the cytoplasm into the ERGIC (endoplasmic reticulum- Golgi intermediate compartment) followed by vesicle entry and secretion (PubMed:32272059).

#### **Tissue Location**

A major expression is found in the colonic epithelium. It is also abundant in the activated macrophages. Expressed in fetal membranes.

#### **Volume**

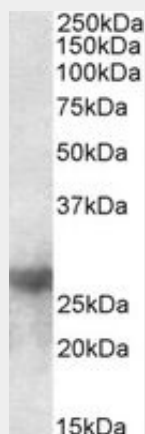
50 µl

### **LGALS3 / Galectin 3 Antibody (Internal) - Protocols**

Provided below are standard protocols that you may find useful for product applications.

- [Western Blot](#)
- [Blocking Peptides](#)
- [Dot Blot](#)
- [Immunohistochemistry](#)
- [Immunofluorescence](#)
- [Immunoprecipitation](#)
- [Flow Cytometry](#)
- [Cell Culture](#)

### **LGALS3 / Galectin 3 Antibody (Internal) - Images**



LGALS3 antibody (0.5 ug/ml) staining of Mouse Heart lysate (35 ug protein/ml in RIPA buffer).

### **LGALS3 / Galectin 3 Antibody (Internal) - Background**

Galactose-specific lectin which binds IgE. May mediate with the alpha-3, beta-1 integrin the stimulation by CSPG4 of endothelial cells migration. Together with DMBT1, required for terminal differentiation of columnar epithelial cells during early embryogenesis (By similarity). In the nucleus: acts as a pre-mRNA splicing factor. Involved in acute inflammatory responses including

neutrophil activation and adhesion, chemoattraction of monocytes macrophages, opsonization of apoptotic neutrophils, and activation of mast cells.

### **LGALS3 / Galectin 3 Antibody (Internal) - References**

Robertson M.W.,et al.Biochemistry 29:8093-8100(1990).  
Cherayil B.,et al.Proc. Natl. Acad. Sci. U.S.A. 87:7324-7328(1990).  
Oda Y.,et al.Gene 99:279-283(1991).  
Raz A.,et al.Cancer Res. 51:2173-2178(1991).  
Lotz M.M.,et al.Proc. Natl. Acad. Sci. U.S.A. 90:3466-3470(1993).