

**PDCD4 Antibody (aa210-221)**  
**Goat Polyclonal Antibody**  
**Catalog # ALS15836****Specification**

---

**PDCD4 Antibody (aa210-221) - Product Information**

Application	IHC, WB
Primary Accession	<a href="#">Q53EL6</a>
Reactivity	Human, Mouse, Rat, Rabbit, Hamster, Monkey, Chicken, Goat, Horse, Xenopus, Bovine, Guinea Pig, Dog
Host	Goat
Clonality	Polyclonal
Calculated MW	52kDa KDa

**PDCD4 Antibody (aa210-221) - Additional Information****Gene ID** 27250**Other Names**

Programmed cell death protein 4, Neoplastic transformation inhibitor protein, Nuclear antigen H731-like, Protein 197/15a, PDCD4, H731

**Target/Specificity**

Human PDCD4. This antibody is expected to recognize all reported isoforms (NP\_055271.2; NP\_663314.1; NP\_001186421.1).

**Reconstitution & Storage**

Store at -20°C. Minimize freezing and thawing.

**Precautions**

PDCD4 Antibody (aa210-221) is for research use only and not for use in diagnostic or therapeutic procedures.

**PDCD4 Antibody (aa210-221) - Protein Information****Name** PDCD4**Synonyms** H731**Function**

Inhibits translation initiation and cap-dependent translation. May exert its function by hindering the interaction between EIF4A1 and EIF4G. Inhibits the helicase activity of EIF4A. Modulates the activation of JUN kinase. Down-regulates the expression of MAP4K1, thus inhibiting events important in driving invasion, namely, MAPK85 activation and consequent JUN-dependent transcription. May play a role in apoptosis. Tumor suppressor. Inhibits tumor promoter-induced neoplastic transformation. Binds RNA (By similarity).

**Cellular Location**

Nucleus {ECO:0000250|UniProtKB:Q61823}. Cytoplasm {ECO:0000250|UniProtKB:Q61823}.  
Note=Shuttles between the nucleus and cytoplasm (By similarity). Predominantly nuclear under normal growth conditions, and when phosphorylated at Ser-457 (PubMed:16357133)

**Tissue Location**

Up-regulated in proliferative cells. Highly expressed in epithelial cells of the mammary gland. Reduced expression in lung cancer and colon carcinoma.

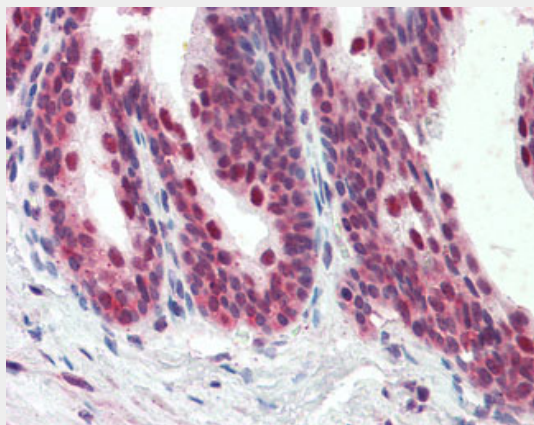
**Volume**

50  $\mu$ l

**PDCD4 Antibody (aa210-221) - Protocols**

Provided below are standard protocols that you may find useful for product applications.

- [Western Blot](#)
- [Blocking Peptides](#)
- [Dot Blot](#)
- [Immunohistochemistry](#)
- [Immunofluorescence](#)
- [Immunoprecipitation](#)
- [Flow Cytometry](#)
- [Cell Culture](#)

**PDCD4 Antibody (aa210-221) - Images**

Anti-PDCD4 antibody IHC staining of human prostate.



PDCD4 antibody (0.1  $\mu$ g/ml) staining of HeLa lysate (35  $\mu$ g protein in RIPA buffer).

**PDCD4 Antibody (aa210-221) - Background**

Inhibits translation initiation and cap-dependent translation. May exert its function by hindering the interaction between EIF4A1 and EIF4G. Inhibits the helicase activity of EIF4A. Modulates the activation of JUN kinase. Down-regulates the expression of MAP4K1, thus inhibiting events important in driving invasion, namely, MAPK85 activation and consequent JUN-dependent transcription. May play a role in apoptosis. Tumor suppressor. Inhibits tumor promoter-induced neoplastic transformation. Binds RNA (By similarity).

**PDCD4 Antibody (aa210-221) - References**

Matsuhashi S., et al. Res. Commun. Biochem. Cell Mol. Biol. 1:109-120(1997).  
Azzoni L., et al. J. Immunol. 161:3493-3500(1998).  
Ota T., et al. Nat. Genet. 36:40-45(2004).  
Totoki Y., et al. Submitted (APR-2005) to the EMBL/GenBank/DDBJ databases.  
Deloukas P., et al. Nature 429:375-381(2004).