

**TSN / Translin Antibody (C-Terminus)**  
**Rabbit Polyclonal Antibody**  
**Catalog # ALS15850****Specification**

---

**TSN / Translin Antibody (C-Terminus) - Product Information**

Application	IF, WB
Primary Accession	<a href="#">Q15631</a>
Reactivity	Human, Mouse, Rat
Host	Rabbit
Clonality	Polyclonal
Calculated MW	26kDa KDa

**TSN / Translin Antibody (C-Terminus) - Additional Information****Gene ID** 7247**Other Names**

Translin, 3.1.-., Component 3 of promoter of RISC, C3PO, TSN

**Target/Specificity**

Human TSN / Translin. At least two isoforms of Translin are known to exist; this antibody will detect both.

**Reconstitution & Storage**

Short term 4°C, long term aliquot and store at -20°C, avoid freeze thaw cycles. Store undiluted.

**Precautions**

TSN / Translin Antibody (C-Terminus) is for research use only and not for use in diagnostic or therapeutic procedures.

**TSN / Translin Antibody (C-Terminus) - Protein Information****Name** TSN**Function**

DNA-binding protein that specifically recognizes consensus sequences at the breakpoint junctions in chromosomal translocations, mostly involving immunoglobulin (Ig)/T-cell receptor gene segments. Seems to recognize single-stranded DNA ends generated by staggered breaks occurring at recombination hot spots.

**Cellular Location**

Cytoplasm. Nucleus

**TSN / Translin Antibody (C-Terminus) - Protocols**

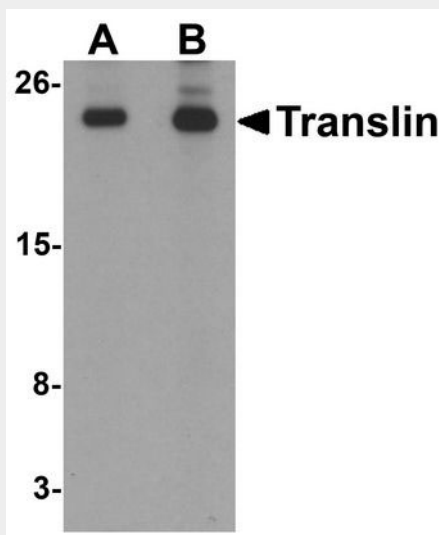
Provided below are standard protocols that you may find useful for product applications.

- [Western Blot](#)
- [Blocking Peptides](#)
- [Dot Blot](#)
- [Immunohistochemistry](#)
- [Immunofluorescence](#)
- [Immunoprecipitation](#)
- [Flow Cytometry](#)
- [Cell Culture](#)

#### TSN / Translin Antibody (C-Terminus) - Images



Immunofluorescence of Translin in human lung tissue with Translin antibody at 20 µg/mL.



Western blot analysis of Translin in rat lung tissue lysate with Translin antibody at (A) 0.5...

#### TSN / Translin Antibody (C-Terminus) - Background

DNA-binding protein that specifically recognizes consensus sequences at the breakpoint junctions in chromosomal translocations, mostly involving immunoglobulin (Ig)/T-cell receptor gene segments. Seems to recognize single-stranded DNA ends generated by staggered breaks occurring at recombination hot spots.

#### TSN / Translin Antibody (C-Terminus) - References

Aoki K.,et al.Nat. Genet. 10:167-174(1995).  
Kalnine N.,et al.Submitted (MAY-2003) to the EMBL/GenBank/DDBJ databases.  
Ota T.,et al.Nat. Genet. 36:40-45(2004).  
Hillier L.W.,et al.Nature 434:724-731(2005).  
Aoki K.,et al.Genomics 43:237-241(1997).