

RAPGEF4 / EPAC2 Antibody (N-Terminus)
Rabbit Polyclonal Antibody
Catalog # ALS15880**Specification**

RAPGEF4 / EPAC2 Antibody (N-Terminus) - Product Information

Application	WB, IHC-P, IF, E
Primary Accession	Q8WZA2
Reactivity	Human, Mouse, Rat
Host	Rabbit
Clonality	Polyclonal
Calculated MW	116kDa KDa
Dilution	WB~~1:1000 IHC-P~~N/A IF~~1:50~200 E~~N/A

RAPGEF4 / EPAC2 Antibody (N-Terminus) - Additional Information**Gene ID** 11069**Other Names**

Rap guanine nucleotide exchange factor 4, Exchange factor directly activated by cAMP 2, Exchange protein directly activated by cAMP 2, EPAC 2, cAMP-regulated guanine nucleotide exchange factor II, cAMP-GEFII, RAPGEF4, CGEF2, EPAC2

Target/Specificity

Human RAPGEF4 / EPAC2. At least two isoforms of EPAC2 are known to exist; this antibody will detect only the larger isoform.

Reconstitution & Storage

Short term 4°C, long term aliquot and store at -20°C, avoid freeze thaw cycles. Store undiluted.

Precautions

RAPGEF4 / EPAC2 Antibody (N-Terminus) is for research use only and not for use in diagnostic or therapeutic procedures.

RAPGEF4 / EPAC2 Antibody (N-Terminus) - Protein Information**Name** RAPGEF4**Synonyms** CGEF2, EPAC2**Function**

Guanine nucleotide exchange factor (GEF) for RAP1A, RAP1B and RAP2A small GTPases that is activated by binding cAMP. Seems not to activate RAB3A. Involved in cAMP-dependent, PKA-independent exocytosis through interaction with RIMS2 (By similarity).

Cellular Location

Cytoplasm. Membrane; Peripheral membrane protein

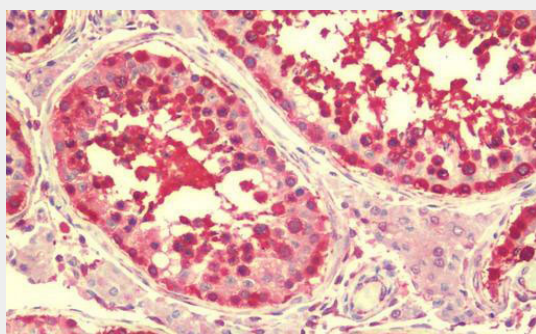
Tissue Location

Predominantly expressed in brain and adrenal gland. Isoform 2 is expressed in liver. Isoform 1 is expressed in liver at very low levels

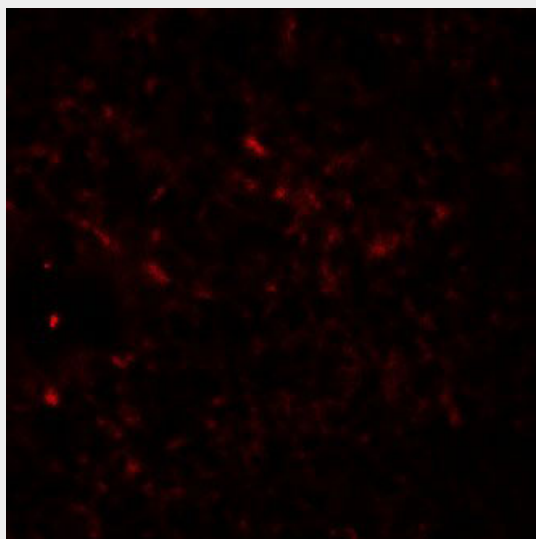
RAPGEF4 / EPAC2 Antibody (N-Terminus) - Protocols

Provided below are standard protocols that you may find useful for product applications.

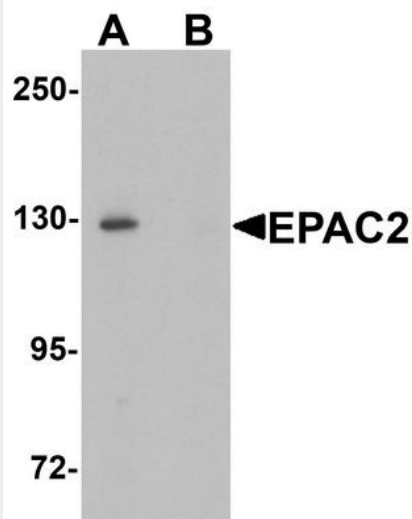
- [Western Blot](#)
- [Blocking Peptides](#)
- [Dot Blot](#)
- [Immunohistochemistry](#)
- [Immunofluorescence](#)
- [Immunoprecipitation](#)
- [Flow Cytometry](#)
- [Cell Culture](#)

RAPGEF4 / EPAC2 Antibody (N-Terminus) - Images

Anti-RAPGEF4 / EPAC2 antibody IHC staining of human testis.



Immunofluorescence of EPAC2 in mouse liver tissue with EPAC2 antibody at 20 µg/mL.



Western blot analysis of EPAC2 in rat liver tissue lysate with EPAC2 antibody at 1 ug/ml in (A)...

RAPGEF4 / EPAC2 Antibody (N-Terminus) - Background

Guanine nucleotide exchange factor (GEF) for RAP1A, RAP1B and RAP2A small GTPases that is activated by binding cAMP. Seems not to activate RAB3A. Involved in cAMP-dependent, PKA-independent exocytosis through interaction with RIMS2 (By similarity).

RAPGEF4 / EPAC2 Antibody (N-Terminus) - References

- Kawasaki H.,et al.Science 282:2275-2279(1998).
- Ueno H.,et al.Genomics 78:91-98(2001).
- Ota T.,et al.Nat. Genet. 36:40-45(2004).
- Hillier L.W.,et al.Nature 434:724-731(2005).
- de Rooij J.,et al.J. Biol. Chem. 275:20829-20836(2000).