

**PPHLN1 Antibody (Internal)**  
**Rabbit Polyclonal Antibody**  
**Catalog # ALS15883****Specification**

---

**PPHLN1 Antibody (Internal) - Product Information**

Application	WB, IHC-P, IF, E
Primary Accession	<a href="#">Q8NEY8</a>
Reactivity	Human, Mouse
Host	Rabbit
Clonality	Polyclonal
Calculated MW	53kDa KDa
Dilution	WB~~1:1000 IHC-P~~N/A IF~~1:50~200 E~~N/A

**PPHLN1 Antibody (Internal) - Additional Information****Gene ID** 51535**Other Names**

Periphilin-1, Gastric cancer antigen Ga50, PPHLN1

**Target/Specificity**

Human PPHLN1 / Periphilin.

**Reconstitution & Storage**

Short term 4°C, long term aliquot and store at -20°C, avoid freeze thaw cycles. Store undiluted.

**Precautions**

PPHLN1 Antibody (Internal) is for research use only and not for use in diagnostic or therapeutic procedures.

**PPHLN1 Antibody (Internal) - Protein Information****Name** PPHLN1 ([HGNC:19369](#))**Function**

Component of the HUSH complex, a multiprotein complex that mediates epigenetic repression. The HUSH complex is recruited to genomic loci rich in H3K9me3 and is probably required to maintain transcriptional silencing by promoting recruitment of SETDB1, a histone methyltransferase that mediates further deposition of H3K9me3. In the HUSH complex, contributes to the maintenance of the complex at chromatin (PubMed:<a href="http://www.uniprot.org/citations/26022416" target="\_blank">26022416</a>). Acts as a transcriptional corepressor and regulates the cell cycle, probably via the HUSH complex (PubMed:<a href="http://www.uniprot.org/citations/15474462" target="\_blank">15474462</a>, PubMed:<a href="http://www.uniprot.org/citations/17963697" target="\_blank">17963697</a>).

The HUSH complex is also involved in the silencing of unintegrated retroviral DNA: some part of the retroviral DNA formed immediately after infection remains unintegrated in the host genome and is transcriptionally repressed (PubMed:<a href="http://www.uniprot.org/citations/30487602" target="\_blank">30487602</a>). May be involved in epithelial differentiation by contributing to epidermal integrity and barrier formation (PubMed:<a href="http://www.uniprot.org/citations/12853457" target="\_blank">12853457</a>).

#### Cellular Location

Nucleus. Cytoplasm. Chromosome. Note=In undifferentiated keratinocytes expressed in speckle-type nuclear granules and at the nuclear membrane, but in the differentiated keratinocytes colocalized with periplakin at the cell periphery and at cell-cell junctions (PubMed:12853457) Localizes to chromatin (PubMed:26022416).

#### Tissue Location

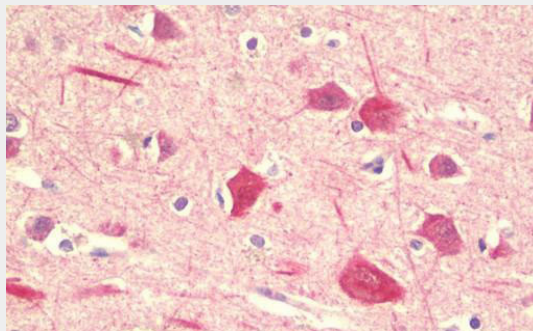
Ubiquitous..

### PPHLN1 Antibody (Internal) - Protocols

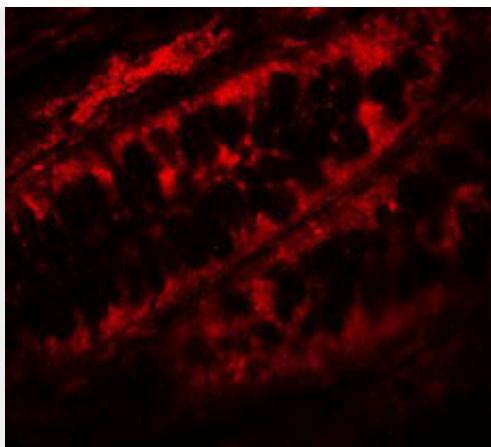
Provided below are standard protocols that you may find useful for product applications.

- [Western Blot](#)
- [Blocking Peptides](#)
- [Dot Blot](#)
- [Immunohistochemistry](#)
- [Immunofluorescence](#)
- [Immunoprecipitation](#)
- [Flow Cytometry](#)
- [Cell Culture](#)

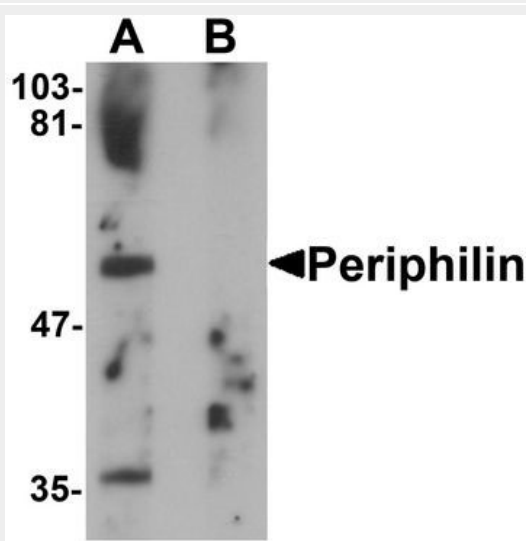
### PPHLN1 Antibody (Internal) - Images



Anti-PPHLN1 antibody IHC staining of human brain, cortex.



Immunofluorescence of Periphilin in human colon tissue with Periphilin antibody at 5 µg/mL.



Western blot analysis of Periphilin in mouse colon tissue lysate with Periphilin antibody at 1...

#### **PPHLN1 Antibody (Internal) - Background**

Involved in epithelial differentiation and contributes to epidermal integrity and barrier formation.

#### **PPHLN1 Antibody (Internal) - References**

- Line A.,et al.Br. J. Cancer 86:1824-1830(2002).
- Kazerounian S.,et al.J. Biol. Chem. 278:36707-36717(2003).
- Zhang Q.-H.,et al.Genome Res. 10:1546-1560(2000).
- Ota T.,et al.Nat. Genet. 36:40-45(2004).
- Li W.B.,et al.Submitted (JUL-2004) to the EMBL/GenBank/DDBJ databases.