

ANKLE1 Antibody (C-Terminus)
Chicken Polyclonal Antibody
Catalog # ALS15884**Specification**

ANKLE1 Antibody (C-Terminus) - Product Information

Application	WB
Primary Accession	Q8NAG6
Reactivity	Human, Mouse, Rat
Host	Chicken
Clonality	Polyclonal
Calculated MW	67kDa KDa

ANKLE1 Antibody (C-Terminus) - Additional Information**Gene ID** 126549**Other Names**

Ankyrin repeat and LEM domain-containing protein 1, Ankyrin repeat domain-containing protein 41, LEM-domain containing protein 3, ANKLE1, ANKRD41, LEM3

Target/Specificity

Human ANKLE1. Two isoforms of ANKLE1 are known to exist. ANKLE1 antibody is predicted to not cross-react with ANKLE2

Reconstitution & Storage

Short term 4°C, long term aliquot and store at -20°C, avoid freeze thaw cycles. Store undiluted.

Precautions

ANKLE1 Antibody (C-Terminus) is for research use only and not for use in diagnostic or therapeutic procedures.

ANKLE1 Antibody (C-Terminus) - Protein Information**Name** ANKLE1**Synonyms** ANKRD41, LEM3**Function**

Endonuclease that probably plays a role in the DNA damage response and DNA repair.

Cellular Location

Cytoplasm. Nucleus. Note=At the steady state, localizes predominantly in the cytoplasm.

Tissue Location

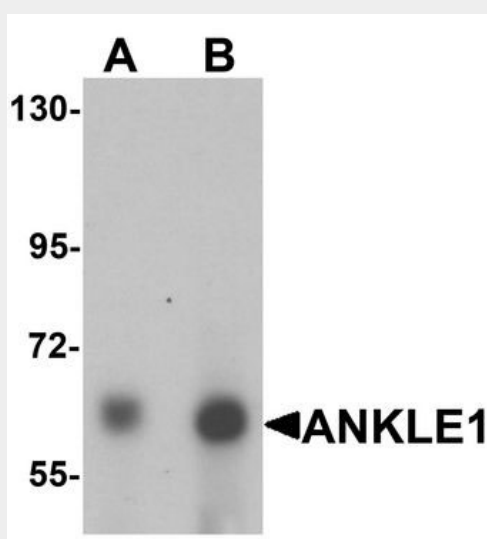
Expression is predominant in adult bone marrow.

ANKLE1 Antibody (C-Terminus) - Protocols

Provided below are standard protocols that you may find useful for product applications.

- [Western Blot](#)
- [Blocking Peptides](#)
- [Dot Blot](#)
- [Immunohistochemistry](#)
- [Immunofluorescence](#)
- [Immunoprecipitation](#)
- [Flow Cytometry](#)
- [Cell Culture](#)

ANKLE1 Antibody (C-Terminus) - Images



Western blot analysis of ANKLE1 in 293 cell lysate with ANKLE1 antibody at (A) 1 and (B) 2 ug/ml.

ANKLE1 Antibody (C-Terminus) - References

Brachner A.,et al.Submitted (OCT-2007) to the EMBL/GenBank/DDBJ databases.
Ota T.,et al.Nat. Genet. 36:40-45(2004).
Grimwood J.,et al.Nature 428:529-535(2004).