

**CAPG Antibody**  
**Rabbit Polyclonal Antibody**  
**Catalog # ALS15892****Specification**

---

**CAPG Antibody - Product Information**

Application	IHC
Primary Accession	<a href="#">P40121</a>
Reactivity	Human, Mouse, Rat
Host	Rabbit
Clonality	Polyclonal
Calculated MW	38kDa KDa

**CAPG Antibody - Additional Information****Gene ID** 822**Other Names**

Macrophage-capping protein, Actin regulatory protein CAP-G, CAPG, AFCP, MCP

**Target/Specificity**

CAPG antibody detects endogenous levels of CAPG protein. Not tested with other proteins.

**Reconstitution & Storage**

Store at -20°C for up to one year.

**Precautions**

CAPG Antibody is for research use only and not for use in diagnostic or therapeutic procedures.

**CAPG Antibody - Protein Information****Name** CAPG**Synonyms** AFCP, MCP**Function**

Calcium-sensitive protein which reversibly blocks the barbed ends of actin filaments but does not sever preformed actin filaments. May play an important role in macrophage function. May play a role in regulating cytoplasmic and/or nuclear structures through potential interactions with actin. May bind DNA.

**Cellular Location**

Nucleus. Cytoplasm Melanosome. Cell projection, lamellipodium {ECO:0000250|UniProtKB:P24452}. Cell projection, ruffle {ECO:0000250|UniProtKB:P24452}. Note=In macrophages, may be predominantly cytoplasmic. Nuclear localization was observed in fibroblasts. In macrophages, present at the membrane-cytoplasm interface. In activated macrophages, concentrated in the ruffles of the leading lamellipodia. {ECO:0000250|UniProtKB:P24452}

**Tissue Location**

Macrophages and macrophage-like cells.

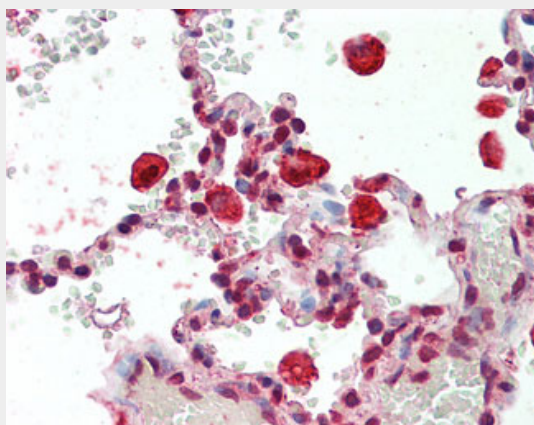
**Volume**

50  $\mu$ l

**CAPG Antibody - Protocols**

Provided below are standard protocols that you may find useful for product applications.

- [Western Blot](#)
- [Blocking Peptides](#)
- [Dot Blot](#)
- [Immunohistochemistry](#)
- [Immunofluorescence](#)
- [Immunoprecipitation](#)
- [Flow Cytometry](#)
- [Cell Culture](#)

**CAPG Antibody - Images**

Human Lung, Macrophages: Formalin-Fixed, Paraffin-Embedded (FFPE)

**CAPG Antibody - Background**

Calcium-sensitive protein which reversibly blocks the barbed ends of actin filaments but does not sever preformed actin filaments. May play an important role in macrophage function. May play a role in regulating cytoplasmic and/or nuclear structures through potential interactions with actin. May bind DNA.

**CAPG Antibody - References**

Dabiri G.A., et al. J. Biol. Chem. 267:16545-16552(1992).  
Suzuki Y., et al. Submitted (JUL-2006) to the EMBL/GenBank/DDBJ databases.  
Hillier L.W., et al. Nature 434:724-731(2005).  
Mural R.J., et al. Submitted (SEP-2005) to the EMBL/GenBank/DDBJ databases.  
Mishra V.S., et al. Genomics 23:560-565(1994).