

MARCH3 Antibody (aa111-160)
Rabbit Polyclonal Antibody
Catalog # ALS15912

Specification

MARCH3 Antibody (aa111-160) - Product Information

Application	WB, IHC-P, E
Primary Accession	Q86UD3
Reactivity	Human, Mouse, Rat
Host	Rabbit
Clonality	Polyclonal
Calculated MW	29kDa KDa
Dilution	WB~~1:1000 IHC-P~~N/A E~~N/A

MARCH3 Antibody (aa111-160) - Additional Information

Gene ID 115123

Other Names

E3 ubiquitin-protein ligase MARCH3, 6.3.2.-, Membrane-associated RING finger protein 3, Membrane-associated RING-CH protein III, MARCH-III, RING finger protein 173, MARCH3, RNF173

Target/Specificity

MARCH3 Antibody detects endogenous levels of total MARCH3 protein.

Reconstitution & Storage

Store at -20°C for up to one year.

Precautions

MARCH3 Antibody (aa111-160) is for research use only and not for use in diagnostic or therapeutic procedures.

MARCH3 Antibody (aa111-160) - Protein Information

Name MARCHF3 ([HGNC:28728](#))

Synonyms MARCH3, RNF173

Function

E3 ubiquitin-protein ligase which may be involved in endosomal trafficking. E3 ubiquitin ligases accept ubiquitin from an E2 ubiquitin-conjugating enzyme in the form of a thioester and then directly transfer the ubiquitin to targeted substrates.

Cellular Location

Cytoplasmic vesicle membrane; Multi-pass membrane protein. Early endosome membrane; Multi-pass membrane protein

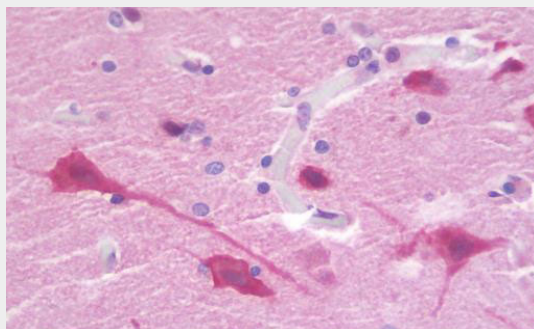
Volume
50 μ l

MARCH3 Antibody (aa111-160) - Protocols

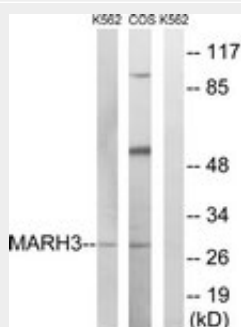
Provided below are standard protocols that you may find useful for product applications.

- [Western Blot](#)
- [Blocking Peptides](#)
- [Dot Blot](#)
- [Immunohistochemistry](#)
- [Immunofluorescence](#)
- [Immunoprecipitation](#)
- [Flow Cytometry](#)
- [Cell Culture](#)

MARCH3 Antibody (aa111-160) - Images



Anti-MARCH3 antibody IHC staining of human brain, cortex.



Western blot of extracts from K562/COS7 cells, using MARCH3 Antibody.

MARCH3 Antibody (aa111-160) - Background

E3 ubiquitin-protein ligase which may be involved in endosomal trafficking. E3 ubiquitin ligases accept ubiquitin from an E2 ubiquitin-conjugating enzyme in the form of a thioester and then directly transfer the ubiquitin to targeted substrates (By similarity).

MARCH3 Antibody (aa111-160) - References

- Ota T., et al. Nat. Genet. 36:40-45(2004).
Schmutz J., et al. Nature 431:268-274(2004).
Mural R.J., et al. Submitted (SEP-2005) to the EMBL/GenBank/DDBJ databases.

Fukuda H., et al. J. Biochem. 139:137-145(2006).