

SYNE3 / C14orf49 Antibody (aa169-218)
Rabbit Polyclonal Antibody
Catalog # ALS15935**Specification**

SYNE3 / C14orf49 Antibody (aa169-218) - Product Information

| | |
|-------------------|------------------------------------|
| Application | WB, IHC-P, E |
| Primary Accession | Q6ZMZ3 |
| Reactivity | Human, Mouse |
| Host | Rabbit |
| Clonality | Polyclonal |
| Calculated MW | 112kDa KDa |
| Dilution | WB~~1:1000 IHC-P~~N/A E~~N/A |

SYNE3 / C14orf49 Antibody (aa169-218) - Additional Information**Gene ID** 161176**Other Names**

Nesprin-3, Nuclear envelope spectrin repeat protein 3, SYNE3, C14orf49

Target/Specificity

C14orf49 Antibody detects endogenous levels of total C14orf49 protein.

Reconstitution & Storage

Store at -20°C for up to one year.

Precautions

SYNE3 / C14orf49 Antibody (aa169-218) is for research use only and not for use in diagnostic or therapeutic procedures.

SYNE3 / C14orf49 Antibody (aa169-218) - Protein Information**Name** SYNE3 ([HGNC:19861](#))**Function**

As a component of the LINC (Linker of Nucleoskeleton and Cytoskeleton) complex involved in the connection between the nuclear lamina and the cytoskeleton. The nucleocytoplasmic interactions established by the LINC complex play an important role in the transmission of mechanical forces across the nuclear envelope and in nuclear movement and positioning. Probable anchoring protein which tethers the nucleus to the cytoskeleton by binding PLEC which can associate with the intermediate filament system. Plays a role in the regulation of aortic epithelial cell morphology, and is required for flow-induced centrosome polarization and directional migration in aortic endothelial cells.

Cellular Location

Nucleus outer membrane; Single-pass type IV membrane protein. Nucleus envelope. Rough endoplasmic reticulum

Tissue Location

Expressed in aortic endothelial cells (at protein level).

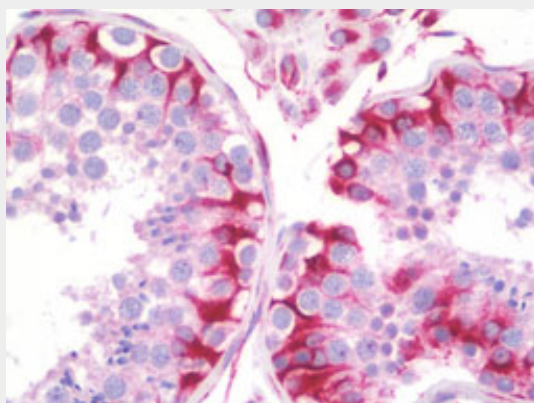
Volume

50 μ l

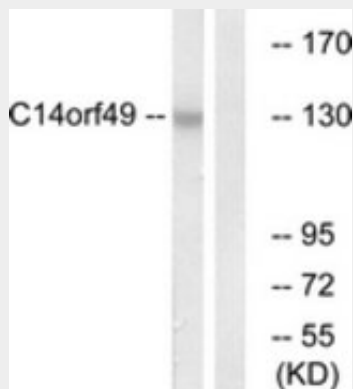
SYNE3 / C14orf49 Antibody (aa169-218) - Protocols

Provided below are standard protocols that you may find useful for product applications.

- [Western Blot](#)
- [Blocking Peptides](#)
- [Dot Blot](#)
- [Immunohistochemistry](#)
- [Immunofluorescence](#)
- [Immunoprecipitation](#)
- [Flow Cytometry](#)
- [Cell Culture](#)

SYNE3 / C14orf49 Antibody (aa169-218) - Images

Anti-SYNE3 / C14orf49 antibody IHC staining of human testis.



Western blot of extracts from Jurkat cells, using C14orf49 Antibody.

SYNE3 / C14orf49 Antibody (aa169-218) - Background

Component of SUN-protein-containing multivariate complexes also called LINC complexes which link the nucleoskeleton and cytoskeleton by providing versatile outer nuclear membrane attachment sites for cytoskeletal filaments. Involved in the maintenance of nuclear organization and structural integrity. Probable anchoring protein which tethers the nucleus to the cytoskeleton by binding PLEC which can associate with the intermediate filament system. Plays a role in the regulation of aortic epithelial cell morphology, and is required for flow- induced centrosome polarization and directional migration in aortic endothelial cells.

SYNE3 / C14orf49 Antibody (aa169-218) - References

Li W.B.,et al.Submitted (FEB-2003) to the EMBL/GenBank/DDBJ databases.
Heilig R.,et al.Nature 421:601-607(2003).
Ota T.,et al.Nat. Genet. 36:40-45(2004).
Wilhelmsen K.,et al.J. Cell Biol. 171:799-810(2005).
Stewart-Hutchinson P.J.,et al.Exp. Cell Res. 314:1892-1905(2008).