

**MAPRE2 / EB2 Antibody (clone 1F3)**  
**Mouse Monoclonal Antibody**  
**Catalog # ALS15967****Specification**

---

**MAPRE2 / EB2 Antibody (clone 1F3) - Product Information**

Application	WB, IHC-P, IF, FC
Primary Accession	<a href="#">Q15555</a>
Reactivity	Human
Host	Mouse
Clonality	Monoclonal
Calculated MW	37kDa KDa
Dilution	WB~~1:1000
	IHC-P~~N/A
	IF~~1:50~200
	FC~~1:10~50

**MAPRE2 / EB2 Antibody (clone 1F3) - Additional Information****Gene ID** 10982**Other Names**

Microtubule-associated protein RP/EB family member 2, APC-binding protein EB2, End-binding protein 2, EB2, MAPRE2, RP1

**Target/Specificity**

Human MAPRE2 / EB2

**Reconstitution & Storage**

Store at -20°C. Minimize freezing and thawing.

**Precautions**

MAPRE2 / EB2 Antibody (clone 1F3) is for research use only and not for use in diagnostic or therapeutic procedures.

**MAPRE2 / EB2 Antibody (clone 1F3) - Protein Information****Name** MAPRE2**Synonyms** RP1**Function**

Adapter protein that is involved in microtubule polymerization, and spindle function by stabilizing microtubules and anchoring them at centrosomes. Therefore, ensures mitotic progression and genome stability (PubMed:<a href="http://www.uniprot.org/citations/27030108" target="\_blank">27030108</a>). Acts as a central regulator of microtubule reorganization in apico-basal epithelial differentiation (By similarity). Plays a role during oocyte meiosis by regulating microtubule dynamics (By similarity). Participates in neurite growth by interacting with

plexin B3/PLXNB3 and microtubule reorganization during apico-basal epithelial differentiation (PubMed:<a href="http://www.uniprot.org/citations/22373814" target="\_blank">22373814</a>). Also plays an essential role for cell migration and focal adhesion dynamics. Mechanistically, recruits HAX1 to microtubules in order to regulate focal adhesion dynamics (PubMed:<a href="http://www.uniprot.org/citations/26527684" target="\_blank">26527684</a>).

**Cellular Location**

Cytoplasm, cytoskeleton. Note=Associated with the microtubule network. Accumulates at the plus end of microtubules

**Tissue Location**

Expressed in different tumor cell lines. Up- regulated in activated B- and T-lymphocytes

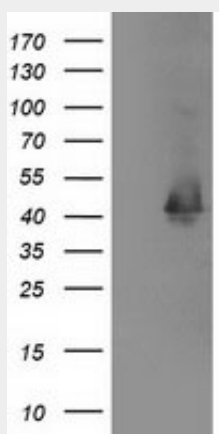
**Volume**

50 µl

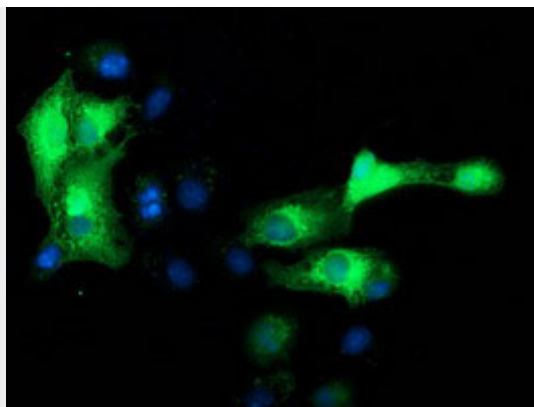
**MAPRE2 / EB2 Antibody (clone 1F3) - Protocols**

Provided below are standard protocols that you may find useful for product applications.

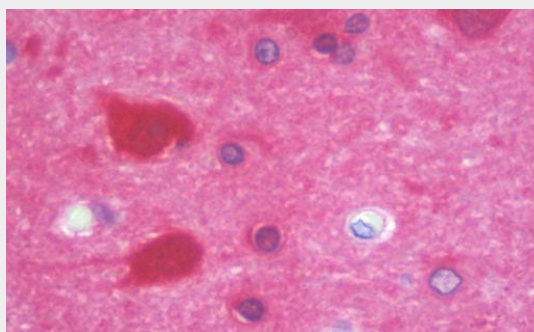
- [Western Blot](#)
- [Blocking Peptides](#)
- [Dot Blot](#)
- [Immunohistochemistry](#)
- [Immunofluorescence](#)
- [Immunoprecipitation](#)
- [Flow Cytometry](#)
- [Cell Culture](#)

**MAPRE2 / EB2 Antibody (clone 1F3) - Images**

HEK293T cells were transfected with the pCMV6-ENTRY control (Left lane) or pCMV6-ENTRY MAPRE2...



Anti-MAPRE2 mouse monoclonal antibody immunofluorescent staining of COS7 cells transiently...



Anti-MAPRE2 / EB2 antibody IHC staining of human brain, cortex.

#### **MAPRE2 / EB2 Antibody (clone 1F3) - Background**

May be involved in microtubule polymerization, and spindle function by stabilizing microtubules and anchoring them at centrosomes. May play a role in cell migration (By similarity).

#### **MAPRE2 / EB2 Antibody (clone 1F3) - References**

- Renner C.,et al.J. Immunol. 159:1276-1283(1997).  
Oishi N.,et al.Submitted (AUG-1998) to the EMBL/GenBank/DDBJ databases.  
Halleck A.,et al.Submitted (JUN-2004) to the EMBL/GenBank/DDBJ databases.  
Kalnine N.,et al.Submitted (OCT-2004) to the EMBL/GenBank/DDBJ databases.  
Ota T.,et al.Nat. Genet. 36:40-45(2004).