

CD22 Antibody (clone 1B1)
Mouse Monoclonal Antibody
Catalog # ALS15976**Specification**

CD22 Antibody (clone 1B1) - Product Information

Application	WB, IF, IHC
Primary Accession	P20273
Reactivity	Human
Host	Mouse
Clonality	Monoclonal
Calculated MW	95kDa KDa

CD22 Antibody (clone 1B1) - Additional Information**Gene ID** 933**Other Names**

B-cell receptor CD22, B-lymphocyte cell adhesion molecule, BL-CAM, Sialic acid-binding Ig-like lectin 2, Siglec-2, T-cell surface antigen Leu-14, CD22, CD22, SIGLEC2

Target/Specificity

Human CD22

Reconstitution & Storage

Store at -20°C. Minimize freezing and thawing.

Precautions

CD22 Antibody (clone 1B1) is for research use only and not for use in diagnostic or therapeutic procedures.

CD22 Antibody (clone 1B1) - Protein Information**Name** CD22 {ECO:0000303|PubMed:1691828, ECO:0000312|HGNC:HGNC:1643}**Function**

Mediates B-cell B-cell interactions. May be involved in the localization of B-cells in lymphoid tissues. Binds sialylated glycoproteins; one of which is CD45. Preferentially binds to alpha-2,6-linked sialic acid. The sialic acid recognition site can be masked by cis interactions with sialic acids on the same cell surface. Upon ligand induced tyrosine phosphorylation in the immune response seems to be involved in regulation of B-cell antigen receptor signaling. Plays a role in positive regulation through interaction with Src family tyrosine kinases and may also act as an inhibitory receptor by recruiting cytoplasmic phosphatases via their SH2 domains that block signal transduction through dephosphorylation of signaling molecules.

Cellular Location

Cell membrane; Single-pass type I membrane protein

Tissue Location

B-lymphocytes.

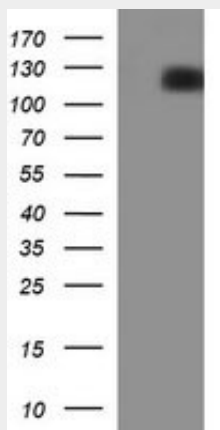
Volume

50 μ l

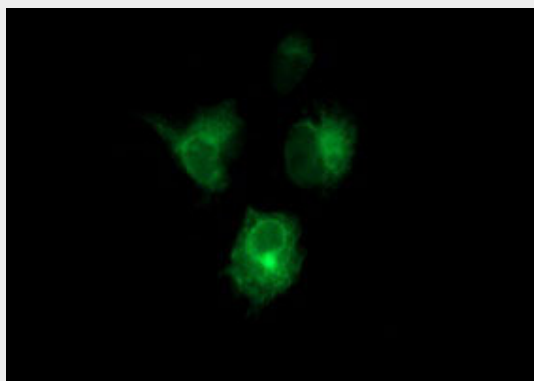
CD22 Antibody (clone 1B1) - Protocols

Provided below are standard protocols that you may find useful for product applications.

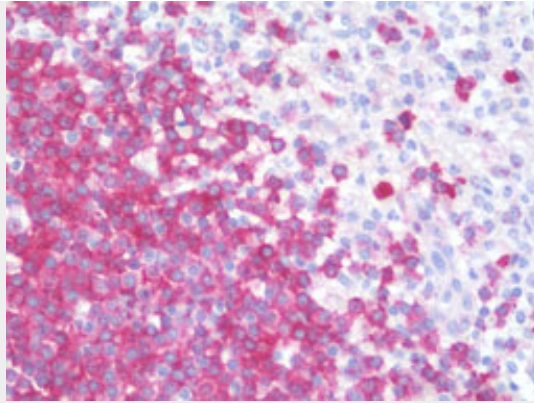
- [Western Blot](#)
- [Blocking Peptides](#)
- [Dot Blot](#)
- [Immunohistochemistry](#)
- [Immunofluorescence](#)
- [Immunoprecipitation](#)
- [Flow Cytometry](#)
- [Cell Culture](#)

CD22 Antibody (clone 1B1) - Images

HEK293T cells were transfected with the pCMV6-ENTRY control (Left lane) or pCMV6-ENTRY CD22...



Anti-CD22 mouse monoclonal antibody immunofluorescent staining of COS7 cells transiently...



Anti-CD22 antibody IHC staining of human spleen.

CD22 Antibody (clone 1B1) - Background

Mediates B-cell B-cell interactions. May be involved in the localization of B-cells in lymphoid tissues. Binds sialylated glycoproteins; one of which is CD45. Preferentially binds to alpha-2,6-linked sialic acid. The sialic acid recognition site can be masked by cis interactions with sialic acids on the same cell surface. Upon ligand induced tyrosine phosphorylation in the immune response seems to be involved in regulation of B-cell antigen receptor signaling. Plays a role in positive regulation through interaction with Src family tyrosine kinases and may also act as an inhibitory receptor by recruiting cytoplasmic phosphatases via their SH2 domains that block signal transduction through dephosphorylation of signaling molecules.

CD22 Antibody (clone 1B1) - References

Stamenkovic I.,et al.Nature 345:74-77(1990).
Wilson G.L.,et al.J. Exp. Med. 173:137-146(1991).
Wilson G.L.,et al.J. Immunol. 150:5013-5024(1993).
Suzuki Y.,et al.Submitted (JUL-2006) to the EMBL/GenBank/DDBJ databases.
Grimwood J.,et al.Nature 428:529-535(2004).