

**CSNK1G1 / CKI-Gamma 1 Antibody (aa1-50)**  
**Rabbit Polyclonal Antibody**  
**Catalog # ALS15980**

**Specification**

---

**CSNK1G1 / CKI-Gamma 1 Antibody (aa1-50) - Product Information**

Application	IHC, WB
Primary Accession	<a href="#">O9HCP0</a>
Reactivity	Human, Mouse, Rat
Host	Rabbit
Clonality	Polyclonal
Calculated MW	49kDa KDa

**CSNK1G1 / CKI-Gamma 1 Antibody (aa1-50) - Additional Information**

**Gene ID** 53944

**Other Names**

Casein kinase I isoform gamma-1, CKI-gamma 1, 2.7.11.1, CSNK1G1

**Target/Specificity**

CKI-gamma1 Antibody detects endogenous levels of total CKI-gamma1 protein.

**Reconstitution & Storage**

Store at -20°C for up to one year.

**Precautions**

CSNK1G1 / CKI-Gamma 1 Antibody (aa1-50) is for research use only and not for use in diagnostic or therapeutic procedures.

**CSNK1G1 / CKI-Gamma 1 Antibody (aa1-50) - Protein Information**

**Name** CSNK1G1

**Function**

Serine/threonine-protein kinase. Casein kinases are operationally defined by their preferential utilization of acidic proteins such as caseins as substrates. It can phosphorylate a large number of proteins. Participates in Wnt signaling. Regulates fast synaptic transmission mediated by glutamate (By similarity). Phosphorylates CLSPN.

**Cellular Location**

Cytoplasm.

**Volume**

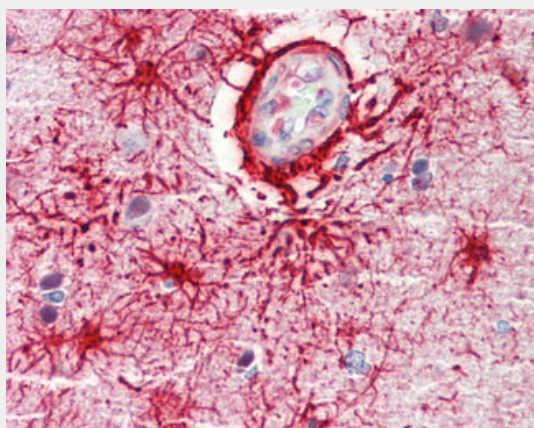
50 µl

## CSNK1G1 / CKI-Gamma 1 Antibody (aa1-50) - Protocols

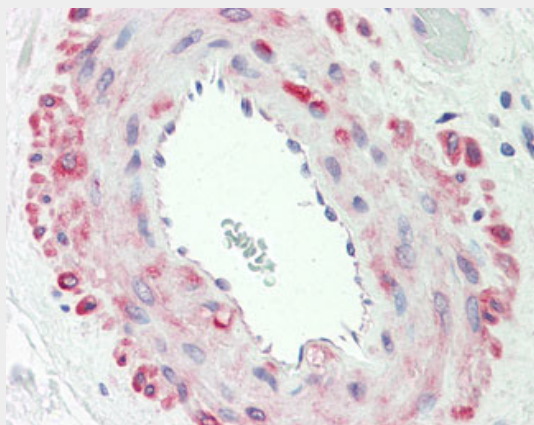
Provided below are standard protocols that you may find useful for product applications.

- [Western Blot](#)
- [Blocking Peptides](#)
- [Dot Blot](#)
- [Immunohistochemistry](#)
- [Immunofluorescence](#)
- [Immunoprecipitation](#)
- [Flow Cytometry](#)
- [Cell Culture](#)

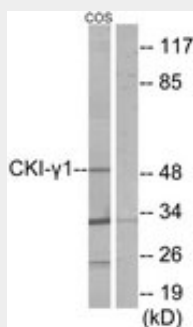
## CSNK1G1 / CKI-Gamma 1 Antibody (aa1-50) - Images



Anti-CSNK1G1 / CKI-Gamma 1 antibody IHC staining of human brain, cortex.



Anti-CSNK1G1 / CKI-Gamma 1 antibody IHC staining of human vessel.



Western blot of extracts from COS7 cells, using CKI-gamma1 Antibody.

### **CSNK1G1 / CKI-Gamma 1 Antibody (aa1-50) - Background**

Serine/threonine-protein kinase. Casein kinases are operationally defined by their preferential utilization of acidic proteins such as caseins as substrates. It can phosphorylate a large number of proteins. Participates in Wnt signaling. Regulates fast synaptic transmission mediated by glutamate (By similarity). Phosphorylates CLSPN.

### **CSNK1G1 / CKI-Gamma 1 Antibody (aa1-50) - References**

Kusuda J.,et al.Cytogenet. Cell Genet. 90:298-302(2000).  
Bechtel S.,et al.BMC Genomics 8:399-399(2007).  
Mural R.J.,et al.Submitted (SEP-2005) to the EMBL/GenBank/DDBJ databases.  
Hillman R.T.,et al.Genome Biol. 5:R8.1-R8.16(2004).  
Meng Z.,et al.Mol. Biol. Cell 22:2834-2847(2011).