

**ADD3 Antibody (aa431-480)**  
**Rabbit Polyclonal Antibody**  
**Catalog # ALS15982****Specification**

---

**ADD3 Antibody (aa431-480) - Product Information**

Application	WB, IHC-P, E
Primary Accession	<a href="#">O9UEY8</a>
Reactivity	Human, Mouse, Rat
Host	Rabbit
Clonality	Polyclonal
Calculated MW	79kDa KDa
Dilution	WB~~1:1000 IHC-P~~N/A E~~N/A

**ADD3 Antibody (aa431-480) - Additional Information****Gene ID** 120**Other Names**

Gamma-adducin, Adducin-like protein 70, ADD3, ADDL

**Target/Specificity**

ADD3 Antibody detects endogenous levels of total ADD3 protein.

**Reconstitution & Storage**

Store at -20°C for up to one year.

**Precautions**

ADD3 Antibody (aa431-480) is for research use only and not for use in diagnostic or therapeutic procedures.

**ADD3 Antibody (aa431-480) - Protein Information****Name** ADD3**Synonyms** ADDL**Function**

Membrane-cytoskeleton-associated protein that promotes the assembly of the spectrin-actin network. Plays a role in actin filament capping (PubMed:<a href="http://www.uniprot.org/citations/23836506" target="\_blank">23836506</a>). Binds to calmodulin (Probable). Involved in myogenic reactivity of the renal afferent arteriole (Af-art), renal interlobular arteries and middle cerebral artery (MCA) to increased perfusion pressure. Involved in regulation of potassium channels in the vascular smooth muscle cells (VSMCs) of the Af-art and MCA ex vivo. Involved in regulation of glomerular capillary pressure, glomerular filtration rate (GFR) and glomerular nephrin expression in response to hypertension. Involved in renal blood flow

(RBF) autoregulation. Plays a role in podocyte structure and function. Regulates globular monomer actin (G-actin) and filamentous polymer actin (F-actin) ratios in the primary podocytes affecting actin cytoskeleton organization. Regulates expression of synaptopodin, RhoA, Rac1 and CDC42 in the renal cortex and the primary podocytes. Regulates expression of nephrin in the glomeruli and in the primary podocytes, expression of nephrin and podocin in the renal cortex, and expression of focal adhesion proteins integrin alpha-3 and integrin beta-1 in the glomeruli. Involved in cell migration and cell adhesion of podocytes, and in podocyte foot process effacement. Regulates expression of profibrotic markers MMP2, MMP9, TGF beta-1, tubular tight junction protein E-cadherin, and mesenchymal markers vimentin and alpha-SMA (By similarity). Promotes the growth of neurites (By similarity).

#### Cellular Location

Cytoplasm, cytoskeleton {ECO:0000250|UniProtKB:Q62847}. Cell membrane {ECO:0000250|UniProtKB:Q62847}; Peripheral membrane protein; Cytoplasmic side. Cytoplasm {ECO:0000250|UniProtKB:Q9QYB5}. Note=Full-length protein and the cleavage fragment 358-706 localize mainly to the cytoplasm, while cleavage fragment 1-357 translocates from the cytoplasm to the nucleus. {ECO:0000250|UniProtKB:Q9QYB5}

#### Tissue Location

[Isoform 1]: ubiquitously expressed.

#### Volume

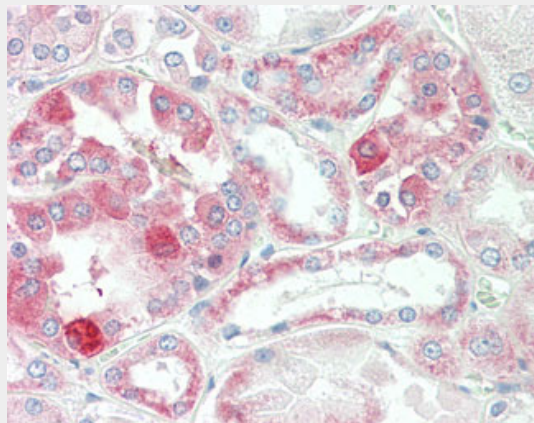
50 µl

#### ADD3 Antibody (aa431-480) - Protocols

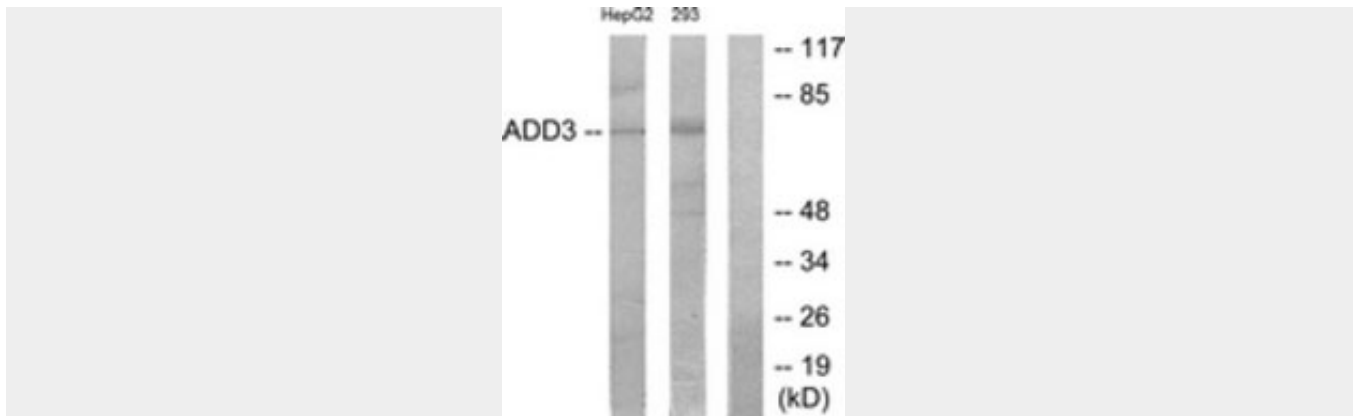
Provided below are standard protocols that you may find useful for product applications.

- [Western Blot](#)
- [Blocking Peptides](#)
- [Dot Blot](#)
- [Immunohistochemistry](#)
- [Immunofluorescence](#)
- [Immunoprecipitation](#)
- [Flow Cytometry](#)
- [Cell Culture](#)

#### ADD3 Antibody (aa431-480) - Images



Anti-ADD3 antibody IHC staining of human kidney.



Western blot of extracts from HepG2/293 cells, using ADD3 Antibody.

#### **ADD3 Antibody (aa431-480) - Background**

Membrane-cytoskeleton-associated protein that promotes the assembly of the spectrin-actin network. Binds to calmodulin.

#### **ADD3 Antibody (aa431-480) - References**

- Katagiri T.,et al.Cytogenet. Cell Genet. 74:90-95(1996).
- Moorthy S.,et al.Submitted (SEP-1995) to the EMBL/GenBank/DDBJ databases.
- Citterio L.,et al.Biochem. Biophys. Res. Commun. 266:110-114(1999).
- Bechtel S.,et al.BMC Genomics 8:399-399(2007).
- Deloukas P.,et al.Nature 429:375-381(2004).