

Myelin Basic Protein / MBP Antibody
Chicken Polyclonal Antibody
Catalog # ALS15984**Specification**

Myelin Basic Protein / MBP Antibody - Product Information

Application	WB, IHC-P, ICC
Primary Accession	P02686
Reactivity	Human, Mouse
Host	Chicken
Clonality	Polyclonal
Calculated MW	33kDa KDa
Dilution	WB~~1:1000 IHC-P~~N/A ICC~~N/A

Myelin Basic Protein / MBP Antibody - Additional Information**Gene ID** 4155**Other Names**

Myelin basic protein, MBP, Myelin A1 protein, Myelin membrane encephalitogenic protein, MBP

Target/Specificity

The peptide corresponded to a region of the MBP gene product shared between the human (NP_002376, NCBI) and mouse (NP_034907, NCBI) sequences.

Reconstitution & Storage

May be stored at 4°C. For long-term storage, aliquot and store at 4°C. Do not freeze. Aliquots are stable for at least 12 months. Sensitive to light.

Precautions

Myelin Basic Protein / MBP Antibody is for research use only and not for use in diagnostic or therapeutic procedures.

Myelin Basic Protein / MBP Antibody - Protein Information**Name** MBP**Function**

The classic group of MBP isoforms (isoform 4-isoform 14) are with PLP the most abundant protein components of the myelin membrane in the CNS. They have a role in both its formation and stabilization. The smaller isoforms might have an important role in remyelination of denuded axons in multiple sclerosis. The non-classic group of MBP isoforms (isoform 1-isoform 3/Golli-MBPs) may preferentially have a role in the early developing brain long before myelination, maybe as components of transcriptional complexes, and may also be involved in signaling pathways in T-cells and neural cells. Differential splicing events combined with optional post-translational modifications give a wide spectrum of isomers, with each of them potentially having a specialized

function. Induces T-cell proliferation.

Cellular Location

Myelin membrane; Peripheral membrane protein; Cytoplasmic side. Note=Cytoplasmic side of myelin

Tissue Location

MBP isoforms are found in both the central and the peripheral nervous system, whereas Golli-MBP isoforms are expressed in fetal thymus, spleen and spinal cord, as well as in cell lines derived from the immune system.

Volume

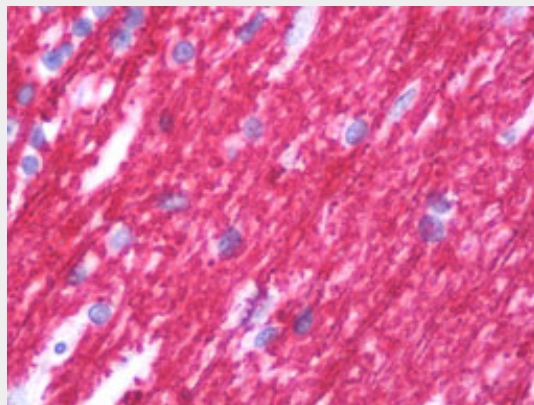
50 μ l

Myelin Basic Protein / MBP Antibody - Protocols

Provided below are standard protocols that you may find useful for product applications.

- [Western Blot](#)
- [Blocking Peptides](#)
- [Dot Blot](#)
- [Immunohistochemistry](#)
- [Immunofluorescence](#)
- [Immunoprecipitation](#)
- [Flow Cytometry](#)
- [Cell Culture](#)

Myelin Basic Protein / MBP Antibody - Images



Anti-Myelin Basic Protein / MBP antibody IHC staining of human brain, cerebellum.

Myelin Basic Protein / MBP Antibody - Background

The classic group of MBP isoforms (isoform 4-isoform 14) are with PLP the most abundant protein components of the myelin membrane in the CNS. They have a role in both its formation and stabilization. The smaller isoforms might have an important role in remyelination of denuded axons in multiple sclerosis. The non- classic group of MBP isoforms (isoform 1-isoform 3/Golli-MBPs) may preferentially have a role in the early developing brain long before myelination, maybe as components of transcriptional complexes, and may also be involved in signaling pathways in T-cells and neural cells. Differential splicing events combined with optional post-translational modifications give a wide spectrum of isomers, with each of them potentially having a specialized

function. Induces T-cell proliferation.

Myelin Basic Protein / MBP Antibody - References

Carnegie P.R.,et al.Biochem. J. 123:57-67(1971).
Roth H.J.,et al.J. Neurosci. Res. 16:227-238(1986).
Kamholz J.,et al.Proc. Natl. Acad. Sci. U.S.A. 83:4962-4966(1986).
Roth H.J.,et al.J. Neurosci. Res. 17:321-328(1987).
Streicher R.,et al.Biol. Chem. Hoppe-Seyler 370:503-510(1989).