

HAND1 Antibody (clone 1G10)
Mouse Monoclonal Antibody
Catalog # ALS15986**Specification**

HAND1 Antibody (clone 1G10) - Product Information

Application	WB, IF, IHC
Primary Accession	O96004
Reactivity	Human
Host	Mouse
Clonality	Monoclonal
Calculated MW	24kDa KDa

HAND1 Antibody (clone 1G10) - Additional Information**Gene ID** 9421**Other Names**

Heart- and neural crest derivatives-expressed protein 1, Class A basic helix-loop-helix protein 27, bHLHa27, Extraembryonic tissues, heart, autonomic nervous system and neural crest derivatives-expressed protein 1, eHAND, HAND1, BHLHA27, EHAND

Target/Specificity

Human HAND1

Reconstitution & Storage

Store at -20°C. Minimize freezing and thawing.

Precautions

HAND1 Antibody (clone 1G10) is for research use only and not for use in diagnostic or therapeutic procedures.

HAND1 Antibody (clone 1G10) - Protein Information**Name** HAND1**Synonyms** BHLHA27, EHAND**Function**

Transcription factor that plays an essential role in both trophoblast giant cell differentiation and in cardiac morphogenesis (By similarity). Binds the DNA sequence 5'-NRTCTG-3' (non-canonical E-box) (By similarity). Acts as a transcriptional repressor of SOX15 (By similarity). In the adult, could be required for ongoing expression of cardiac-specific genes (PubMed:9931445).

Cellular Location

Nucleus, nucleoplasm. Nucleus, nucleolus. Note=Interaction with MDFIC sequesters it into the nucleolus, preventing the transcription factor activity Phosphorylation by PLK4 disrupts the

interaction with MDFIC and releases it from the nucleolus, leading to transcription factor activity (By similarity).

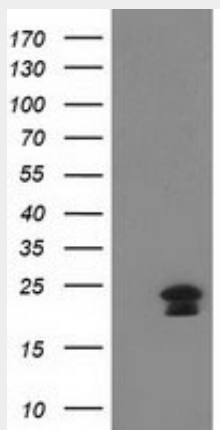
Tissue Location

Heart.

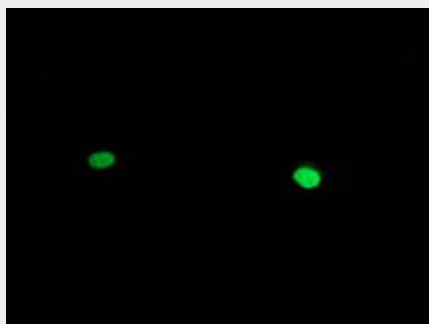
HAND1 Antibody (clone 1G10) - Protocols

Provided below are standard protocols that you may find useful for product applications.

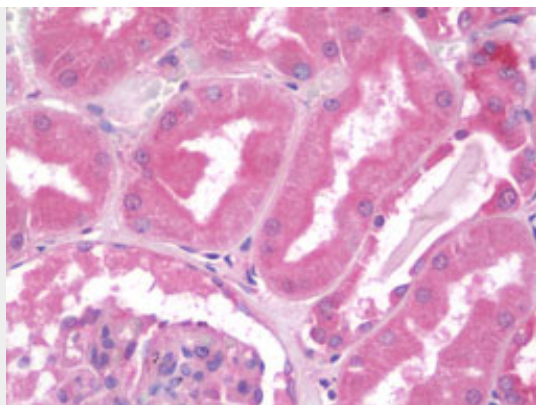
- [Western Blot](#)
- [Blocking Peptides](#)
- [Dot Blot](#)
- [Immunohistochemistry](#)
- [Immunofluorescence](#)
- [Immunoprecipitation](#)
- [Flow Cytometry](#)
- [Cell Culture](#)

HAND1 Antibody (clone 1G10) - Images

HEK293T cells were transfected with the pCMV6-ENTRY control (Left lane) or pCMV6-ENTRY HAND1...



Anti-HAND1 mouse monoclonal antibody immunofluorescent staining of COS7 cells transiently...



Anti-HAND1 antibody IHC staining of human kidney.

HAND1 Antibody (clone 1G10) - Background

Transcription factor that plays an essential role in both trophoblast-giant cells differentiation and in cardiac morphogenesis. In the adult, could be required for ongoing expression of cardiac-specific genes. Binds the DNA sequence 5'- NRTCTG-3' (non-canonical E-box) (By similarity).

HAND1 Antibody (clone 1G10) - References

Knoefler M., et al. Gene 224:77-86(1998).