

RTN4RL2 Antibody (C-Terminus)
Rabbit Polyclonal Antibody
Catalog # ALS16002**Specification**

RTN4RL2 Antibody (C-Terminus) - Product Information

Application	WB, IHC
Primary Accession	Q86UN3
Reactivity	Human
Host	Rabbit
Clonality	Polyclonal
Calculated MW	46kDa KDa

RTN4RL2 Antibody (C-Terminus) - Additional Information**Gene ID** 349667**Other Names**

Reticulon-4 receptor-like 2, Nogo receptor-like 3, Nogo-66 receptor homolog 1, Nogo-66 receptor-related protein 2, NgR2, RTN4RL2 (HGNC:23053)

Target/Specificity

Three alternatively spliced transcript variants have been observed. RTN4RL2 antibody is predicted to not cross-react with other Nogo receptor-like proteins.

Reconstitution & Storage

Long term: -20°C; Short term: +4°C. Avoid repeat freeze-thaw cycles.

Precautions

RTN4RL2 Antibody (C-Terminus) is for research use only and not for use in diagnostic or therapeutic procedures.

RTN4RL2 Antibody (C-Terminus) - Protein Information**Name** RTN4RL2 ([HGNC:23053](#))**Function**

Cell surface receptor that plays a functionally redundant role in the inhibition of neurite outgrowth mediated by MAG (By similarity). Plays a functionally redundant role in postnatal brain development. Contributes to normal axon migration across the brain midline and normal formation of the corpus callosum. Does not seem to play a significant role in regulating axon regeneration in the adult central nervous system. Protects motoneurons against apoptosis; protection against apoptosis is probably mediated by MAG (By similarity). Like other family members, plays a role in restricting the number dendritic spines and the number of synapses that are formed during brain development (PubMed:22325200). Signaling mediates activation of Rho and downstream

reorganization of the actin cytoskeleton (PubMed:22325200).

Cellular Location

Cell membrane; Lipid-anchor, GPI-anchor. Membrane raft. Cell projection, dendrite {ECO:0000250|UniProtKB:Q7M6Z0}. Perikaryon {ECO:0000250|UniProtKB:Q80WD1}. Cell projection, axon {ECO:0000250|UniProtKB:Q80WD1}. Note=Localized to the surface of neurons, including axons. Detected close to synapses, but is excluded from synapses. {ECO:0000250|UniProtKB:Q7M6Z0}

Tissue Location

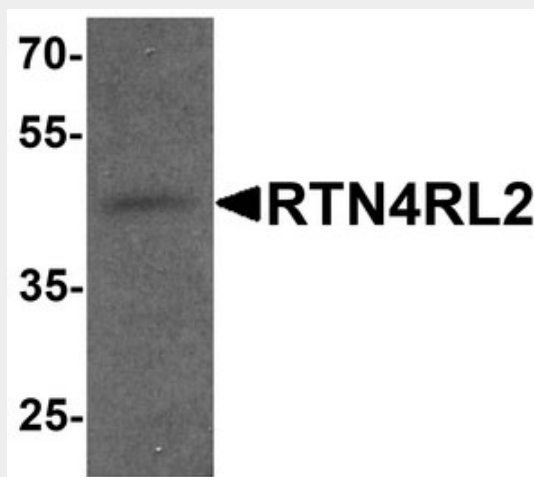
Highly expressed in brain and liver. Expressed at lower levels in kidney, mammary gland, placenta, skeletal muscle, spleen and thyroid.

RTN4RL2 Antibody (C-Terminus) - Protocols

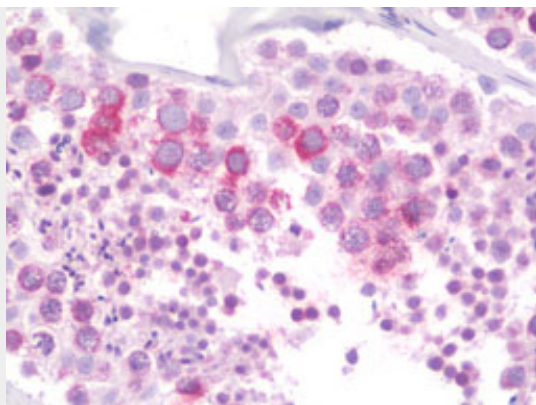
Provided below are standard protocols that you may find useful for product applications.

- [Western Blot](#)
- [Blocking Peptides](#)
- [Dot Blot](#)
- [Immunohistochemistry](#)
- [Immunofluorescence](#)
- [Immunoprecipitation](#)
- [Flow Cytometry](#)
- [Cell Culture](#)

RTN4RL2 Antibody (C-Terminus) - Images



Western blot analysis of RTN4RL2 in rat brain tissue lysate with RTN4RL2 antibody at 1 ug/ml.



Anti-RTN4RL2 antibody IHC staining of human testis.

RTN4RL2 Antibody (C-Terminus) - Background

May play a role in regulating axonal regeneration and plasticity in the adult central nervous system.

RTN4RL2 Antibody (C-Terminus) - References

Pignot V.,et al.J. Neurochem. 85:717-728(2003).
Lauren J.,et al.Mol. Cell. Neurosci. 24:581-594(2003).
Rader C.,et al.Submitted (JUL-2006) to the EMBL/GenBank/DDBJ databases.
Taylor T.D.,et al.Nature 440:497-500(2006).
Barton W.A.,et al.EMBO J. 22:3291-3302(2003).