

IL15 Antibody (Internal)
Rabbit Polyclonal Antibody
Catalog # ALS16010**Specification**

IL15 Antibody (Internal) - Product Information

Application	WB, IHC
Primary Accession	P40933
Reactivity	Human, Mouse, Rat
Host	Rabbit
Clonality	Polyclonal
Calculated MW	18kDa KDa

IL15 Antibody (Internal) - Additional Information**Gene ID** 3600**Other Names**

Interleukin-15, IL-15, IL15

Target/Specificity

At least two isoforms of IL-15 are known to exist.

Reconstitution & Storage

Long term: -20°C; Short term: +4°C. Avoid repeat freeze-thaw cycles.

Precautions

IL15 Antibody (Internal) is for research use only and not for use in diagnostic or therapeutic procedures.

IL15 Antibody (Internal) - Protein Information**Name** IL15**Function**

Cytokine that plays a major role in the development of inflammatory and protective immune responses to microbial invaders and parasites by modulating immune cells of both the innate and adaptive immune systems (PubMed:[15123770](http://www.uniprot.org/citations/15123770)). Stimulates the proliferation of natural killer cells, T-cells and B-cells and promotes the secretion of several cytokines (PubMed:[8178155](http://www.uniprot.org/citations/8178155), PubMed:[9326248](http://www.uniprot.org/citations/9326248)). In monocytes, induces the production of IL8 and monocyte chemotactic protein 1/CCL2, two chemokines that attract neutrophils and monocytes respectively to sites of infection (PubMed:[9326248](http://www.uniprot.org/citations/9326248)). Unlike most cytokines, which are secreted in soluble form, IL15 is expressed in association with its high affinity IL15RA on the surface of IL15-producing cells and delivers signals to target cells that express IL2RB and IL2RG receptor subunits (PubMed:[8026467](http://www.uniprot.org/citations/8026467)).

target="_blank">8026467, PubMed:23104097, PubMed:10233906). Binding to its receptor triggers the phosphorylation of JAK1 and JAK3 and the recruitment and subsequent phosphorylation of signal transducer and activator of transcription-3/STAT3 and STAT5 (PubMed:7568001). In mast cells, induces the rapid tyrosine phosphorylation of STAT6 and thereby controls mast cell survival and release of cytokines such as IL4 (By similarity).

Cellular Location

[Isoform IL15-S48AA]: Secreted.

Tissue Location

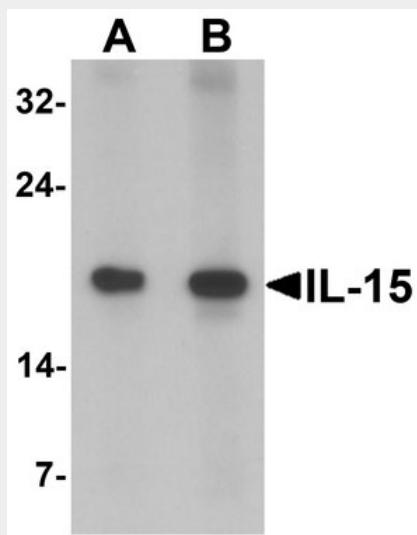
Most abundant in placenta and skeletal muscle. It is also detected in the heart, lung, liver and kidney. IL15-S21AA is preferentially expressed in tissues such as testis and thymus

IL15 Antibody (Internal) - Protocols

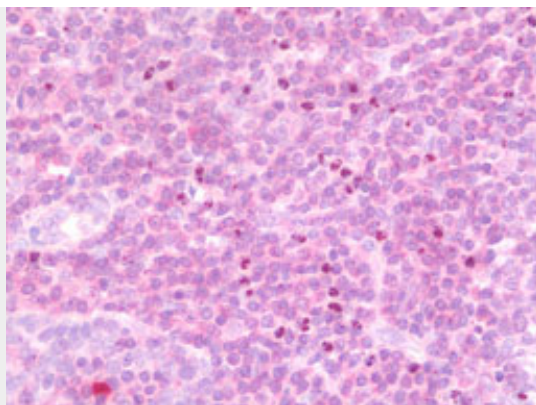
Provided below are standard protocols that you may find useful for product applications.

- [Western Blot](#)
- [Blocking Peptides](#)
- [Dot Blot](#)
- [Immunohistochemistry](#)
- [Immunofluorescence](#)
- [Immunoprecipitation](#)
- [Flow Cytometry](#)
- [Cell Culture](#)

IL15 Antibody (Internal) - Images



Western blot analysis of IL-15 in rat spleen tissue lysate with IL-15 antibody at (A) 1 and (B)...



Anti-IL15 antibody IHC staining of human tonsil.

IL15 Antibody (Internal) - Background

Cytokine that stimulates the proliferation of T- lymphocytes. Stimulation by IL-15 requires interaction of IL-15 with components of IL-2R, including IL-2R beta and probably IL-2R gamma but not IL-2R alpha.

IL15 Antibody (Internal) - References

- Grabstein K.H.,et al.Science 264:965-968(1994).
- Krause H.,et al.Cytokine 8:667-674(1996).
- Meazza R.,et al.Oncogene 12:2187-2192(1996).
- Tagaya Y.,et al.Proc. Natl. Acad. Sci. U.S.A. 94:14444-14449(1997).
- Meazza R.,et al.Submitted (APR-1997) to the EMBL/GenBank/DDBJ databases.