

NAF-1 / CISD2 Antibody (Internal)
Rabbit Polyclonal Antibody
Catalog # ALS16018**Specification**

NAF-1 / CISD2 Antibody (Internal) - Product Information

Application	WB, IF, IHC
Primary Accession	Q8N5K1
Reactivity	Human, Mouse, Rat
Host	Rabbit
Clonality	Polyclonal
Calculated MW	15kDa KDa

NAF-1 / CISD2 Antibody (Internal) - Additional Information**Gene ID** 493856**Other Names**

CDGSH iron-sulfur domain-containing protein 2, Endoplasmic reticulum intermembrane small protein, MitoNEET-related 1 protein, Miner1, Nutrient-deprivation autophagy factor-1, NAF-1, CISD2, CDGSH2, ERIS, ZCD2

Target/Specificity

Human NAF-1 / CISD2

Reconstitution & Storage

Long term: -20°C; Short term: +4°C. Avoid repeat freeze-thaw cycles.

Precautions

NAF-1 / CISD2 Antibody (Internal) is for research use only and not for use in diagnostic or therapeutic procedures.

NAF-1 / CISD2 Antibody (Internal) - Protein Information**Name** CISD2**Synonyms** CDGSH2, ERIS, ZCD2**Function**

Regulator of autophagy that contributes to antagonize BECN1- mediated cellular autophagy at the endoplasmic reticulum. Participates in the interaction of BCL2 with BECN1 and is required for BCL2-mediated depression of endoplasmic reticulum Ca(2+) stores during autophagy. Contributes to BIK-initiated autophagy, while it is not involved in BIK-dependent activation of caspases. Involved in life span control, probably via its function as regulator of autophagy.

Cellular Location

Endoplasmic reticulum membrane; Single-pass membrane protein. Mitochondrion outer membrane; Single-pass membrane protein. Note=According to PubMed:20010695, it mainly

localizes to the endoplasmic reticulum. However, experiments in mouse showed that it mainly localizes to the mitochondrion outer membrane

Tissue Location

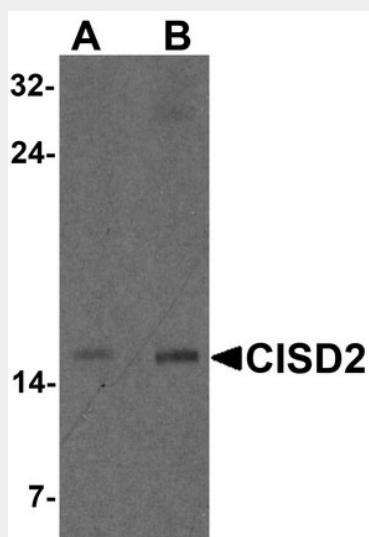
Testis, small intestine, kidney, lung, brain, heart, pancreas and platelets.

NAF-1 / CISD2 Antibody (Internal) - Protocols

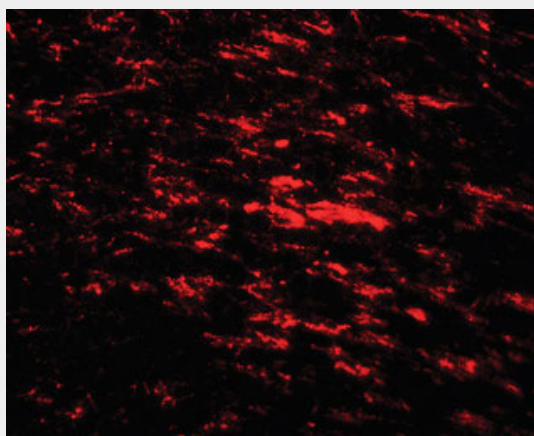
Provided below are standard protocols that you may find useful for product applications.

- [Western Blot](#)
- [Blocking Peptides](#)
- [Dot Blot](#)
- [Immunohistochemistry](#)
- [Immunofluorescence](#)
- [Immunoprecipitation](#)
- [Flow Cytometry](#)
- [Cell Culture](#)

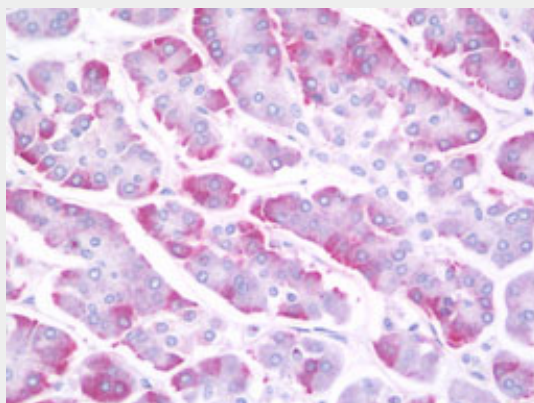
NAF-1 / CISD2 Antibody (Internal) - Images



Western blot analysis of CISD2 in rat brain tissue lysate with CISD2 antibody at (A) 1 and (B) 2...



Immunofluorescence of CISD2 in rat brain tissue with CISD2 antibody at 20 ug/ml.



Anti-NAF-1 / CISD2 antibody IHC staining of human pancreas.

NAF-1 / CISD2 Antibody (Internal) - Background

Regulator of autophagy that contributes to antagonize BECN1-mediated cellular autophagy at the endoplasmic reticulum. Participates in the interaction of BCL2 with BECN1 and is required for BCL2-mediated depression of endoplasmic reticulum Ca^{2+} stores during autophagy. Contributes to BIK-initiated autophagy, while it is not involved in BIK-dependent activation of caspases. Involved in life span control, probably via its function as regulator of autophagy.

NAF-1 / CISD2 Antibody (Internal) - References

Amr S.,et al.Am. J. Hum. Genet. 81:673-683(2007).
Ota T.,et al.Nat. Genet. 36:40-45(2004).
Bechtel S.,et al.BMC Genomics 8:399-399(2007).
Mural R.J.,et al.Submitted (JUL-2005) to the EMBL/GenBank/DDBJ databases.
Bienvenut W.V.,et al.Submitted (JUN-2005) to UniProtKB.