

BHLHA15 Antibody (Internal)
Rabbit Polyclonal Antibody
Catalog # ALS16039**Specification**

BHLHA15 Antibody (Internal) - Product Information

Application	IHC, WB
Primary Accession	Q7RTS1
Reactivity	Human, Mouse, Rat
Host	Rabbit
Clonality	Polyclonal
Calculated MW	21kDa KDa

BHLHA15 Antibody (Internal) - Additional Information**Gene ID** 168620**Other Names**

Class A basic helix-loop-helix protein 15, bHLHa15, Class B basic helix-loop-helix protein 8, bHLHb8, Muscle, intestine and stomach expression 1, MIST-1, BHLHA15, BHLHB8, MIST1

Target/Specificity

BHLHA15 antibody is human, mouse and rat reactive.

Reconstitution & Storage

Long term: -20°C; Short term: +4°C. Avoid repeat freeze-thaw cycles.

Precautions

BHLHA15 Antibody (Internal) is for research use only and not for use in diagnostic or therapeutic procedures.

BHLHA15 Antibody (Internal) - Protein Information**Name** BHLHA15**Synonyms** BHLHB8, MIST1**Function**

Plays a role in controlling the transcriptional activity of MYOD1, ensuring that expanding myoblast populations remain undifferentiated. Repression may occur through muscle-specific E-box occupancy by homodimers. May also negatively regulate bHLH-mediated transcription through an N-terminal repressor domain. Serves as a key regulator of acinar cell function, stability, and identity. Also required for normal organelle localization in exocrine cells and for mitochondrial calcium ion transport. May function as a unique regulator of gene expression in several different embryonic and postnatal cell lineages. Binds to the E-box consensus sequence 5'-CANNTG-3' (By similarity).

Cellular Location

Nucleus.

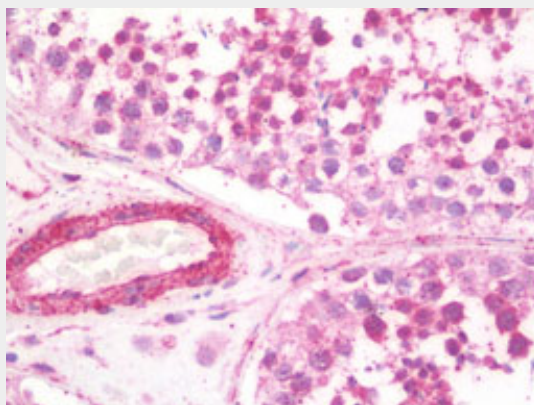
Tissue Location

Expressed in brain, liver, spleen and skeletal muscle.

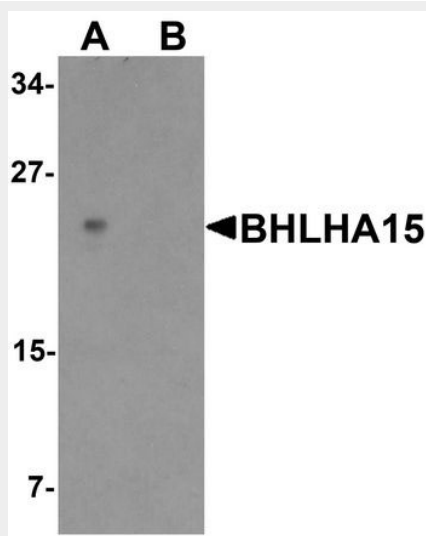
BHLHA15 Antibody (Internal) - Protocols

Provided below are standard protocols that you may find useful for product applications.

- [Western Blot](#)
- [Blocking Peptides](#)
- [Dot Blot](#)
- [Immunohistochemistry](#)
- [Immunofluorescence](#)
- [Immunoprecipitation](#)
- [Flow Cytometry](#)
- [Cell Culture](#)

BHLHA15 Antibody (Internal) - Images

Anti-BHLHA15 antibody IHC staining of human testis.



Western blot analysis of BHLHA15 in rat small Intestine tissue lysate with BHLHA15 antibody at 1...

BHLHA15 Antibody (Internal) - Background

Plays a role in controlling the transcriptional activity of MYOD1, ensuring that expanding myoblast populations remain undifferentiated. Repression may occur through muscle-specific E- box occupancy by homodimers. May also negatively regulate bHLH- mediated transcription through an N-terminal repressor domain. Serves as a key regulator of acinar cell function, stability, and identity. Also required for normal organelle localization in exocrine cells and for mitochondrial calcium ion transport. May function as a unique regulator of gene expression in several different embryonic and postnatal cell lineages. Binds to the E- box consensus sequence 5'-CANNTG-3' (By similarity).

BHLHA15 Antibody (Internal) - References

Hillier L.W.,et al.Nature 424:157-164(2003).
Scherer S.W.,et al.Science 300:767-772(2003).
McLellan A.S.,et al.Mech. Dev. 119:S285-S291(2002).
Burkard T.R.,et al.BMC Syst. Biol. 5:17-17(2011).