

**GLIPR1L1 Antibody (N-Terminus)**  
**Rabbit Polyclonal Antibody**  
**Catalog # ALS16049****Specification**

---

**GLIPR1L1 Antibody (N-Terminus) - Product Information**

Application	IF, IHC, WB
Primary Accession	<a href="#">Q6UWM5</a>
Reactivity	Human
Host	Rabbit
Clonality	Polyclonal
Calculated MW	27kDa KDa

**GLIPR1L1 Antibody (N-Terminus) - Additional Information****Gene ID** 256710**Other Names**

GLIPR1-like protein 1, GLIPR1L1

**Target/Specificity**

GLIPR1L1 antibody is human specific. At least two isoforms of GLIPR1L1 are known to exist; this antibody will detect both isoforms. This antibody is predicted to not cross-react with other GLIPR or GLIPR-like proteins.

**Reconstitution & Storage**

Long term: -20°C; Short term: +4°C. Avoid repeat freeze-thaw cycles.

**Precautions**

GLIPR1L1 Antibody (N-Terminus) is for research use only and not for use in diagnostic or therapeutic procedures.

**GLIPR1L1 Antibody (N-Terminus) - Protein Information****Name** GLIPR1L1**Function**

Required for optimal fertilization at the stage of sperm- oocyte fusion, plays a role in optimizing acrosome function, the translocation of IZUMO1 during the acrosome reaction and the fertilization process. Component of epididymosomes, one type of membranous microvesicles which mediate the transfer of lipids and proteins to spermatozoa plasma membrane during epididymal maturation. Also component of the CD9-positive microvesicles found in the cauda region.

**Cellular Location**

Cytoplasmic vesicle, secretory vesicle, acrosome {ECO:0000250|UniProtKB:Q9DAG6}. Cell membrane {ECO:0000250|UniProtKB:Q9DAG6}; Lipid-anchor, GPI-anchor; Extracellular side {ECO:0000250|UniProtKB:Q9DAG6}. Membrane raft {ECO:0000250|UniProtKB:Q32LB5}. Secreted {ECO:0000250|UniProtKB:Q9DAG6}. Note=Located in the connecting piece of elongated

spermatids and sperm. Also located in the apical region of the sperm head after sperm capacitation (By similarity). Weakly attached to the cell membrane and later secreted into the extracellular space (By similarity). Located on sperm equatorial segment and neck (By similarity). Associated with epididymosomes from the caput and cauda epididymis (By similarity). {ECO:0000250|UniProtKB:Q32LB5, ECO:0000250|UniProtKB:Q9DAG6}

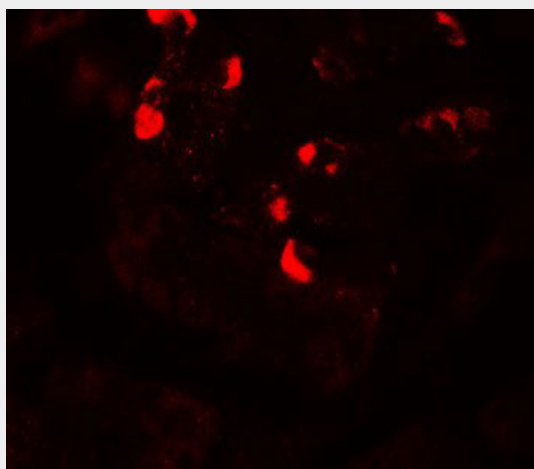
**Tissue Location**

Highly expressed in testis.

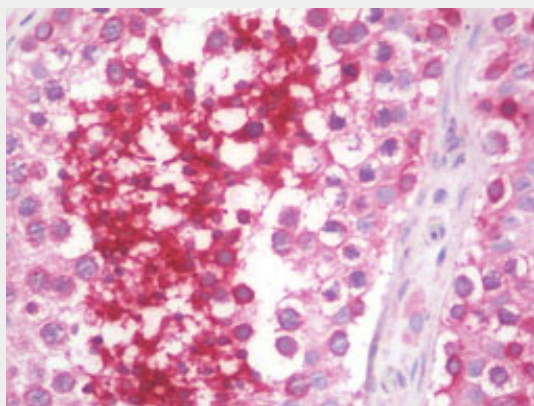
**GLIPR1L1 Antibody (N-Terminus) - Protocols**

Provided below are standard protocols that you may find useful for product applications.

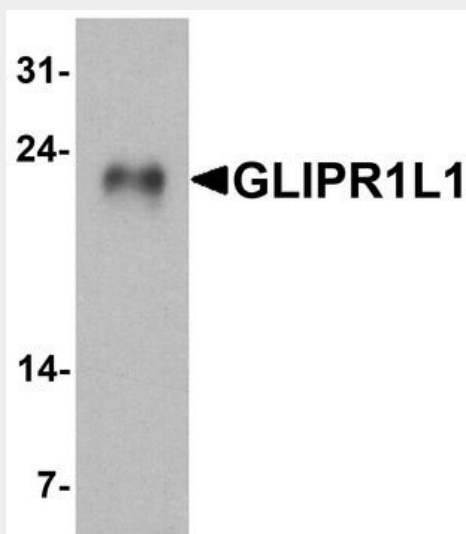
- [Western Blot](#)
- [Blocking Peptides](#)
- [Dot Blot](#)
- [Immunohistochemistry](#)
- [Immunofluorescence](#)
- [Immunoprecipitation](#)
- [Flow Cytometry](#)
- [Cell Culture](#)

**GLIPR1L1 Antibody (N-Terminus) - Images**

Immunofluorescence of GLIPR1L1 in human testis tissue with GLIPR1L1 antibody at 20 µg/mL.



Anti-GLIPR1L1 antibody IHC staining of human testis.



Western blot analysis of GLIPR1L1 in human testis tissue lysate with GLIPR1L1 antibody at 1 ug/ml.

#### **GLIPR1L1 Antibody (N-Terminus) - References**

Ren C.,et al.Genomics 88:163-172(2006).  
Clark H.F.,et al.Genome Res. 13:2265-2270(2003).  
Zhang Z.,et al.Protein Sci. 13:2819-2824(2004).