

**PRKCDBP / CAVIN3 Antibody (Internal)**  
**Rabbit Polyclonal Antibody**  
**Catalog # ALS16053****Specification**

---

**PRKCDBP / CAVIN3 Antibody (Internal) - Product Information**

Application	WB, IHC-P, IF, E
Primary Accession	<a href="#">Q969G5</a>
Reactivity	Human, Mouse
Host	Rabbit
Clonality	Polyclonal
Calculated MW	28kDa KDa
Dilution	WB~~1:1000 IHC-P~~N/A IF~~1:50~200 E~~N/A

**PRKCDBP / CAVIN3 Antibody (Internal) - Additional Information****Gene ID** 112464**Other Names**

Protein kinase C delta-binding protein, Cavin-3, Serum deprivation response factor-related gene product that binds to C-kinase, hSRBC, PRKCDBP, SRBC

**Target/Specificity**

It is predicted to not cross-react with other members of the cavin family.

**Reconstitution & Storage**

Long term: -20°C; Short term: +4°C. Avoid repeat freeze-thaw cycles.

**Precautions**

PRKCDBP / CAVIN3 Antibody (Internal) is for research use only and not for use in diagnostic or therapeutic procedures.

**PRKCDBP / CAVIN3 Antibody (Internal) - Protein Information****Name** CAVIN3 ([HGNC:9400](#))**Synonyms** PRKCDBP, SRBC**Function**

Regulates the traffic and/or budding of caveolae (PubMed:<a href="http://www.uniprot.org/citations/19262564" target="\_blank">19262564</a>). Plays a role in caveola formation in a tissue- specific manner. Required for the formation of caveolae in smooth muscle but not in the lung and heart endothelial cells. Regulates the equilibrium between cell surface-associated and cell surface- dissociated caveolae by promoting the rapid release of caveolae from the cell surface. Plays a role in the regulation of the circadian clock. Modulates the

period length and phase of circadian gene expression and also regulates expression and interaction of the core clock components PER1/2 and CRY1/2 (By similarity).

**Cellular Location**

Cytoplasm {ECO:0000250|UniProtKB:Q91VJ2}. Membrane, caveola. Cytoplasm, cytosol {ECO:0000250|UniProtKB:Q91VJ2}. Note=Localizes in the caveolae in a caveolin-dependent manner.

**Tissue Location**

Skeletal muscle, liver, stomach, lung, kidney and heart (at protein level). Strongly expressed in mammary and epithelial cells.

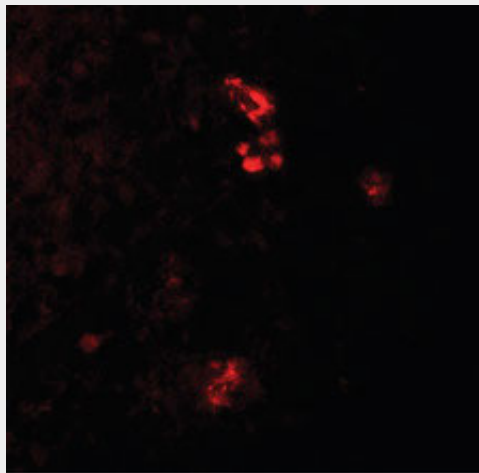
**Volume**

50 µl

**PRKCDBP / CAVIN3 Antibody (Internal) - Protocols**

Provided below are standard protocols that you may find useful for product applications.

- [Western Blot](#)
- [Blocking Peptides](#)
- [Dot Blot](#)
- [Immunohistochemistry](#)
- [Immunofluorescence](#)
- [Immunoprecipitation](#)
- [Flow Cytometry](#)
- [Cell Culture](#)

**PRKCDBP / CAVIN3 Antibody (Internal) - Images**

Immunofluorescence of PRKCDBP in human spleen tissue with PRKCDBP antibody at 20 ug/ml.

**PRKCDBP / CAVIN3 Antibody (Internal) - Background**

Plays a role in the regulation of the circadian clock. Modulates the period length and phase of circadian gene expression and also regulates expression and interaction of the core clock components PER1/2 and CRY1/2. Seems to have an immune potentiation function.

**PRKCDBP / CAVIN3 Antibody (Internal) - References**

Xu X.L.,et al.Cancer Res. 61:7943-7949(2001).  
Taylor T.D.,et al.Nature 440:497-500(2006).  
Mural R.J.,et al.Submitted (SEP-2005) to the EMBL/GenBank/DDBJ databases.  
Olsen J.V.,et al.Cell 127:635-648(2006).  
Cantin G.T.,et al.J. Proteome Res. 7:1346-1351(2008).