

MEPCE Antibody (Internal)
Goat Polyclonal Antibody
Catalog # ALS16077**Specification**

MEPCE Antibody (Internal) - Product Information

Application	WB, IHC-P, E
Primary Accession	O7L2J0
Reactivity	Human, Rat, Monkey
Host	Goat
Clonality	Polyclonal
Calculated MW	74kDa KDa
Dilution	WB~~1:1000 IHC-P~~N/A E~~N/A

MEPCE Antibody (Internal) - Additional Information**Gene ID** 56257**Other Names**

7SK snRNA methylphosphate capping enzyme, MePCE, 2.1.1.-, Bicoid-interacting protein 3 homolog, Bin3 homolog, MEPCE, BCDIN3

Target/Specificity

Human MEPCE.

Reconstitution & Storage

Store at -20°C. Minimize freezing and thawing.

Precautions

MEPCE Antibody (Internal) is for research use only and not for use in diagnostic or therapeutic procedures.

MEPCE Antibody (Internal) - Protein Information**Name** MEPCE {ECO:0000303|PubMed:30559425, ECO:0000312|HGNC:HGNC:20247}**Function**

S-adenosyl-L-methionine-dependent methyltransferase that adds a methylphosphate cap at the 5'-end of 7SK snRNA (7SK RNA), leading to stabilize it (PubMed:17643375, PubMed:19906723, PubMed:30559425). Also has a non-enzymatic function as part of the 7SK RNP complex: the 7SK RNP complex sequesters the positive transcription elongation factor b (P-TEFb) in a large inactive 7SK RNP complex preventing RNA polymerase II phosphorylation and subsequent transcriptional elongation (PubMed:17643375). The 7SK RNP

complex also promotes snRNA gene transcription by RNA polymerase II via interaction with the little elongation complex (LEC) (PubMed:28254838). In the 7SK RNP complex, MEPCE is required to stabilize 7SK RNA and facilitate the assembly of 7SK RNP complex (PubMed:19906723, PubMed:38100593). MEPCE has a non- enzymatic function in the 7SK RNP complex; interaction with LARP7 within the 7SK RNP complex occluding its catalytic center (PubMed:19906723). Also required for stability of U6 snRNAs (PubMed:38100593).

Cellular Location

Nucleus.

Tissue Location

Expressed in chronic myeloid leukemia cells, adrenal gland, brain, cerebellum, kidney, lung, mammary gland and testis (PubMed:12358911). Weakly or not expressed in other tissues (PubMed:12358911).

MEPCE Antibody (Internal) - Protocols

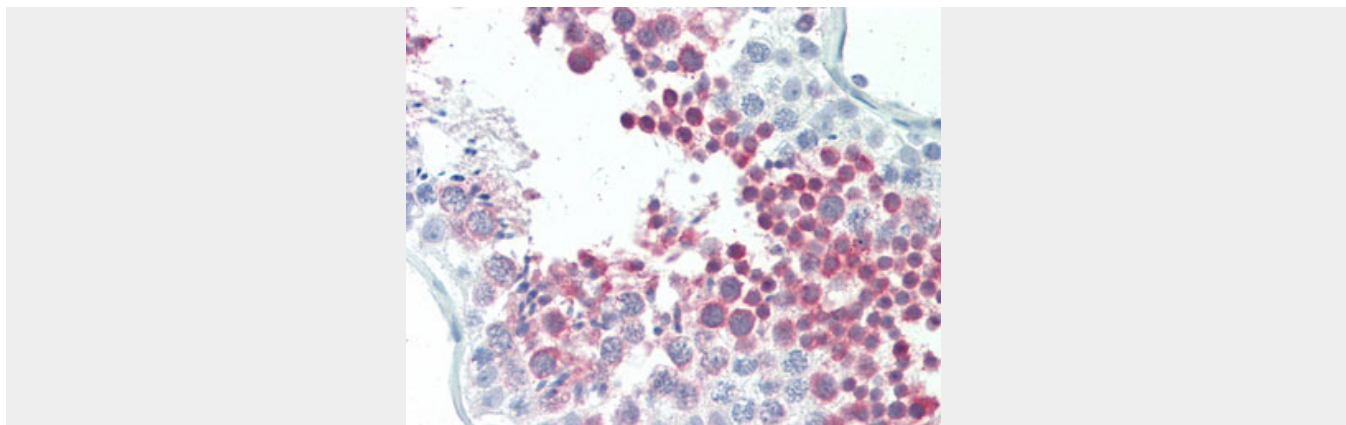
Provided below are standard protocols that you may find useful for product applications.

- [Western Blot](#)
- [Blocking Peptides](#)
- [Dot Blot](#)
- [Immunohistochemistry](#)
- [Immunofluorescence](#)
- [Immunoprecipitation](#)
- [Flow Cytometry](#)
- [Cell Culture](#)

MEPCE Antibody (Internal) - Images



Antibody (1 ug/ml) staining of Rat Testis lysate (35 ug protein in RIPA buffer).



Anti-MEPCE antibody IHC staining of human testis.

MEPCE Antibody (Internal) - Background

S-adenosyl-L-methionine-dependent methyltransferase that adds a methylphosphate cap at the 5'-end of 7SK snRNA, leading to stabilize it.

MEPCE Antibody (Internal) - References

- Ota T., et al. Nat. Genet. 36:40-45(2004).
- Hillier L.W., et al. Nature 424:157-164(2003).
- Scherer S.W., et al. Science 300:767-772(2003).
- Rogers S.A., et al. Br. J. Haematol. 119:112-114(2002).
- Rush J., et al. Nat. Biotechnol. 23:94-101(2005).