

PSMB10 Antibody (Internal)
Goat Polyclonal Antibody
Catalog # ALS16084**Specification**

PSMB10 Antibody (Internal) - Product Information

Application	WB, IHC-P, E
Primary Accession	P40306
Reactivity	Human
Host	Goat
Clonality	Polyclonal
Calculated MW	29kDa KDa
Dilution	WB~~1:1000 IHC-P~~N/A E~~N/A

PSMB10 Antibody (Internal) - Additional Information**Gene ID** 5699**Other Names**

Proteasome subunit beta type-10, 3.4.25.1, Low molecular mass protein 10, Macropain subunit MECL-1, Multicatalytic endopeptidase complex subunit MECL-1, Proteasome MECL-1, Proteasome subunit beta-2i, PSMB10, LMP10, MECL1

Target/Specificity

Human PSMB10.

Reconstitution & Storage

Store at -20°C. Minimize freezing and thawing.

Precautions

PSMB10 Antibody (Internal) is for research use only and not for use in diagnostic or therapeutic procedures.

PSMB10 Antibody (Internal) - Protein Information**Name** PSMB10**Synonyms** LMP10, MECL1**Function**

The proteasome is a multicatalytic proteinase complex which is characterized by its ability to cleave peptides with Arg, Phe, Tyr, Leu, and Glu adjacent to the leaving group at neutral or slightly basic pH. The proteasome has an ATP-dependent proteolytic activity. This subunit is involved in antigen processing to generate class I binding peptides.

Cellular Location

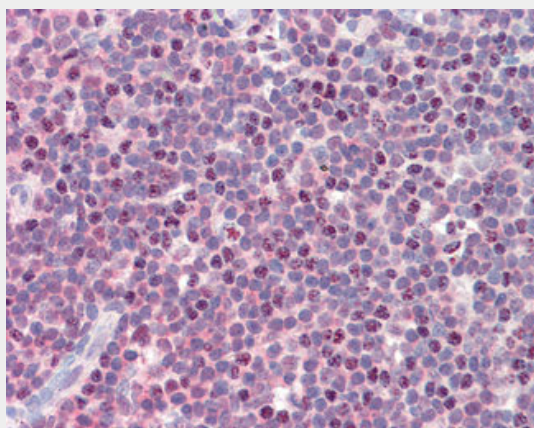
Cytoplasm {ECO:0000255|PROSITE-ProRule:PRU00809}. Nucleus

PSMB10 Antibody (Internal) - Protocols

Provided below are standard protocols that you may find useful for product applications.

- [Western Blot](#)
- [Blocking Peptides](#)
- [Dot Blot](#)
- [Immunohistochemistry](#)
- [Immunofluorescence](#)
- [Immunoprecipitation](#)
- [Flow Cytometry](#)
- [Cell Culture](#)

PSMB10 Antibody (Internal) - Images



Anti-PSMB10 antibody IHC staining of human tonsil.



PSMB10 antibody (0.3 ug/ml) staining of Human Lung lysate (35 ug protein/ml in RIPA buffer).

PSMB10 Antibody (Internal) - Background

The proteasome is a multicatalytic proteinase complex which is characterized by its ability to cleave peptides with Arg, Phe, Tyr, Leu, and Glu adjacent to the leaving group at neutral or slightly basic pH. The proteasome has an ATP-dependent proteolytic activity. This subunit is involved in antigen processing to generate class I binding peptides.

PSMB10 Antibody (Internal) - References

Larsen F.,et al.Hum. Mol. Genet. 2:1589-1595(1993).
Foss G.S.,et al.Biochim. Biophys. Acta 1402:17-28(1998).
Kalnine N.,et al.Submitted (OCT-2004) to the EMBL/GenBank/DDBJ databases.
Ota T.,et al.Nat. Genet. 36:40-45(2004).
Mural R.J.,et al.Submitted (JUL-2005) to the EMBL/GenBank/DDBJ databases.