

SPON2 / MINDIN Antibody (C-Terminus)
Goat Polyclonal Antibody
Catalog # ALS16091**Specification**

SPON2 / MINDIN Antibody (C-Terminus) - Product Information

Application	WB, IHC-P, E
Primary Accession	Q9BUD6
Reactivity	Human, Monkey
Host	Goat
Clonality	Polyclonal
Calculated MW	36kDa KDa
Dilution	WB~~1:1000 IHC-P~~N/A E~~N/A

SPON2 / MINDIN Antibody (C-Terminus) - Additional Information**Gene ID** 10417**Other Names**

Spondin-2, Differentially expressed in cancerous and non-cancerous lung cells 1, DIL-1, Mindin, SPON2, DIL1

Target/Specificity

Human SPON2. Reported variants represent identical protein: NP_036577.1, NP_001121797.1, NP_001185950.1

Reconstitution & Storage

Store at -20°C. Minimize freezing and thawing.

Precautions

SPON2 / MINDIN Antibody (C-Terminus) is for research use only and not for use in diagnostic or therapeutic procedures.

SPON2 / MINDIN Antibody (C-Terminus) - Protein Information**Name** SPON2**Synonyms** DIL1**Function**

Cell adhesion protein that promotes adhesion and outgrowth of hippocampal embryonic neurons. Binds directly to bacteria and their components and functions as an opsonin for macrophage phagocytosis of bacteria. Essential in the initiation of the innate immune response and represents a unique pattern-recognition molecule in the ECM for microbial pathogens (By similarity). Binds bacterial lipopolysaccharide (LPS).

Cellular Location

Secreted, extracellular space, extracellular matrix

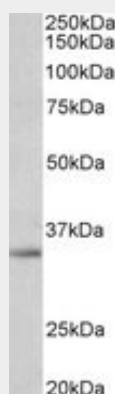
Tissue Location

Expressed in normal lung tissue but not in lung carcinoma cell lines.

SPON2 / MINDIN Antibody (C-Terminus) - Protocols

Provided below are standard protocols that you may find useful for product applications.

- [Western Blot](#)
- [Blocking Peptides](#)
- [Dot Blot](#)
- [Immunohistochemistry](#)
- [Immunofluorescence](#)
- [Immunoprecipitation](#)
- [Flow Cytometry](#)
- [Cell Culture](#)

SPON2 / MINDIN Antibody (C-Terminus) - Images

SPON2 antibody (1 ug/ml) staining of A549 lysate (35 ug protein in RIPA buffer).

SPON2 / MINDIN Antibody (C-Terminus) - Background

Cell adhesion protein that promotes adhesion and outgrowth of hippocampal embryonic neurons. Binds directly to bacteria and their components and functions as an opsonin for macrophage phagocytosis of bacteria. Essential in the initiation of the innate immune response and represents a unique pattern- recognition molecule in the ECM for microbial pathogens (By similarity). Binds bacterial lipopolysaccharide (LPS).

SPON2 / MINDIN Antibody (C-Terminus) - References

Manda R.,et al.Genomics 61:5-14(1999).
Clark H.F.,et al.Genome Res. 13:2265-2270(2003).
Ota T.,et al.Nat. Genet. 36:40-45(2004).
Hillier L.W.,et al.Nature 434:724-731(2005).
Mural R.J.,et al.Submitted (JUL-2005) to the EMBL/GenBank/DDBJ databases.