

MAPK6 / ERK3 Antibody (C-Terminus)
Goat Polyclonal Antibody
Catalog # ALS16104**Specification**

MAPK6 / ERK3 Antibody (C-Terminus) - Product Information

Application	WB, IHC
Primary Accession	Q16659
Reactivity	Human, Mouse, Rabbit, Hamster, Pig, Chicken, Horse, Bovine, Dog
Host	Goat
Clonality	Polyclonal
Calculated MW	83kDa KDa

MAPK6 / ERK3 Antibody (C-Terminus) - Additional Information**Gene ID** 5597**Other Names**

Mitogen-activated protein kinase 6, MAP kinase 6, MAPK 6, 2.7.11.24, Extracellular signal-regulated kinase 3, ERK-3, MAP kinase isoform p97, p97-MAPK, MAPK6, ERK3, PRKM6

Target/Specificity

Human MAPK6 / ERK3. Reported variants represent identical protein (NP_056621.4; NP_081694.1).

Reconstitution & Storage

Store at -20°C. Minimize freezing and thawing.

Precautions

MAPK6 / ERK3 Antibody (C-Terminus) is for research use only and not for use in diagnostic or therapeutic procedures.

MAPK6 / ERK3 Antibody (C-Terminus) - Protein Information**Name** MAPK6**Synonyms** ERK3, PRKM6**Function**

Atypical MAPK protein. Phosphorylates microtubule-associated protein 2 (MAP2) and MAPKAPK5. The precise role of the complex formed with MAPKAPK5 is still unclear, but the complex follows a complex set of phosphorylation events: upon interaction with atypical MAPKAPK5, ERK3/MAPK6 is phosphorylated at Ser-189 and then mediates phosphorylation and activation of MAPKAPK5, which in turn phosphorylates ERK3/MAPK6. May promote entry in the cell cycle (By similarity).

Cellular Location

Cytoplasm. Nucleus. Note=Translocates to the cytoplasm following interaction with MAPKAPK5

Tissue Location

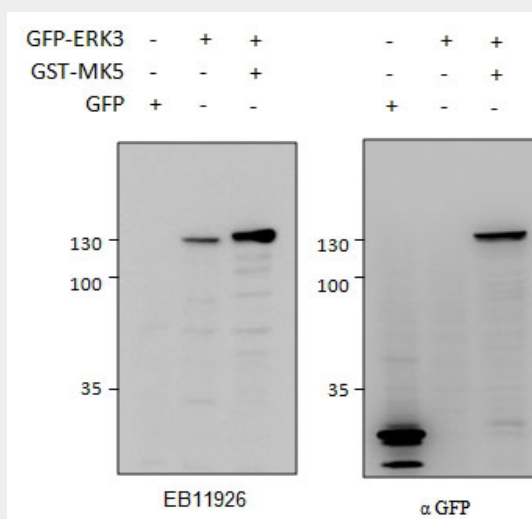
Highest expression in the skeletal muscle, followed by the brain. Also found in heart, placenta, lung, liver, pancreas, kidney and skin fibroblasts

MAPK6 / ERK3 Antibody (C-Terminus) - Protocols

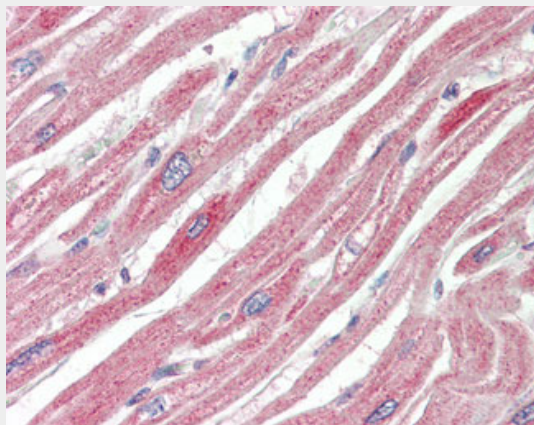
Provided below are standard protocols that you may find useful for product applications.

- [Western Blot](#)
- [Blocking Peptides](#)
- [Dot Blot](#)
- [Immunohistochemistry](#)
- [Immunofluorescence](#)
- [Immunoprecipitation](#)
- [Flow Cytometry](#)
- [Cell Culture](#)

MAPK6 / ERK3 Antibody (C-Terminus) - Images



MAPK6 antibody HEK293 lysate (10 ug protein in RIPA buffer) overexpressing GFP-fused Mouse ERK3...



Anti-MAPK6 / ERK3 antibody IHC staining of human heart.

MAPK6 / ERK3 Antibody (C-Terminus) - Background

Atypical MAPK protein. Phosphorylates microtubule-associated protein 2 (MAP2) and MAPKAPK5. The precise role of the complex formed with MAPKAPK5 is still unclear, but the complex follows a complex set of phosphorylation events: upon interaction with atypical MAPKAPK5, ERK3/MAPK6 is phosphorylated at Ser-189 and then mediates phosphorylation and activation of MAPKAPK5, which in turn phosphorylates ERK3/MAPK6. May promote entry in the cell cycle (By similarity).

MAPK6 / ERK3 Antibody (C-Terminus) - References

Zhu A.X., et al. Mol. Cell. Biol. 14:8202-8211(1994).
Meloche S., et al. Oncogene 13:1575-1579(1996).
Saranath D., et al. Submitted (SEP-2001) to the EMBL/GenBank/DDBJ databases.
Ota T., et al. Nat. Genet. 36:40-45(2004).
Bechtel S., et al. BMC Genomics 8:399-399(2007).