

**POSTN / Periostin Antibody**  
**Rabbit Polyclonal Antibody**  
**Catalog # ALS16118****Specification**

---

**POSTN / Periostin Antibody - Product Information**

Application	IHC
Primary Accession	<a href="#">Q15063</a>
Reactivity	Human, Mouse, Rat, Chicken
Host	Rabbit
Clonality	Polyclonal
Calculated MW	93kDa KDa

**POSTN / Periostin Antibody - Additional Information****Gene ID** 10631**Other Names**

Periostin, PN, Osteoblast-specific factor 2, OSF-2, POSTN, OSF2

**Target/Specificity**

Based on the homology of the immunogen with other species, we expect that this antibody will recognize periostin in most, if not all, species of mammals, birds, amphibians, and fishes. Specific for three periostin bands around ~93 kDa in mouse lung e ...

**Reconstitution & Storage**

Store at -20°C. Aliquot to avoid freeze/thaw cycles. Store undiluted.

**Precautions**

POSTN / Periostin Antibody is for research use only and not for use in diagnostic or therapeutic procedures.

**POSTN / Periostin Antibody - Protein Information****Name** POSTN**Synonyms** OSF2**Function**

Induces cell attachment and spreading and plays a role in cell adhesion (PubMed:<a href="http://www.uniprot.org/citations/12235007" target="\_blank">12235007</a>). Enhances incorporation of BMP1 in the fibronectin matrix of connective tissues, and subsequent proteolytic activation of lysyl oxidase LOX (By similarity).

**Cellular Location**

Golgi apparatus {ECO:0000250|UniProtKB:Q62009}. Secreted Secreted, extracellular space, extracellular matrix Note=Colocalizes with BMP1 in the Golgi {ECO:0000250|UniProtKB:Q62009}

**Tissue Location**

Widely expressed with highest levels in aorta, stomach, lower gastrointestinal tract, placenta, uterus, thyroid tissue and breast. Expressed in the kidney (PubMed:21763681). Expressed in the lung (PubMed:22079858). Up-regulated in epithelial ovarian tumors. Not expressed in normal ovaries. Also highly expressed at the tumor periphery of lung carcinoma tissue but not within the tumor. Overexpressed in breast cancers.

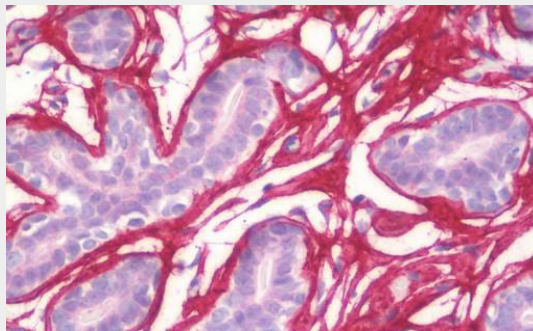
**Volume**

50 µl

**POSTN / Periostin Antibody - Protocols**

Provided below are standard protocols that you may find useful for product applications.

- [Western Blot](#)
- [Blocking Peptides](#)
- [Dot Blot](#)
- [Immunohistochemistry](#)
- [Immunofluorescence](#)
- [Immunoprecipitation](#)
- [Flow Cytometry](#)
- [Cell Culture](#)

**POSTN / Periostin Antibody - Images**

Human Breast: Formalin-Fixed, Paraffin-Embedded (FFPE)

**POSTN / Periostin Antibody - Background**

Enhances incorporation of BMP1 in the fibronectin matrix of connective tissues, and subsequent proteolytic activation of lysyl oxidase LOX (By similarity). Induces cell attachment and spreading and plays a role in cell adhesion. May play a role in extracellular matrix mineralization.

**POSTN / Periostin Antibody - References**

Takeshita S., et al. Biochem. J. 294:271-278(1993).  
Gillan L., et al. Cancer Res. 62:5358-5364(2002).  
Bai Y., et al. Jpn. Clin. Med. 1:13-20(2010).  
Yamada S., et al. Submitted (FEB-2005) to the EMBL/GenBank/DDBJ databases.  
Dunham A., et al. Nature 428:522-528(2004).