

**SERPINB2 / PAI-2 Antibody**  
**Rabbit Polyclonal Antibody**  
**Catalog # ALS16166****Specification**

---

**SERPINB2 / PAI-2 Antibody - Product Information**

Application	<b>WB</b>
Primary Accession	<a href="#">P05120</a>
Reactivity	<b>Human, Monkey</b>
Host	<b>Rabbit</b>
Clonality	<b>Polyclonal</b>
Calculated MW	<b>47kDa KDa</b>

**SERPINB2 / PAI-2 Antibody - Additional Information****Gene ID** 5055**Other Names**

Plasminogen activator inhibitor 2, PAI-2, Monocyte Arg-serpin, Placental plasminogen activator inhibitor, Serpin B2, Urokinase inhibitor, SERPINB2, PAI2, PLANH2

**Target/Specificity**

Reactivity occurs against human PAI-2 protein. A BLAST analysis was used to suggest cross reactivity with PAI-2 proteins from several primates based on 94% homology with the immunizing sequence. Reactivity against homologues from other sources is not ...

**Reconstitution & Storage**

Short term 4°C, long term aliquot and store at -20°C, avoid freeze thaw cycles.

**Precautions**

SERPINB2 / PAI-2 Antibody is for research use only and not for use in diagnostic or therapeutic procedures.

**SERPINB2 / PAI-2 Antibody - Protein Information****Name** SERPINB2**Synonyms** PAI2, PLANH2**Function**

Inhibits urokinase-type plasminogen activator. The monocyte derived PAI-2 is distinct from the endothelial cell-derived PAI-1.

**Cellular Location**

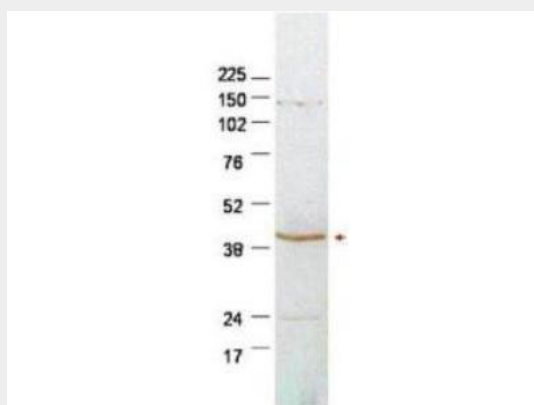
Cytoplasm. Secreted, extracellular space.

## SERPINB2 / PAI-2 Antibody - Protocols

Provided below are standard protocols that you may find useful for product applications.

- [Western Blot](#)
- [Blocking Peptides](#)
- [Dot Blot](#)
- [Immunohistochemistry](#)
- [Immunofluorescence](#)
- [Immunoprecipitation](#)
- [Flow Cytometry](#)
- [Cell Culture](#)

## SERPINB2 / PAI-2 Antibody - Images



Anti-PAI-2 antibody - Western Blot.

## SERPINB2 / PAI-2 Antibody - Background

Inhibits urokinase-type plasminogen activator. The monocyte derived PAI-2 is distinct from the endothelial cell-derived PAI-1.

## SERPINB2 / PAI-2 Antibody - References

- Ye R.D., et al. *J. Biol. Chem.* 262:3718-3725(1987).  
Schleuning W.-D., et al. *Mol. Cell. Biol.* 7:4564-4567(1987).  
Webb A.C., et al. *J. Exp. Med.* 166:77-94(1987).  
Antalis T.M., et al. *Proc. Natl. Acad. Sci. U.S.A.* 85:985-989(1988).  
Ye R.D., et al. *J. Biol. Chem.* 264:5495-5502(1989).