

COX6A1 Antibody
Rabbit Polyclonal Antibody
Catalog # ALS16180**Specification**

COX6A1 Antibody - Product Information

Application	WB, IHC-P, E
Primary Accession	P12074
Reactivity	Human
Host	Rabbit
Clonality	Polyclonal
Calculated MW	12kDa KDa
Dilution	WB~~1:1000 IHC-P~~N/A E~~N/A

COX6A1 Antibody - Additional Information**Gene ID** 1337**Other Names**

Cytochrome c oxidase subunit 6A1, mitochondrial, Cytochrome c oxidase polypeptide VIa-liver, Cytochrome c oxidase subunit VIA-liver, COX VIa-L, COX6A1, COX6AL

Target/Specificity

Human COX6A1

Reconstitution & Storage

Aliquot and store at -20°C or -80°C. Avoid freeze-thaw cycles.

Precautions

COX6A1 Antibody is for research use only and not for use in diagnostic or therapeutic procedures.

COX6A1 Antibody - Protein Information**Name** COX6A1**Synonyms** COX6AL**Function**

Component of the cytochrome c oxidase, the last enzyme in the mitochondrial electron transport chain which drives oxidative phosphorylation. The respiratory chain contains 3 multisubunit complexes succinate dehydrogenase (complex II, CII), ubiquinol- cytochrome c oxidoreductase (cytochrome b-c1 complex, complex III, CIII) and cytochrome c oxidase (complex IV, CIV), that cooperate to transfer electrons derived from NADH and succinate to molecular oxygen, creating an electrochemical gradient over the inner membrane that drives transmembrane transport and the ATP synthase. Cytochrome c oxidase is the component of the respiratory chain that catalyzes the reduction of oxygen to water. Electrons originating from reduced cytochrome c in the

intermembrane space (IMS) are transferred via the dinuclear copper A center (CU(A)) of subunit 2 and heme A of subunit 1 to the active site in subunit 1, a binuclear center (BNC) formed by heme A3 and copper B (CU(B)). The BNC reduces molecular oxygen to 2 water molecules using 4 electrons from cytochrome c in the IMS and 4 protons from the mitochondrial matrix.

Cellular Location

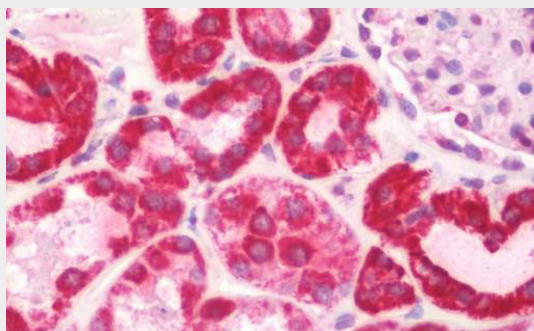
Mitochondrion inner membrane; Single-pass membrane protein

COX6A1 Antibody - Protocols

Provided below are standard protocols that you may find useful for product applications.

- [Western Blot](#)
- [Blocking Peptides](#)
- [Dot Blot](#)
- [Immunohistochemistry](#)
- [Immunofluorescence](#)
- [Immunoprecipitation](#)
- [Flow Cytometry](#)
- [Cell Culture](#)

COX6A1 Antibody - Images



Anti-COX6A1 antibody IHC staining of human kidney.

COX6A1 Antibody - Background

This protein is one of the nuclear-coded polypeptide chains of cytochrome c oxidase, the terminal oxidase in mitochondrial electron transport.

COX6A1 Antibody - References

Ota T., et al. Nat. Genet. 36:40-45(2004).
Scherer S.E., et al. Nature 440:346-351(2006).
Fabrizi G.M., et al. Nucleic Acids Res. 17:6409-6409(1989).
Hochstrasser D.F., et al. Electrophoresis 13:992-1001(1992).