

**JAM2 Antibody (aa1-294)**  
**Rabbit Polyclonal Antibody**  
**Catalog # ALS16197****Specification**

---

**JAM2 Antibody (aa1-294) - Product Information**

Application	WB, IHC-P
Primary Accession	<a href="#">P57087</a>
Reactivity	Human
Host	Rabbit
Clonality	Polyclonal
Calculated MW	33kDa KDa
Dilution	WB~~1:1000 IHC-P~~N/A

**JAM2 Antibody (aa1-294) - Additional Information****Gene ID** 58494**Other Names**

Junctional adhesion molecule B, JAM-B, Junctional adhesion molecule 2, JAM-2, Vascular endothelial junction-associated molecule, VE-JAM, CD322, JAM2, C21orf43, VEJAM

**Target/Specificity**

Human JAM-B / JAM2

**Reconstitution & Storage**

Keep as concentrated solution. Aliquot and store at -20°C or below. Avoid multiple freeze-thaw cycles.

**Precautions**

JAM2 Antibody (aa1-294) is for research use only and not for use in diagnostic or therapeutic procedures.

**JAM2 Antibody (aa1-294) - Protein Information****Name** JAM2 ([HGNC:14686](#))**Function**

Junctional adhesion protein that mediates heterotypic cell- cell interactions with its cognate receptor JAM3 to regulate different cellular processes (PubMed:<a href="http://www.uniprot.org/citations/11590146" target="\_blank">11590146</a>, PubMed:<a href="http://www.uniprot.org/citations/11823489" target="\_blank">11823489</a>, PubMed:<a href="http://www.uniprot.org/citations/24357068" target="\_blank">24357068</a>). Plays a role in homing and mobilization of hematopoietic stem and progenitor cells within the bone marrow (PubMed:<a href="http://www.uniprot.org/citations/24357068" target="\_blank">24357068</a>). At the surface of bone marrow stromal cells, it contributes to the retention of the hematopoietic stem and progenitor cells expressing JAM3 (PubMed:<a

href="http://www.uniprot.org/citations/11590146" target="\_blank">11590146</a>, PubMed:<a href="http://www.uniprot.org/citations/24357068" target="\_blank">24357068</a>). Plays a central role in leukocytes extravasation by facilitating not only transmigration but also tethering and rolling of leukocytes along the endothelium (PubMed:<a href="http://www.uniprot.org/citations/12239159" target="\_blank">12239159</a>). Tethering and rolling of leukocytes are dependent on the binding by JAM2 of the integrin alpha-4/beta-1 (PubMed:<a href="http://www.uniprot.org/citations/12070135" target="\_blank">12070135</a>). Plays a role in spermatogenesis where JAM2 and JAM3, which are respectively expressed by Sertoli and germ cells, mediate an interaction between both cell types and play an essential role in the anchorage of germ cells onto Sertoli cells and the assembly of cell polarity complexes during spermatid differentiation (By similarity). Also functions as an inhibitory somatodendritic cue that prevents the myelination of non-axonal parts of neurons (By similarity). During myogenesis, it is involved in myocyte fusion (By similarity). May also play a role in angiogenesis (By similarity).

### Cellular Location

Cell membrane; Single-pass type I membrane protein. Cell junction. Cell junction, tight junction {ECO:0000250|UniProtKB:Q9JI59}. Note=Localized at tight junctions of both epithelial and endothelial cells (By similarity). Specifically localized within the somatodendritic compartment of neurons and excluded from the axon (By similarity) {ECO:0000250|UniProtKB:Q9JI59}

### Tissue Location

Highly expressed in heart, placenta, lung, foreskin and lymph node (PubMed:10779521, PubMed:10945976). Prominently expressed on high endothelial venules and also present on the endothelia of other vessels (at protein level) (PubMed:10779521, PubMed:10945976). Also expressed in the brain in the caudate nuclei (PubMed:31851307).

### Volume

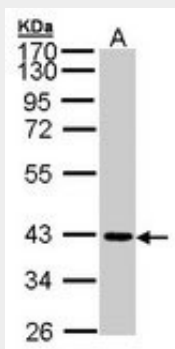
50 µl

## JAM2 Antibody (aa1-294) - Protocols

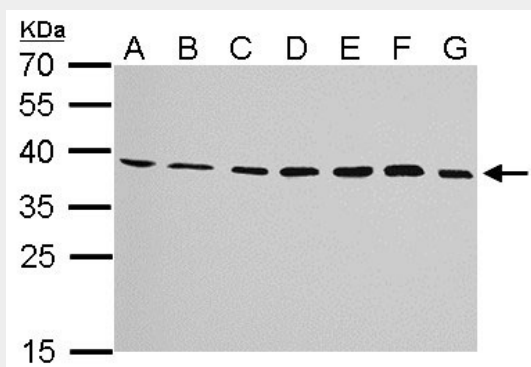
Provided below are standard protocols that you may find useful for product applications.

- [Western Blot](#)
- [Blocking Peptides](#)
- [Dot Blot](#)
- [Immunohistochemistry](#)
- [Immunofluorescence](#)
- [Immunoprecipitation](#)
- [Flow Cytometry](#)
- [Cell Culture](#)

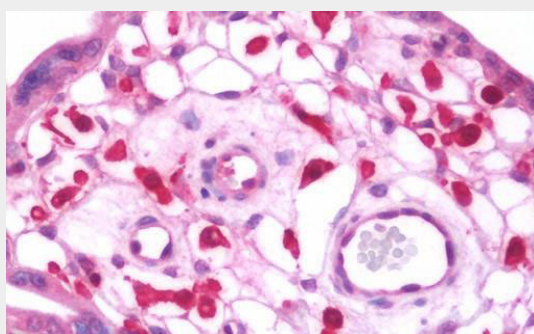
## JAM2 Antibody (aa1-294) - Images



Sample (30 ug of whole cell lysate).



JAM-B antibody detects JAM2 protein by Western blot analysis.



Anti-JAM-B / JAM2 antibody IHC staining of human placenta.

#### **JAM2 Antibody (aa1-294) - Background**

May play a role in the processes of lymphocyte homing to secondary lymphoid organs.

#### **JAM2 Antibody (aa1-294) - References**

- Palmeri D.,et al.J. Biol. Chem. 275:19139-19145(2000).
- Cunningham S.A.,et al.J. Biol. Chem. 275:34750-34756(2000).
- Gardiner K.,et al.Genomics 79:833-843(2002).
- Clark H.F.,et al.Genome Res. 13:2265-2270(2003).
- Ota T.,et al.Nat. Genet. 36:40-45(2004).