

PSCA Antibody (aa41-90)
Rabbit Polyclonal Antibody
Catalog # ALS16242**Specification**

PSCA Antibody (aa41-90) - Product Information

Application	WB
Primary Accession	O43653
Reactivity	Human, Mouse
Host	Rabbit
Clonality	Polyclonal

PSCA Antibody (aa41-90) - Additional Information**Gene ID** 8000**Other Names**

Prostate stem cell antigen, PSCA

Target/Specificity

Human PSCA

Reconstitution & Storage

Store at 4°C short term. Aliquot and store at -20°C long term. Avoid freeze-thaw cycles.

Precautions

PSCA Antibody (aa41-90) is for research use only and not for use in diagnostic or therapeutic procedures.

PSCA Antibody (aa41-90) - Protein Information**Name** PSCA**Function**

May be involved in the regulation of cell proliferation. Has a cell-proliferation inhibition activity in vitro.

Cellular Location

Cell membrane; Lipid-anchor, GPI-anchor

Tissue Location

Highly expressed in prostate (basal, secretory and neuroendocrine epithelium cells). Also found in bladder (transitional epithelium), placenta (trophoblasts), stomach (neuroendocrine cells), colon (neuroendocrine cells) and kidney (collecting ducts) Overexpressed in prostate cancers and expression is correlated with tumor stage, grade and androgen-independence. Highly expressed in prostate cancer bone metastases. Expressed in gastric epithelial cells, mainly in the isthmus (at protein level). Not detected in normal intestinal epithelium (at protein level). Expressed in brain cortex; expression is significantly increased in the front cortex of Alzheimer disease patients.

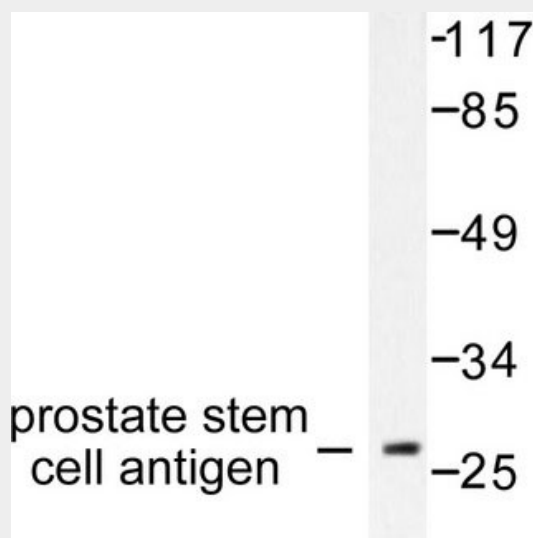
Volume
50 µl

PSCA Antibody (aa41-90) - Protocols

Provided below are standard protocols that you may find useful for product applications.

- [Western Blot](#)
- [Blocking Peptides](#)
- [Dot Blot](#)
- [Immunohistochemistry](#)
- [Immunofluorescence](#)
- [Immunoprecipitation](#)
- [Flow Cytometry](#)
- [Cell Culture](#)

PSCA Antibody (aa41-90) - Images



Western blot of Prostate Stem Cell Antigen (V71) pAb in extracts from HepG2 cells.