

ACTG1 / Gamma Actin Antibody (N-Terminus, clone 2A3)
Mouse Monoclonal Antibody
Catalog # ALS16251**Specification**

ACTG1 / Gamma Actin Antibody (N-Terminus, clone 2A3) - Product Information

Application	WB, IHC
Primary Accession	P63261
Reactivity	Human, Mouse
Host	Mouse
Clonality	Monoclonal
Calculated MW	42kDa KDa

ACTG1 / Gamma Actin Antibody (N-Terminus, clone 2A3) - Additional Information**Gene ID** 71**Other Names**

Actin, cytoplasmic 2, Gamma-actin, Actin, cytoplasmic 2, N-terminally processed, ACTG1, ACTG

Target/Specificity

Clone 2A3 recognizes cytoplasmic actin gamma (known also as ACTG and Gamma Actin), a 41.8 kD cytoskeletal protein. Actins are highly conserved proteins that are involved in cell motility, structure and integrity and are ubiquitously expressed in all ...

Reconstitution & Storage

+4°C or -20°C, Avoid repeated freezing and thawing.

Precautions

ACTG1 / Gamma Actin Antibody (N-Terminus, clone 2A3) is for research use only and not for use in diagnostic or therapeutic procedures.

ACTG1 / Gamma Actin Antibody (N-Terminus, clone 2A3) - Protein Information**Name** ACTG1**Synonyms** ACTG**Function**

Actins are highly conserved proteins that are involved in various types of cell motility and are ubiquitously expressed in all eukaryotic cells. May play a role in the repair of noise-induced stereocilia gaps thereby maintains hearing sensitivity following loud noise damage (By similarity).

Cellular Location

Cytoplasm, cytoskeleton

Volume

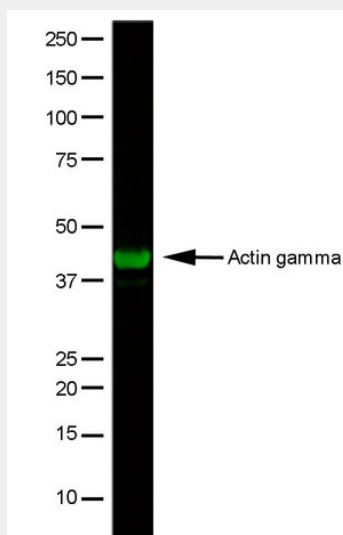
50 µl

ACTG1 / Gamma Actin Antibody (N-Terminus, clone 2A3) - Protocols

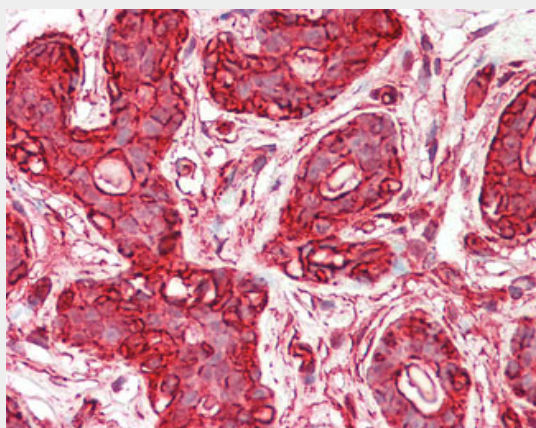
Provided below are standard protocols that you may find useful for product applications.

- [Western Blot](#)
- [Blocking Peptides](#)
- [Dot Blot](#)
- [Immunohistochemistry](#)
- [Immunofluorescence](#)
- [Immunoprecipitation](#)
- [Flow Cytometry](#)
- [Cell Culture](#)

ACTG1 / Gamma Actin Antibody (N-Terminus, clone 2A3) - Images



HeLa whole cell lysate stained with Mouse anti-Human Actin Gamma followed by Rabbit F(ab')2...



Anti-ACTG1 / Gamma Actin antibody IHC staining of human breast.

ACTG1 / Gamma Actin Antibody (N-Terminus, clone 2A3) - Background

Actins are highly conserved proteins that are involved in various types of cell motility and are ubiquitously expressed in all eukaryotic cells.

ACTG1 / Gamma Actin Antibody (N-Terminus, clone 2A3) - References

Erba H.P.,et al.Nucleic Acids Res. 14:5275-5294(1986).
Erba H.P.,et al.Mol. Cell. Biol. 8:1775-1789(1988).
Ota T.,et al.Nat. Genet. 36:40-45(2004).
Kalnine N.,et al.Submitted (OCT-2004) to the EMBL/GenBank/DDBJ databases.
Gevaert K.,et al.Nat. Biotechnol. 21:566-569(2003).