

AHI1 Antibody (aa1-42)
Rabbit Polyclonal Antibody
Catalog # ALS16260**Specification**

AHI1 Antibody (aa1-42) - Product Information

Application	WB, IHC
Primary Accession	Q8N157
Reactivity	Human
Host	Rabbit
Clonality	Polyclonal
Calculated MW	137kDa KDa

AHI1 Antibody (aa1-42) - Additional Information**Gene ID** 54806**Other Names**

Joubertin, Abelson helper integration site 1 protein homolog, AHI-1, AHI1

Target/Specificity

Human AHI1

Reconstitution & Storage

Keep as concentrated solution. Aliquot and store at -20°C or below. Avoid multiple freeze-thaw cycles.

Precautions

AHI1 Antibody (aa1-42) is for research use only and not for use in diagnostic or therapeutic procedures.

AHI1 Antibody (aa1-42) - Protein Information**Name** AHI1**Function**

Involved in vesicle trafficking and required for ciliogenesis, formation of primary non-motile cilium, and recruitment of RAB8A to the basal body of primary cilium. Component of the tectonic-like complex, a complex localized at the transition zone of primary cilia and acting as a barrier that prevents diffusion of transmembrane proteins between the cilia and plasma membranes. Involved in neuronal differentiation. As a positive modulator of classical Wnt signaling, may play a crucial role in ciliary signaling during cerebellum embryonic development (PubMed:21623382).

Cellular Location

Cytoplasm, cytoskeleton, cilium basal body. Cell junction, adherens junction. Cytoplasm, cytoskeleton, microtubule organizing center, centrosome, centriole {ECO:0000250|UniProtKB:Q8K3E5}. Note=In the retinal photoreceptor cell layer, localizes at the

connecting cilium {ECO:0000250|UniProtKB:Q8K3E5}

Tissue Location

Highly expressed in the most primitive normal hematopoietic cells. Expressed in brain, particularly in neurons that give rise to the crossing axons of the corticospinal tract and superior cerebellar peduncles. Expressed in kidney (renal collecting duct cells) (at protein level).

Volume

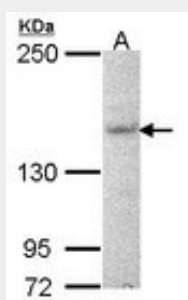
50 μ l

AHI1 Antibody (aa1-42) - Protocols

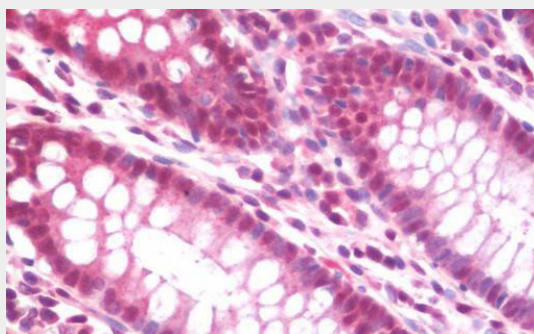
Provided below are standard protocols that you may find useful for product applications.

- [Western Blot](#)
- [Blocking Peptides](#)
- [Dot Blot](#)
- [Immunohistochemistry](#)
- [Immunofluorescence](#)
- [Immunoprecipitation](#)
- [Flow Cytometry](#)
- [Cell Culture](#)

AHI1 Antibody (aa1-42) - Images



Sample (30 ug of whole cell lysate). A: NT2D1. 5% SDS PAGE. AHI1 antibody diluted at 1:1000.



Anti-AHI1 antibody IHC staining of human colon.

AHI1 Antibody (aa1-42) - Background

Component of the tectonic-like complex, a complex localized at the transition zone of primary cilia and acting as a barrier that prevents diffusion of transmembrane proteins between the cilia and plasma membranes.

AHI1 Antibody (aa1-42) - References

Close J.P.,et al.BMC Genomics 5:33-33(2004).
Westin E.H.,et al.Submitted (JUN-2005) to the EMBL/GenBank/DDBJ databases.
Wiemann S.,et al.Genome Res. 11:422-435(2001).
Ota T.,et al.Nat. Genet. 36:40-45(2004).
Mungall A.J.,et al.Nature 425:805-811(2003).