

**ELF3 / ESE1 Antibody (N-Terminus)**  
**Rabbit Polyclonal Antibody**  
**Catalog # ALS16271****Specification**

---

**ELF3 / ESE1 Antibody (N-Terminus) - Product Information**

Application	IHC
Primary Accession	<a href="#">P78545</a>
Reactivity	Human, Monkey
Host	Rabbit
Clonality	Polyclonal
Calculated MW	41kDa KDa

**ELF3 / ESE1 Antibody (N-Terminus) - Additional Information****Gene ID 1999****Other Names**

ETS-related transcription factor Elf-3, E74-like factor 3, Epithelial-restricted with serine box, Epithelium-restricted Ets protein ESX, Epithelium-specific Ets transcription factor 1, ESE-1, ELF3 ([http://www.genenames.org/cgi-bin/gene\\_symbol\\_report?hgnc\\_id=3318](http://www.genenames.org/cgi-bin/gene_symbol_report?hgnc_id=3318))  
HGNC:3318

**Target/Specificity**

N terminal sequence MAATCEISNIFSNYFS and the C terminal sequence SSGWKEEEVLQSRN of the human ESE-1 protein

**Reconstitution & Storage**

Long term: -20°C; Short term: +4°C. Avoid repeat freeze-thaw cycles.

**Precautions**

ELF3 / ESE1 Antibody (N-Terminus) is for research use only and not for use in diagnostic or therapeutic procedures.

**ELF3 / ESE1 Antibody (N-Terminus) - Protein Information**

**Name** ELF3 ([HGNC:3318](#))

**Function**

Transcriptional activator that binds and transactivates ETS sequences containing the consensus nucleotide core sequence GGA[AT]. Acts synergistically with POU2F3 to transactivate the SPRR2A promoter and with RUNX1 to transactivate the ANGPT1 promoter. Also transactivates collagenase, CCL20, CLND7, FLG, KRT8, NOS2, PTGS2, SPRR2B, TGFB2 and TGM3 promoters. Represses KRT4 promoter activity. Involved in mediating vascular inflammation. May play an important role in epithelial cell differentiation and tumorigenesis. May be a critical downstream effector of the ERBB2 signaling pathway. May be associated with mammary gland development and involution. Plays an important role in the regulation of transcription with TATA-less promoters in preimplantation embryos, which is essential in preimplantation development (By similarity).

**Cellular Location**

Cytoplasm. Nucleus {ECO:0000255|PROSITE-ProRule:PRU00237, ECO:0000269|PubMed:10391676, ECO:0000269|PubMed:15169914, ECO:0000269|PubMed:17060315} Note=Localizes to the cytoplasm where it has been shown to transform MCF-12A mammary epithelial cells via a novel cytoplasmic mechanism Also transiently expressed and localized to the nucleus where it induces apoptosis in non-transformed breast epithelial cells MCF-10A and MCF-12A via a transcription-dependent mechanism

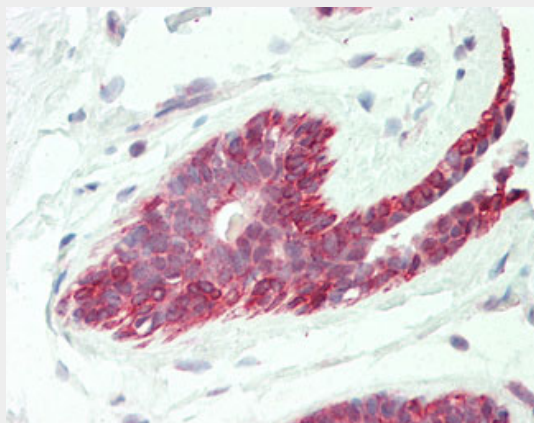
**Tissue Location**

Expressed exclusively in tissues containing a high content of terminally differentiated epithelial cells including mammary gland, colon, trachea, kidney, prostate, uterus, stomach and skin

**ELF3 / ESE1 Antibody (N-Terminus) - Protocols**

Provided below are standard protocols that you may find useful for product applications.

- [Western Blot](#)
- [Blocking Peptides](#)
- [Dot Blot](#)
- [Immunohistochemistry](#)
- [Immunofluorescence](#)
- [Immunoprecipitation](#)
- [Flow Cytometry](#)
- [Cell Culture](#)

**ELF3 / ESE1 Antibody (N-Terminus) - Images**

Anti-ELF3 / ESE1 antibody IHC staining of human breast.

**ELF3 / ESE1 Antibody (N-Terminus) - Background**

Transcriptional activator that binds and transactivates ETS sequences containing the consensus nucleotide core sequence GGA[AT]. Acts synergistically with POU2F3 to transactivate the SPRR2A promoter and with RUNX1 to transactivate the ANGPT1 promoter. Also transactivates collagenase, CCL20, CLND7, FLG, KRT8, NOS2, PTGS2, SPRR2B, TGFBR2 and TGM3 promoters. Represses KRT4 promoter activity. Involved in mediating vascular inflammation. May play an important role in epithelial cell differentiation and tumorigenesis. May be a critical downstream effector of the ERBB2 signaling pathway. May be associated with mammary gland development and involution. Plays an important role in the regulation of transcription with TATA-less promoters in preimplantation embryos, which is essential in preimplantation development (By similarity).

**ELF3 / ESE1 Antibody (N-Terminus) - References**

Oettgen P.,et al.Mol. Cell. Biol. 17:4419-4433(1997).  
Andreoli J.M.,et al.Nucleic Acids Res. 25:4287-4295(1997).  
Chang C.-H.,et al.Oncogene 14:1617-1622(1997).  
Tymms M.J.,et al.Oncogene 15:2449-2462(1997).  
Choi S.-G.,et al.J. Biol. Chem. 273:110-117(1998).