

**Actin Antibody**  
**Rabbit Polyclonal Antibody**  
**Catalog # ALS16307****Specification**

---

**Actin Antibody - Product Information**

Application	IHC, WB
Reactivity	Human, Mouse, Rat, Chicken
Host	Rabbit
Clonality	Polyclonal

**Actin Antibody - Additional Information****Target/Specificity**

This affinity purified antibody is directed against human Actin. The product was affinity purified from antiserum by immunoaffinity purification. Cross-reactivity with Actin from other sources has not been determined.

**Reconstitution & Storage**

Store at -20°C for up to one year.

**Precautions**

Actin Antibody is for research use only and not for use in diagnostic or therapeutic procedures.

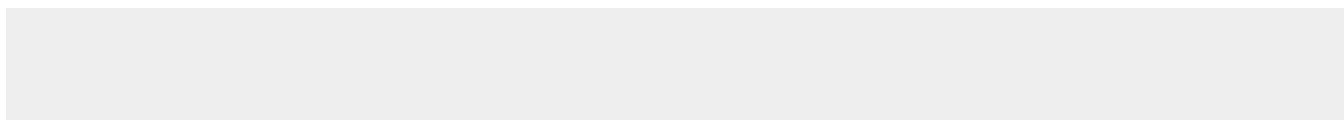
**Actin Antibody - Protein Information****Volume**

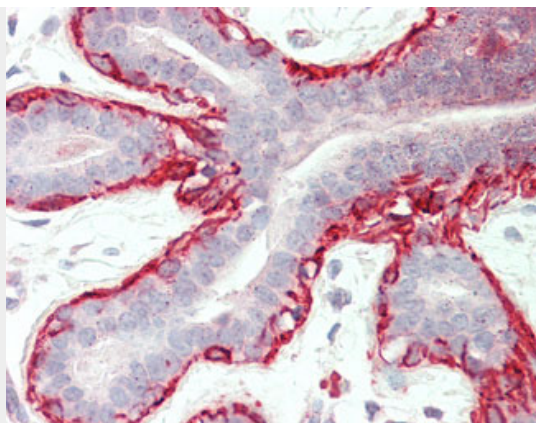
50 µl

**Actin Antibody - Protocols**

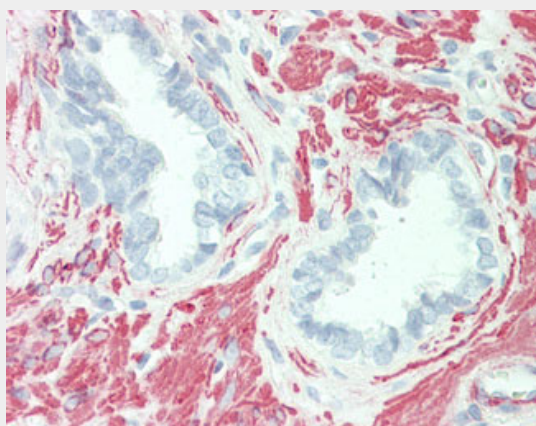
Provided below are standard protocols that you may find useful for product applications.

- [Western Blot](#)
- [Blocking Peptides](#)
- [Dot Blot](#)
- [Immunohistochemistry](#)
- [Immunofluorescence](#)
- [Immunoprecipitation](#)
- [Flow Cytometry](#)
- [Cell Culture](#)

**Actin Antibody - Images**



Human Breast: Formalin-Fixed, Paraffin-Embedded (FFPE)



Anti-Actin antibody IHC staining of human prostate.

