

CAPG Antibody (aa205-217)
Goat Polyclonal Antibody
Catalog # ALS16315**Specification**

CAPG Antibody (aa205-217) - Product Information

Application	IHC, WB
Primary Accession	P40121
Reactivity	Human, Mouse, Rat, Rabbit, Monkey, Pig, Horse, Guinea Pig
Host	Goat
Clonality	Polyclonal
Calculated MW	38kDa KDa

CAPG Antibody (aa205-217) - Additional Information**Gene ID** 822**Other Names**

Macrophage-capping protein, Actin regulatory protein CAP-G, CAPG, AFCP, MCP

Target/Specificity

Human CAPG / MCP. This antibody is expected to recognize isoform 1 (NP_001738.2) only. Reported variants represent identical protein: NP_001243068.1, NP_001738.2.

Reconstitution & Storage

Store at -20°C. Minimize freezing and thawing.

Precautions

CAPG Antibody (aa205-217) is for research use only and not for use in diagnostic or therapeutic procedures.

CAPG Antibody (aa205-217) - Protein Information**Name** CAPG**Synonyms** AFCP, MCP**Function**

Calcium-sensitive protein which reversibly blocks the barbed ends of actin filaments but does not sever preformed actin filaments. May play an important role in macrophage function. May play a role in regulating cytoplasmic and/or nuclear structures through potential interactions with actin. May bind DNA.

Cellular Location

Nucleus. Cytoplasm Melanosome. Cell projection, lamellipodium {ECO:0000250|UniProtKB:P24452}. Cell projection, ruffle {ECO:0000250|UniProtKB:P24452}. Note=In macrophages, may be predominantly cytoplasmic. Nuclear localization was observed in

fibroblasts. In macrophages, present at the membrane-cytoplasm interface. In activated macrophages, concentrated in the ruffles of the leading lamellipodia.
{ECO:0000250|UniProtKB:P24452}

Tissue Location

Macrophages and macrophage-like cells.

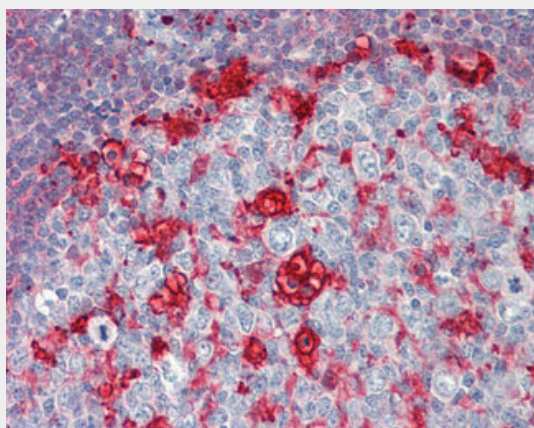
Volume

50 µl

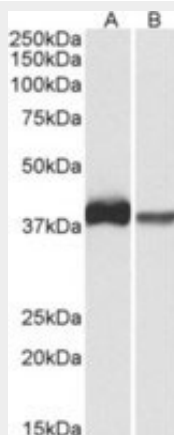
CAPG Antibody (aa205-217) - Protocols

Provided below are standard protocols that you may find useful for product applications.

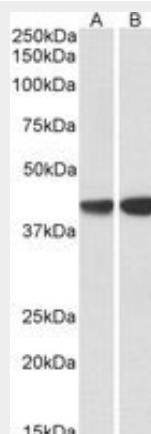
- [Western Blot](#)
- [Blocking Peptides](#)
- [Dot Blot](#)
- [Immunohistochemistry](#)
- [Immunofluorescence](#)
- [Immunoprecipitation](#)
- [Flow Cytometry](#)
- [Cell Culture](#)

CAPG Antibody (aa205-217) - Images

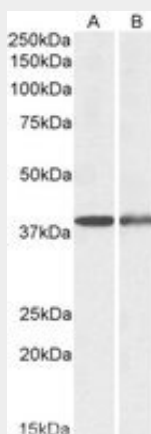
Anti-CAPG / MCP antibody IHC staining of human tonsil.



CAPG Antibody (0.3µg/ml) staining of U937 (A) and Human Spleen (B) lysates (35µg protein in RIPA...



CAPG Antibody (0.3µg/ml) staining of Perihelal Blood Lymphocytes (LS-B11275 lane A), (ALS16315...



CAPG Antibody (0.1µg/ml) staining of Mouse (A) and Rat Spleen (B) lysates (35µg protein in RIPA...

CAPG Antibody (aa205-217) - Background

Calcium-sensitive protein which reversibly blocks the barbed ends of actin filaments but does not sever preformed actin filaments. May play an important role in macrophage function. May play a role in regulating cytoplasmic and/or nuclear structures through potential interactions with actin. May bind DNA.

CAPG Antibody (aa205-217) - References

Dabiri G.A.,et al.J. Biol. Chem. 267:16545-16552(1992).
Suzuki Y.,et al.Submitted (JUL-2006) to the EMBL/GenBank/DDBJ databases.
Hillier L.W.,et al.Nature 434:724-731(2005).
Mural R.J.,et al.Submitted (SEP-2005) to the EMBL/GenBank/DDBJ databases.
Mishra V.S.,et al.Genomics 23:560-565(1994).