

**GNAL Antibody (aa50-100)**  
**Rabbit Polyclonal Antibody**  
**Catalog # ALS16400****Specification**

---

**GNAL Antibody (aa50-100) - Product Information**

Application	IHC, WB
Primary Accession	<a href="#">P38405</a>
Reactivity	Human, Mouse, Rat
Host	Rabbit
Clonality	Polyclonal
Calculated MW	44kDa KDa

**GNAL Antibody (aa50-100) - Additional Information****Gene ID** 2774**Other Names**

Guanine nucleotide-binding protein G(olf) subunit alpha, Adenylate cyclase-stimulating G alpha protein, olfactory type, GNAL

**Target/Specificity**

Human GNAL

**Reconstitution & Storage**

Store at 4°C short term. Aliquot and store at -20°C long term. Avoid freeze-thaw cycles.

**Precautions**

GNAL Antibody (aa50-100) is for research use only and not for use in diagnostic or therapeutic procedures.

**GNAL Antibody (aa50-100) - Protein Information****Name** GNAL**Function**

Guanine nucleotide-binding proteins (G proteins) are involved as modulators or transducers in various transmembrane signaling systems. G(olf) alpha mediates signal transduction within the olfactory neuroepithelium and the basal ganglia. May be involved in some aspect of visual transduction, and in mediating the effect of one or more hormones/neurotransmitters.

**Tissue Location**

Detected in olfactory neuroepithelium, brain, testis, and to a lower extent in retina, lung alveoli, spleen. Trace amounts were seen in kidney, adrenal gland and liver. Found to be expressed in all the insulinomas examined

**Volume**

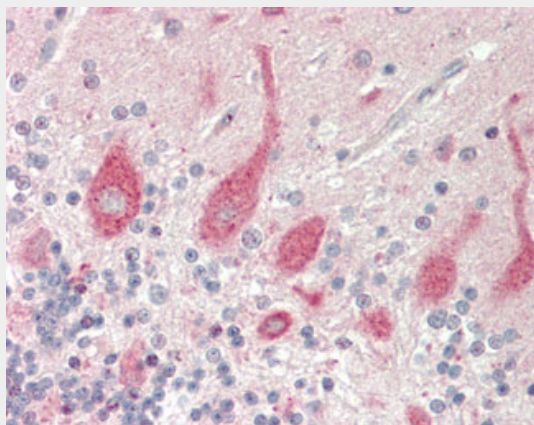
50 µl

## GNAL Antibody (aa50-100) - Protocols

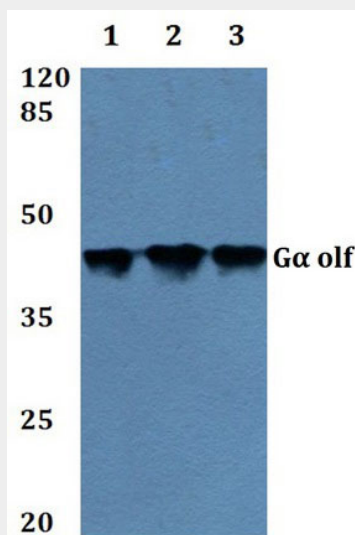
Provided below are standard protocols that you may find useful for product applications.

- [Western Blot](#)
- [Blocking Peptides](#)
- [Dot Blot](#)
- [Immunohistochemistry](#)
- [Immunofluorescence](#)
- [Immunoprecipitation](#)
- [Flow Cytometry](#)
- [Cell Culture](#)

## GNAL Antibody (aa50-100) - Images



Human Brain, Cerebellum: Formalin-Fixed, Paraffin-Embedded (FFPE)



Western blot analysis of GNAL Antibody at a 1:500 dilution.

## GNAL Antibody (aa50-100) - Background

Guanine nucleotide-binding proteins (G proteins) are involved as modulators or transducers in various transmembrane signaling systems. G(olf) alpha mediates signal transduction within the olfactory neuroepithelium and the basal ganglia. May be involved in some aspect of visual

transduction, and in mediating the effect of one or more hormones/neurotransmitters.

#### **GNAL Antibody (aa50-100) - References**

- Zigman J.M.,et al.Endocrinology 133:2508-2514(1993).  
Vuoristo J.T.,et al.Submitted (APR-1996) to the EMBL/GenBank/DDBJ databases.  
Ota T.,et al.Nat. Genet. 36:40-45(2004).  
Nusbaum C.,et al.Nature 437:551-555(2005).  
Mural R.J.,et al.Submitted (SEP-2005) to the EMBL/GenBank/DDBJ databases.