

**NR2F1 / Coup-TF Antibody (aa1-44)**  
**Rabbit Polyclonal Antibody**  
**Catalog # ALS16406**

**Specification**

---

**NR2F1 / Coup-TF Antibody (aa1-44) - Product Information**

Application	WB, IHC-P, ICC
Primary Accession	<a href="#">P10589</a>
Reactivity	Human, Mouse, Rat, Bovine
Host	Rabbit
Clonality	Polyclonal
Calculated MW	46kDa KDa
Dilution	WB~~1:1000 IHC-P~~N/A ICC~~N/A

**NR2F1 / Coup-TF Antibody (aa1-44) - Additional Information**

**Gene ID** 7025

**Other Names**

COUP transcription factor 1, COUP-TF1, COUP transcription factor I, COUP-TF I, Nuclear receptor subfamily 2 group F member 1, V-erbA-related protein 3, EAR-3, NR2F1, EAR3, ERBAL3, TFCOUP1

**Target/Specificity**

Human NR2F1 / Coup-TF

**Reconstitution & Storage**

Keep as concentrated solution. Aliquot and store at -20°C or below. Avoid multiple freeze-thaw cycles.

**Precautions**

NR2F1 / Coup-TF Antibody (aa1-44) is for research use only and not for use in diagnostic or therapeutic procedures.

**NR2F1 / Coup-TF Antibody (aa1-44) - Protein Information**

**Name** NR2F1

**Synonyms** EAR3, ERBAL3, TFCOUP1

**Function**

Coup (chicken ovalbumin upstream promoter) transcription factor binds to the ovalbumin promoter and, in conjunction with another protein (S300-II) stimulates initiation of transcription. Binds to both direct repeats and palindromes of the 5'-AGGTCA-3' motif. Represses transcriptional activity of LHCG.

**Cellular Location**

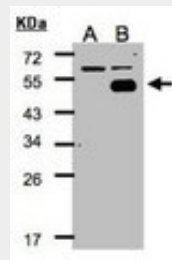
Nucleus.

### NR2F1 / Coup-TF Antibody (aa1-44) - Protocols

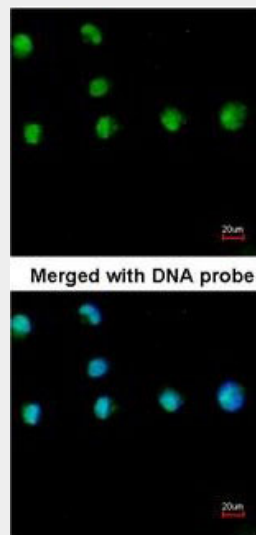
Provided below are standard protocols that you may find useful for product applications.

- [Western Blot](#)
- [Blocking Peptides](#)
- [Dot Blot](#)
- [Immunohistochemistry](#)
- [Immunofluorescence](#)
- [Immunoprecipitation](#)
- [Flow Cytometry](#)
- [Cell Culture](#)

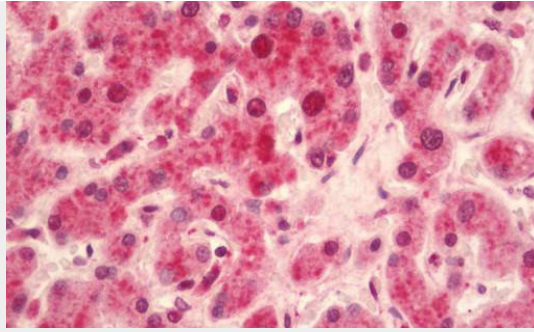
### NR2F1 / Coup-TF Antibody (aa1-44) - Images



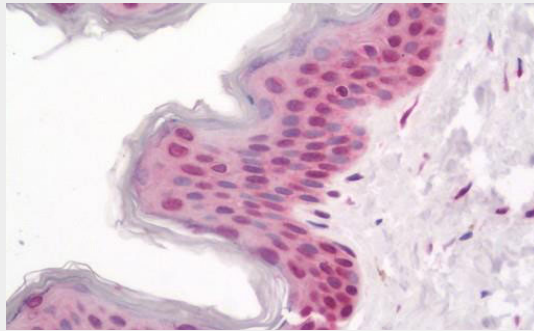
Western blot of NR2F1 expression in transfected 293T cell line by NR2F1 polyclonal antibody.



Immunofluorescence of paraformaldehyde-fixed HeLa using COUP TF1 antibody at 1:200 dilution.



Human Liver: Formalin-Fixed, Paraffin-Embedded (FFPE)



Human Skin: Formalin-Fixed, Paraffin-Embedded (FFPE)

#### **NR2F1 / Coup-TF Antibody (aa1-44) - Background**

Coup (chicken ovalbumin upstream promoter) transcription factor binds to the ovalbumin promoter and, in conjunction with another protein (S300-II) stimulates initiation of transcription. Binds to both direct repeats and palindromes of the 5'-AGGTCA-3' motif. Represses transcriptional activity of LHCG.

#### **NR2F1 / Coup-TF Antibody (aa1-44) - References**

- Wang L.-H., et al. Nature 340:163-166(1989).
- Miyajima N., et al. Nucleic Acids Res. 16:11057-11074(1988).
- Dressel U., et al. Mol. Cell. Biol. 19:3383-3394(1999).
- Zhang Y., et al. J. Biol. Chem. 275:2763-2770(2000).
- Zhang Y., et al. Mol. Endocrinol. 15:1891-1905(2001).