

SHBG Antibody (Internal)
Rabbit Polyclonal Antibody
Catalog # ALS16425**Specification**

SHBG Antibody (Internal) - Product Information

Application	IF
Primary Accession	P04278
Reactivity	Human, Mouse, Rat
Host	Rabbit
Clonality	Polyclonal
Calculated MW	44kDa KDa

SHBG Antibody (Internal) - Additional Information**Gene ID** 6462**Other Names**

Sex hormone-binding globulin, SHBG, Sex steroid-binding protein, SBP, Testis-specific androgen-binding protein, ABP, Testosterone-estradiol-binding globulin, TeBG, Testosterone-estrogen-binding globulin, SHBG

Target/Specificity

SHBG antibody is human, mouse, and rat reactive. At least three isoforms of SHBG are known to exist; this antibody will detect all three isoforms.

Reconstitution & Storage

Long term: -20°C; Short term: +4°C. Avoid repeat freeze-thaw cycles.

Precautions

SHBG Antibody (Internal) is for research use only and not for use in diagnostic or therapeutic procedures.

SHBG Antibody (Internal) - Protein Information**Name** SHBG ([HGNC:10839](#))**Function**

Functions as an androgen transport protein, but may also be involved in receptor mediated processes. Each dimer binds one molecule of steroid. Specific for 5-alpha-dihydrotestosterone, testosterone, and 17-beta-estradiol. Regulates the plasma metabolic clearance rate of steroid hormones by controlling their plasma concentration.

Cellular Location

Secreted. Note=In testis, it is synthesized by the Sertoli cells, secreted into the lumen of the seminiferous tubule and transported to the epididymis.

Tissue Location

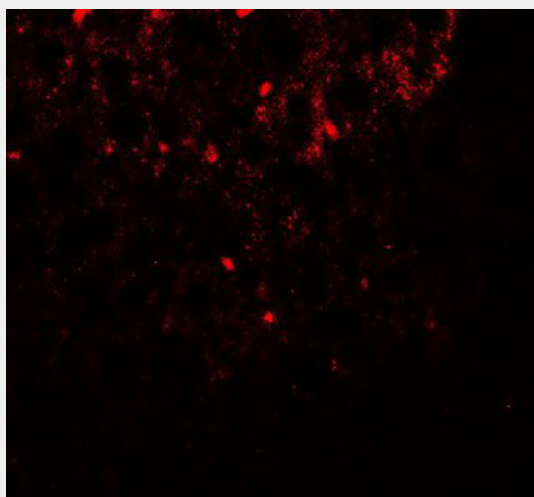
Isoform 1 and isoform 2 are present in liver and testis

SHBG Antibody (Internal) - Protocols

Provided below are standard protocols that you may find useful for product applications.

- [Western Blot](#)
- [Blocking Peptides](#)
- [Dot Blot](#)
- [Immunohistochemistry](#)
- [Immunofluorescence](#)
- [Immunoprecipitation](#)
- [Flow Cytometry](#)
- [Cell Culture](#)

SHBG Antibody (Internal) - Images



Immunofluorescence of SHBG in mouse liver tissue with SHBG antibody at 20 ug/ml.

SHBG Antibody (Internal) - Background

Functions as an androgen transport protein, but may also be involved in receptor mediated processes. Each dimer binds one molecule of steroid. Specific for 5-alpha-dihydrotestosterone, testosterone, and 17-beta-estradiol. Regulates the plasma metabolic clearance rate of steroid hormones by controlling their plasma concentration.

SHBG Antibody (Internal) - References

Gershagen S.,et al.Nucleic Acids Res. 17:9245-9258(1989).
Hammond G.L.,et al.Mol. Endocrinol. 3:1869-1876(1989).
Jin P.,et al.Genomics 83:566-571(2004).
Zody M.C.,et al.Nature 440:1045-1049(2006).
Hammond G.L.,et al.FEBS Lett. 215:100-104(1987).