

ERP29 Antibody
Rabbit Polyclonal Antibody
Catalog # ALS16467**Specification**

ERP29 Antibody - Product InformationApplication
Primary Accession
ReactivityHost
Clonality
Calculated MW**IHC**
[P30040](#)
**Human, Mouse, Rat, Hamster, Bovine,
Guinea Pig, Dog**
Rabbit
Polyclonal
29kDa KDa**ERP29 Antibody - Additional Information****Gene ID** 10961**Other Names**

Endoplasmic reticulum resident protein 29, ERp29, Endoplasmic reticulum resident protein 28, ERp28, Endoplasmic reticulum resident protein 31, ERp31, ERP29, C12orf8, ERP28

Target/Specificity

Human ERP29

Reconstitution & Storage

Aliquot and store at -20°C or -80°C. Avoid freeze-thaw cycles.

Precautions

ERP29 Antibody is for research use only and not for use in diagnostic or therapeutic procedures.

ERP29 Antibody - Protein Information**Name** ERP29**Synonyms** C12orf8, ERP28**Function**

Does not seem to be a disulfide isomerase. Plays an important role in the processing of secretory proteins within the endoplasmic reticulum (ER), possibly by participating in the folding of proteins in the ER.

Cellular Location

Endoplasmic reticulum lumen. Melanosome. Note=Identified by mass spectrometry in melanosome fractions from stage I to stage IV

Tissue Location

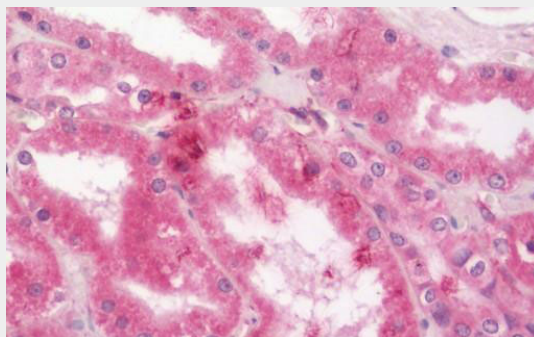
Ubiquitous. Mostly expressed in secretory tissues.

ERP29 Antibody - Protocols

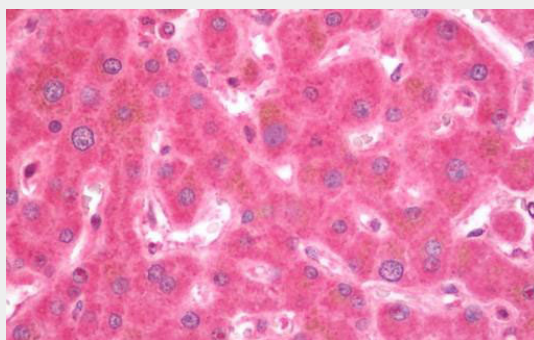
Provided below are standard protocols that you may find useful for product applications.

- [Western Blot](#)
- [Blocking Peptides](#)
- [Dot Blot](#)
- [Immunohistochemistry](#)
- [Immunofluorescence](#)
- [Immunoprecipitation](#)
- [Flow Cytometry](#)
- [Cell Culture](#)

ERP29 Antibody - Images



Human Kidney: Formalin-Fixed, Paraffin-Embedded (FFPE)



Human Liver: Formalin-Fixed, Paraffin-Embedded (FFPE)

ERP29 Antibody - Background

Does not seem to be a disulfide isomerase. Plays an important role in the processing of secretory proteins within the endoplasmic reticulum (ER), possibly by participating in the folding of proteins in the ER.

ERP29 Antibody - References

- Ferrari D.M., et al. Eur. J. Biochem. 255:570-579(1998).
Hillier L., et al. Submitted (MAR-2000) to the EMBL/GenBank/DDBJ databases.
Ebert L., et al. Submitted (JUN-2004) to the EMBL/GenBank/DDBJ databases.
Scherer S.E., et al. Nature 440:346-351(2006).
Hughes G.J., et al. Electrophoresis 14:1216-1222(1993).

