

**MAP1S Antibody**  
**Rabbit Polyclonal Antibody**  
**Catalog # ALS16470****Specification**

---

**MAP1S Antibody - Product Information**

Application	WB, IHC-P, E
Primary Accession	<a href="#">Q66K74</a>
Reactivity	Human
Host	Rabbit
Clonality	Polyclonal
Calculated MW	112kDa KDa
Dilution	WB~~1:1000 IHC-P~~N/A E~~N/A

**MAP1S Antibody - Additional Information****Gene ID** 55201**Other Names**

Microtubule-associated protein 1S, MAP-1S, BPY2-interacting protein 1, Microtubule-associated protein 8, Variable charge Y chromosome 2-interacting protein 1, VCY2-interacting protein 1, VCY2IP-1, MAP1S heavy chain, MAP1S light chain, MAP1S, BPY2IP1, C19orf5, MAP8, VCY2IP1

**Target/Specificity**

Human MAP1S

**Reconstitution & Storage**

Aliquot and store at -20°C or -80°C. Avoid freeze-thaw cycles.

**Precautions**

MAP1S Antibody is for research use only and not for use in diagnostic or therapeutic procedures.

**MAP1S Antibody - Protein Information****Name** MAP1S**Synonyms** BPY2IP1, C19orf5, MAP8, VCY2IP1**Function**

Microtubule-associated protein that mediates aggregation of mitochondria resulting in cell death and genomic destruction (MAGD). Plays a role in anchoring the microtubule organizing center to the centrosomes. Binds to DNA. Plays a role in apoptosis. Involved in the formation of microtubule bundles (By similarity).

**Cellular Location**

Nucleus. Cytoplasm, cytosol. Cytoplasm, cytoskeleton. Cytoplasm, cytoskeleton, spindle.

Note=Detected in filopodia-like protrusions and synapses (By similarity). Detected in perinuclear punctate network corresponding to mitochondrial aggregates and in the nucleus in cells exhibiting apoptosis. Associated specifically with microtubules stabilized by paclitaxel and colocalizes with RASSF1 isoform A. In interphase cells, shows a diffuse cytoplasmic staining with partial localization to the microtubules. During the different stages of mitosis detected at the spindle microtubules.

#### **Tissue Location**

Expressed in neurons (at protein level). Expressed in spermatocytes, spermatids and spermatozoa. Expressed in the cerebral cortex. Highly expressed in testis. Moderately expressed in the brain, colon, heart, kidney, liver, lung, placenta, small intestine, spleen and stomach. Weakly expressed in muscle.

#### **MAP1S Antibody - Protocols**

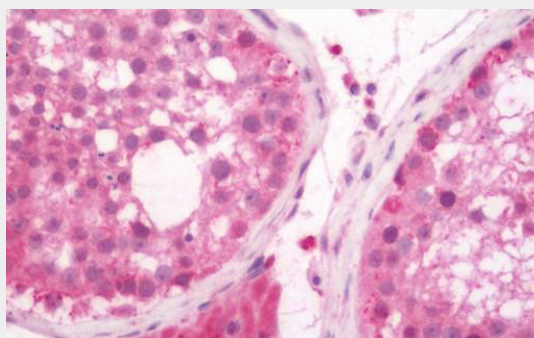
Provided below are standard protocols that you may find useful for product applications.

- [Western Blot](#)
- [Blocking Peptides](#)
- [Dot Blot](#)
- [Immunohistochemistry](#)
- [Immunofluorescence](#)
- [Immunoprecipitation](#)
- [Flow Cytometry](#)
- [Cell Culture](#)

#### **MAP1S Antibody - Images**



Human Kidney: Formalin-Fixed, Paraffin-Embedded (FFPE)



Human Testis: Formalin-Fixed, Paraffin-Embedded (FFPE)

#### **MAP1S Antibody - Background**

Microtubule-associated protein that mediates aggregation of mitochondria resulting in cell death and genomic destruction (MAGD). Plays a role in anchoring the microtubule organizing center to the centrosomes. Binds to DNA. Plays a role in apoptosis. Involved in the formation of microtubule bundles (By similarity).

#### **MAP1S Antibody - References**

Wong E.Y.,et al.Biol. Reprod. 70:775-784(2004).  
Ding J.,et al.Biochem. Biophys. Res. Commun. 339:172-179(2006).  
Ota T.,et al.Nat. Genet. 36:40-45(2004).  
Bechtel S.,et al.BMC Genomics 8:399-399(2007).  
Grimwood J.,et al.Nature 428:529-535(2004).